

928

INTERNATIONAL

NEW, USED, REBUILT...WE HAVE IT ALL... BOOKS AND ACCESSORIES

PERFORMANCE PARTS BELTS LUBRICATION FILTERS HEADS

VALVES CAMS GASKETS EXHAUST FUEL TANKS PUMPS

COOLING SYSTEM CLUTCHES ENGINES TRANSMISSIONS

SUSPENSIONS STEERING REAR AXLES WHEELS BRAKES

SHIFTER TORQUE TUBE BODY AND TRIM SUNROOF

INSIGNIA DOORS LOCKS GLASS MIRRORS

INTERIOR AC AND HEATING RADIOS IGNITION

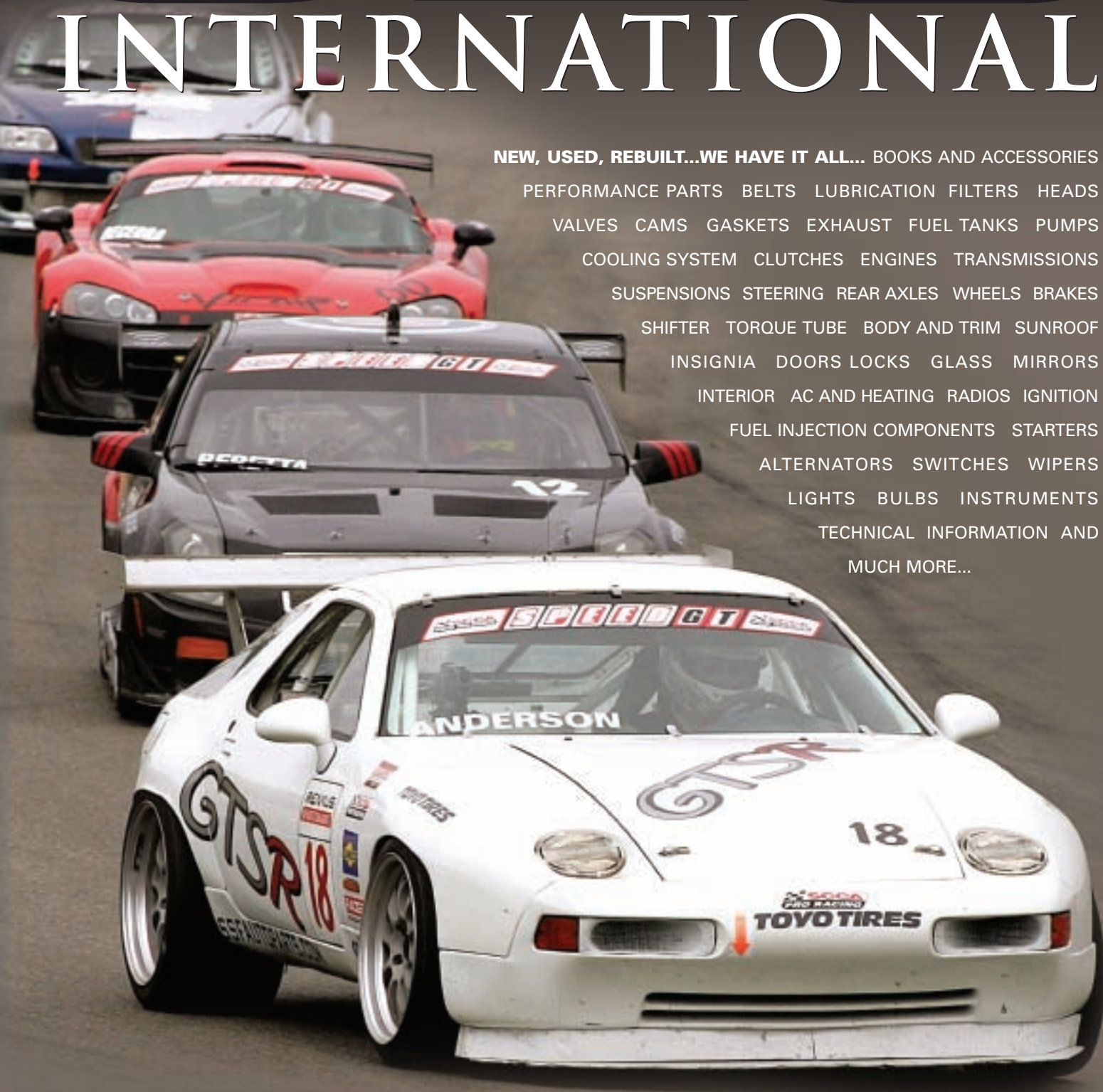
FUEL INJECTION COMPONENTS STARTERS

ALTERNATORS SWITCHES WIPERS

LIGHTS BULBS INSTRUMENTS

TECHNICAL INFORMATION AND

MUCH MORE...



As a licensed automobile dismantler, over 500 wrecked or damaged 928s have been legally junked and the parts recycled in the past two decades. Our database lists some 48,000 customer contacts which include Porsche dealers, independent repair shops, owners, and enthusiasts all over the world. 928 International is a solid, financially secure business which you can count on year after year. We warranty all our products, including the industry-leading one year warranty on all used parts. The current staff at 928 International numbers eight, with an average length of service of over 15 years! Our policy of treating customers honestly and fairly is reflected in our employee relations as well; high levels of employee turnover is one indicator of a less than healthy business.



The annual Sharktoberfest show sponsored in conjunction with the SoCal 928 Owners Club has become a “must attend” event for a large number of 928 owners, with over 200 participating in the three day event. Held in late October, owners drive or fly in from points all over the world. Seeing over 140 different 928s in one place is truly something memorable, but the camaraderie of the people is what makes it so special. All are welcome, be it a ‘78 “project” car or a pristine low mileage GTS, race car or daily driver—we appreciate each one and share the passion.



SHARKTOBERFEST—The Ultimate Gathering of 928 Owners.

Saturday has featured informative tech sessions and a free catered barbecue luncheon at our Anaheim, California warehouse, with ample time scheduled to socialize and view the cars. Mark Anderson, founder and owner of 928 International, remains deeply committed to the 928. He has built and driven for many many years the fastest 928 road racing car, competing professionally in the Speed GT series against the best of the factory racing teams. His “shop truck,” appropriately enough, is a 928 S4 (albeit customized into a pickup truck). As he says, when running around on errands moving parts, he would rather drive a 928 than anything else.

Mark’s hands-on management style typically has him at work first in the morning, and he is generally the last to leave at night. Despite the numerous demands of running a multimillion dollar business, what he enjoys most is talking with customers, sharing his vast store of 928 knowledge, and helping them get the correct parts to solve their problems. All of us who work here share that passion for the 928, recognizing what a truly awesome machine Porsche created and first shared with the world in 1978. This catalogue is but a partial listing of some of the most commonly needed parts, but we have nearly everything new, used or rebuilt.

Simply call and tell us what you are looking for. Our west coast location makes it possible for us to offer same day shipping and overnight delivery to customers who might call as late as 7 pm EST. We are somewhat unique in the Porsche parts business, and certainly not the average “click and mortar” store on the internet. What sets us apart? We inventory nearly all the commonly needed 928 parts; in addition, we only charge customer credit cards on the ship date. Our size, experience, and huge customer base allow us to buy and inventory parts while many others simply take orders then attempt to find the parts. Our inventory of rebuilt, used, and new parts is stored inside our warehouse with over 11,000 square feet of available storage space.

We at 928 International are dedicated to providing the highest quality parts at reasonable prices. We provide fair and competitive pricing for exceptional service, filling our customer’s orders with speed and accuracy. It is our objective to be your best source of parts and information for the 928 Porsche.

Cover photography by Joe Hayashibara

Table of Contents

ABOUT US	02
BUYING ONLINE	04
BOOKS-VIDEOS-TSHIRTS	05
A BRIEF HISTORY	06
WHEELS AND TIRES	08
ACCESSORIES	10
CONTENT A	
MECHANICAL COMPONENTS	11
ORDERING INFORMATION	29
OPTION CODES	30
ORDER FORM	32
CONTENT B	
RESTORATION COMPONENTS	39
PERFORMANCE COMPONENTS	56
NEW PRODUCTS	57
WHAT OUR CUSTOMERS HAVE TO SAY ABOUT US	58



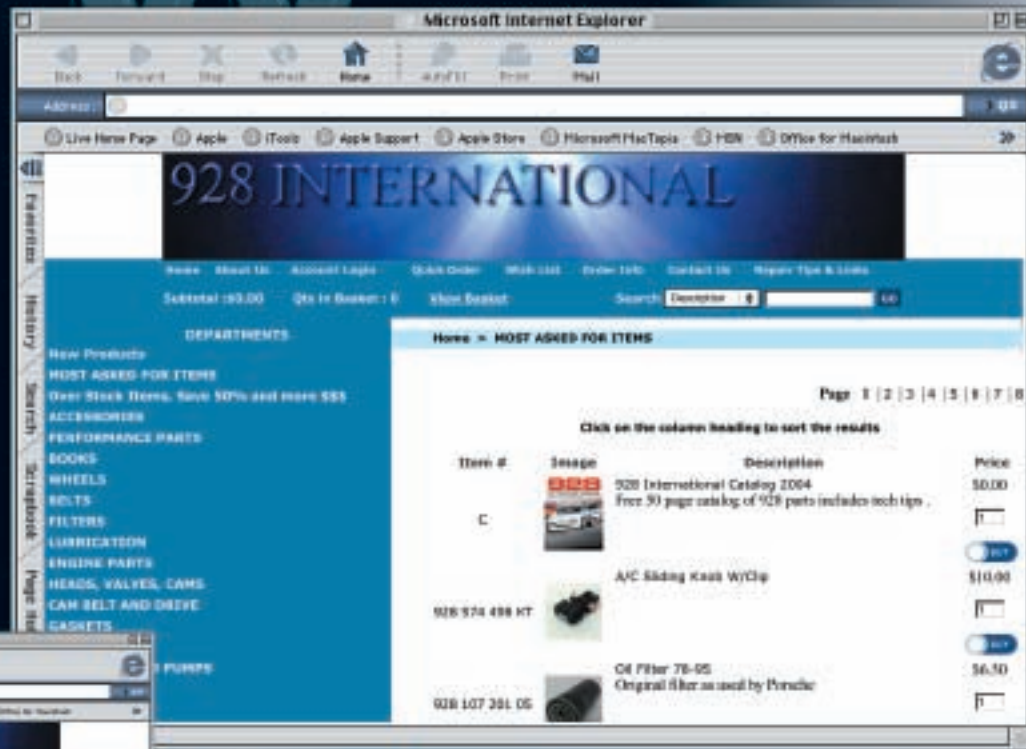
2900 East Miraloma Avenue D
 Anaheim, California 92806
 Telephone: 714/632-9288
 Facsimile: 714/632-9328
 E-mail: mr928@928intl.com
 http://www.928intl.com

2007

SHOP ONLINE

HTTP://WWW.928INTL.COM

Unlike Internet drop shippers, we inventory nearly all the new parts in this catalog. 16 years experience selling 928 parts allows us to purchase in bulk, anticipate your parts needs, and offer same day shipping.



Fuse and Relay Chart '87-88



Speed Channel and POC



The Bosch Fuel Injection Book



Performance Portfolio



928 Takes on the Competition.



928 Owners Manuals



T-Shirt Detail



928 International T-Shirt

Bosch	Bosch Fuel Injection Book	\$35.00
Performance	Performance Portfolio 928 Comparisons	\$19.95
Porsche	Porsche 928 Takes On The Comp	\$19.95
Wkd 467 621	1978 Owner's Manual	\$48.00
Wkd 468 321	1979 Owner's Manual	\$48.00
Wkd 468 921	1980 Owner's Manual	\$42.00
Wkd 469 921	1981 Owner's Manual	\$38.00
Wkd 470 720	1982 928S Owner's Manual	NLA
Wkd 471 821	1983 928S Owner's Manual	NLA
Wkd 472 621	1984 928S Owner's Manual	\$48.00
Wkd 473 421	1985 928S Owner's Manual	NLA
Wkd 928 021 86	1986 928S Owner's Manual	\$48.00
Wkd 928 021 87	1987 928 S4 Owner's Manual	\$48.00
Wkd 928 021 88	1988 928 S4 Owner's Manual	\$38.00
Wkd 928 021 89	1989 928S4 Owner's Manual	\$48.00
Wkd 928 021 90	1990 928S4 Owner's Manual	\$48.00
Wkd 928 021 91	1991 928S4 Owner's Manual	\$48.00
Wkd 928 021 93	1993 928 GTS Owner's Manual	\$48.00

VIDEO TAPES AND CDs

Speedvision1s	Speed Channel Laguna Seca 2000 Vhs	\$12.00
Speedvision1s2	Speed Channel GT 2004 Infineon	\$12.00
Speedvision1v	Speed Channel Las Vegas 2000 Vhs	\$12.00
Speedvision1poc	Speed Channel POC 3 Hour Enduro 2000 Vhs	\$12.00

T-SHIRTS

T Large	T-Shirt With Blue 928 on Back	\$15.00
T Medium	T-Shirt With Blue 928 on Back	\$15.00
T Small	T-Shirt With Blue 928 on Back	\$15.00
T XL	T-Shirt With Blue 928 on Back	\$15.00
T XXL	T-Shirt With Blue 928 on Back	\$15.00

CD 1—This CD contains in-car coverage of several races in our 928 racer. The sounds alone are worth the price. It includes coverage of the 1999 Speed channel race at Laguna Seca and the PCA club race at Road America

Speed Channel World's Challenge from Laguna Seca—This is the first in a series of 4 Speed channel World Challenge races with our 928 race car. In this race we qualified behind Derek Bell and just missed his spectacular accident. We also got pushed off the track by a Corvette but returned to a 10th place finish. The announcers even commented on how unusual it was to see a 928 on the track.

Speed Channel Worlds Challenge from Las Vegas—This tape features the Speed Channel World Challenge GT Race at Las Vegas Speedway and include some interesting footage of a 928 recovering a spin at over 160 miles an hour.

A BRIEF HISTORY

Porsche debuted its first true luxury car at the Geneva "Salon de l'Automobile" in March 1977. Shortly after, it was voted European Car of the Year. U.S. deliveries began later that year, just in time for model year 1978.

American Design chief Anatole Lapine came up with a futuristic look that caused quite a stir at the time, but one that has endured and can still turn heads today.

Efficiency characterized this new engine with a displacement of 4474 cubic centimeters, bore and stroke measuring 95 x 78.9 mm. No pushrods here, but a single overhead camshaft per cylinder, driven by a belt. It was not, once and for all, as some people still believe, an adaptation of the 4.5L Mercedes engine.

Porsche's sales brochure described the 928 as "a sleek grand touring machine that combines

exceptional roadholding and performance with luxurious accommodations for four passengers. It could accelerate from 0 to 60 mph in 7.7 seconds with a top speed of 144 mph."

During 1982, the original 4.5L European version was discontinued. That left only the 4.7L S model available which finally reached America in 1983. The engine had a 9.3:1 compression with horse power output up to 234

at 5500 rpm. In addition, the 928S offered true luxury with accommodations such as driver's power seat, leather option, and automatic climate control.

Only Europeans were treated to the S2 in 1984, featuring Bosch's new LH-Jetronic electronic injection, a 10.4:1 compression, 310 bhp and 295 ft/lbs of torque. Top speed was now 158. Even better was the arrival of ABS.

Stateside, ABS would not become standard equipment until 1986. It made possible braking this rather heavy car from 70 mph in just 175 feet.

But an even better car was on the way for 1987—the 928 S4. Horse power jumped to 316 at 6000 rpm, torque to 317 ft/lbs at 3000 rpm. A revised engine featured new cylinder heads and larger valves, new intake with

twin resonance chambers, a revised cooling system, and ABS with a shorter travel booster and larger front piston calipers. Aerodynamic improvements included such items as flush mounted fog and driving lights, a new chin spoiler and rear wing type spoiler, deeper rockers and a bounded windshield, just to name a few!

Then came the 928 GT. Sprinting from

0-60 mph in a remarkable 5.5 seconds, the GT had a top speed of over 170 mph. The ABS brakes, 32-valve 5.0 liter dohc V8, and crisp-shifting 5-speed manual or responsive 4-speed automatic with limited slip differential made this car the most refined Grand Touring car ever produced by Porsche. But luxury came at a base price of \$77,000, topping out at up to \$100,000, if you chose the more

extravagant options such as custom-colored leather interior and matched-to-sample exterior paint.

Last, but not least was the 928 GTS. It evolved again with a bit more refinement, a bigger 5.4-liter, 32 valve V8 with 4 valves per cylinder and even better handling, ride and brakes—if that was possible. The last 928, and possibly the best one of all.



JOHN PIRTLE—1988 928 S4



JOHN KRAWCZYK—1979 928



KEITH WIDOM—1982 928



CHUCK ZACHMAN—1995 928 GTS



TOM MOORE—1987 928 S4



ANDY EVANGELIDIS—1991 928 GT



THEO JENNISKENS—1988 928 S4 (The Netherlands)



MARK JANAS—1988 928 S4

WHEELS AND TIRES



3 PIECE TECHNO



TECHNO



993



C2



996 TURBO



CENTER CAPS



DESIGN 90



7" X 16" S CHROME



7" X 16" S



16" PHONE DIAL



EMERGENCY SPARE



BOLT ON SPACER

Sizes and Offset Information

Year/Model	Original Tire Size		Wheel Size	Back Offset	Spacing
	Front	Rear			
928 1978-1979	215/60 VR 15	215/60 VR 15	7 x 15	153.9 / 6.06	65 / 2.56"
	225/50 VR 16	225/50 VR 16	7 x 16	153.9 / 6.06	65 / 2.56"
928S4 1987-1991	225/50 VR 16	245/45 VR 16	7 x 16	153.9 / 6.06	65 / 2.56"
			8 x 16	153.9 / 6.06	52.3 / 2.09"
Club Sport and GT	225/50 VR 16	245/45 VR 16	8 x 16	161.6 / 6.36	60 / 2.36"
			9 x 16	187.5 / 7.38	60 / 2.36"
928 GT 1989-1991	225/50 ZR 16	245/45 ZR 16	7.5 x 16	153.9 / 6.06	65 / 2.56"
			9 x 16		52 / 2.05"
928 GTS 1992-1995	225/45 ZR 17	255/40 ZR 17	7.5 x 17	153.9 / 6.06	65 / 2.56"
			9 x 17		55 / 2.17"

993	993 Style Wheels 7.5 & 9x17	\$995.00
C2	C2 Style Wheels 7.5 & 9x17	\$995.00
TECHNO	Technology Style Wheels 7.5 & 9x17	\$995.00
TECHNO 3	3 PC. Techno Twist 8 & 9 x17	\$2,295.00
999 182 003 36	Lug Nut, Black	\$5.95
U999 182 003 36	Used Lug Nut	\$2.50
N 020 112 1	Open Top Steel Lug Nut	\$1.50
928 361 031 00	Silver Forged Center Wheel Cap	\$47.00
U92 8361 031 00	Used Silver Forged Center Cap	\$25.00
928 361 032 01	Cast Center Wheel Cap	\$28.00
U928 361 032 01	Used Cast Wheel Center Cap	\$15.00
U928 361 032 04	Used Platinum Forged Wheel Cap	\$20.00
928 361 032 11	Wheel Cap with Inlaid Crest	\$36.00
993 361 057 00	Wheel Lock Set	\$58.00
965 361 167 00	Wheel Lock Cap	\$1.50
993 361 303 00	Plastic 993 Center Cap	\$18.00
U928 361 008 02	Used Emergency Spare, '78-86	\$75.00
928 362 030 02	Emergency Spare, '86.5-91	\$417.06
U928 362 030 02	Used Emergency Spare, '86.5-91	\$150.00
928 361 016 00	7x16 Phone Dial Wheel	\$430.00
U928 361 016 00	Used 7x16 Phone Dial	\$100.00
U928 361 019 00	Used 7 x 15 Phone Dial	\$100.00
928 362 115 00	7x16 "S" Wheel	\$1,013.00
U928 362 115 00	Used 7x16 "S" Wheel	\$150.00
U928 362 117 00	Used 8x16 "S4" Rear Wheel	\$300.00
SPACERS	1" Bolt on Rear Wheel Spacers	\$195.00
U477 501 701	Used Wheel Spacer, '83-86 21mm	\$25.00
477 813 157	Hold Down Plate for Spare	\$20.00
U477 813 157	Used Hold Down Plate for Spare	\$10.00
N 04 0 281 1	Hold Down Bolt for Spare	\$5.00
POLISH	Polish Service	\$495.00
ANODIZE	Re-Anodize Service	\$595.00
CHROME	Chrome Exchange	\$695.00
MB	Mount and Balance	\$15.00

714-632-9288

928 INTERNATIONAL

000 043 004 00	Optimoly Grease	\$37.50
000 043 010 00	Loctite 574 for Lower Block	\$25.00
000 043 202 55	Adapter Cable For Maintainer	\$17.95
000 043 202 56	Porsche Battery Maintainer	\$74.00
000 721 300 00	Soft Socket for Wheel Lugs	\$27.00
000 721 710 02	Jack	\$178.00
U000 721 710 01	Used Jack	\$75.00
000 721 916 10	Flywheel Lock Tool, '78-82	\$79.00
000 721 916 11	Flywheel Lock Tool, '83-95	\$79.00
000 721 920 20	Aftermarket Belt Tension Tool	\$59.00
000 721 920 40	Oil Filter Wrench	\$29.00
000 721 923 50	Relay Removal Tool	\$76.00
U901 564 085 05	Used Sunroof Tool for Manual Opening	\$35.00
U999 571 045 02	Used Lug Wrench-19mm	\$15.00
Power	Power Brake Bleeder	\$42.95
928 610 023 03	87/88 Fuse Panel Chart	\$23.00
928 722 101 03	Tow Eye, '78-83	\$28.00
928 722 101 05	Tow Eye, '84-95	\$28.00
Ate	Super Blue Brake Fluid, 1 Liter	\$15.00
Cd	CD with In Car Camera Race Footage	\$9.00
Lexol	Lexol Leather Conditioner	\$10.00
Lexolc	Lexol Leather Cleaner	\$10.00
Pna 506 928 S4	Weatherproof Car Cover	\$159.00
Pna 505 928	Light Duty Car Cover	\$125.00
Pna 503 928 03	Bra, '78-86, no Spoiler	\$100.00
Pna 503 928 04	Bra, '78-86, with Spoiler	\$95.00
Pna 503 928 05	Bra, '87-95	\$95.00
Pna 541 928 00	Dash Sunshield	\$29.00
Pna 731 000	Mirror Bra Set, '78-91	\$33.00
Pna 731 965	Mirror Bra Set, '92-95	\$33.00



Lexol Leather Conditioner



Loctite 574 for Lower Block



Soft Socket for Wheel Lugs



Battery Maintainer



Wheel Locks



Aftermarket Belt Tension Tool



Belt Tension Tool

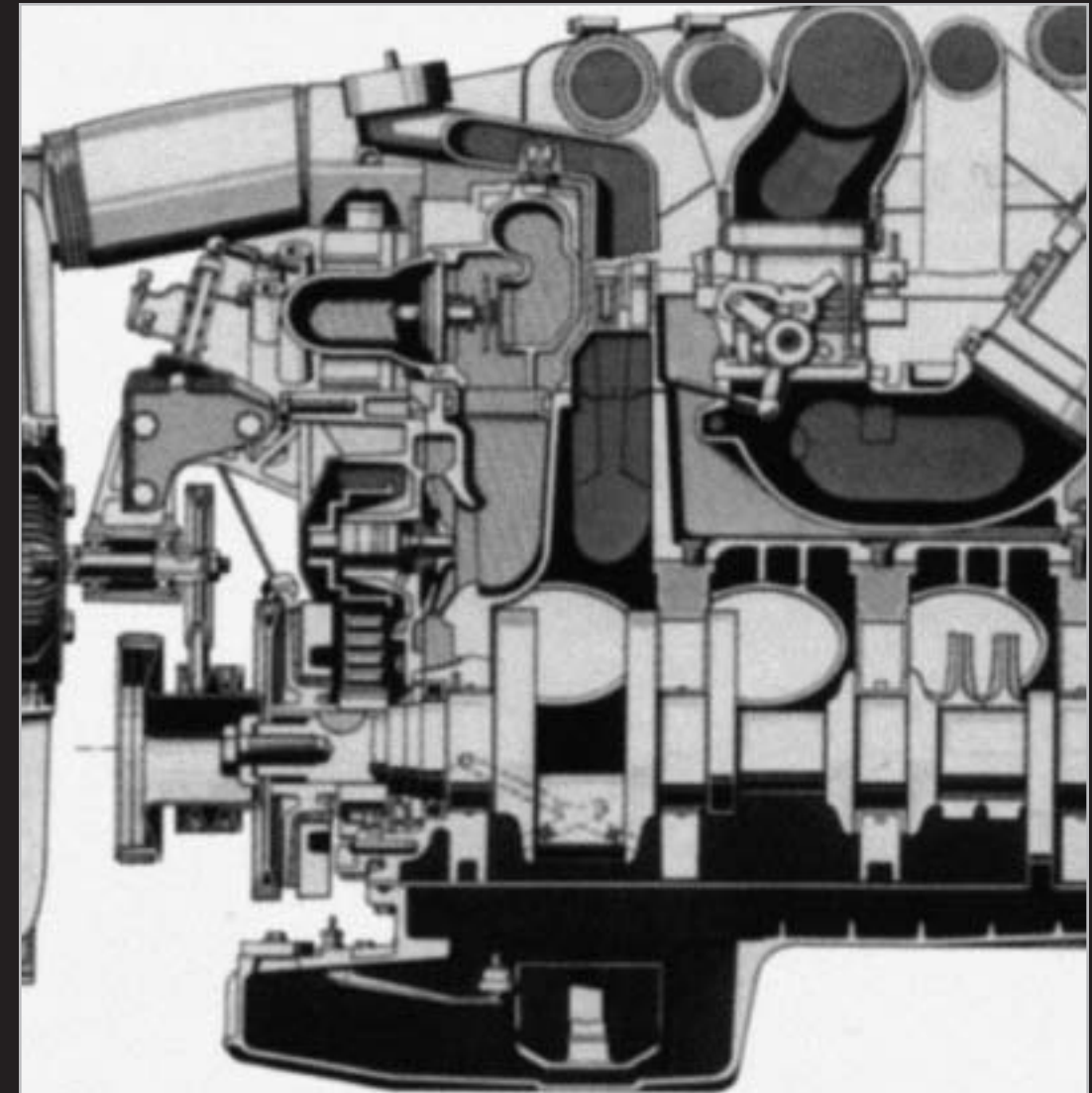


Flywheel Locks



Porsche Jack

USED PARTS NOW HAVE A 12 MONTH WARRANTY



MECHANICAL COMPONENTS

BELTS - FILTERS	12	IGNITION COMPONENTS	24
LUBRICATION	12	CLUTCHES	25
GASKETS	13	MANUAL TRANSMISSIONS	26
ENGINES	14	AUTOMATIC TRANSMISSIONS	27
HEADS - VALVES - CAMS	15	TORQUE TUBES AND SHIFTER COMPONENTS	28
ENGINE COMPONENTS	16	STEERING COMPONENTS	33
CAMBELTS AND DRIVES	17	SUSPENSION	34
COOLING	18	REAR AXLES	35
EXHAUST	20	BRAKES	36
FUEL TANKS AND PUMPS	21	AC AND HEATING	38
FUEL INJECTION COMPONENTS	22		

123 270 00 98	Trans Service Kit, Auto 3 Speed	\$35.00	▲
960 307 901 01	Trans Service Kit, 4 Speed	\$35.00	
FILTERS			
928 107 201 05	Oil Filter	\$6.50	
928 110 253 04	Fuel Filter, '80-95	\$16.00	
928 110 147 09	Fuel Filter, '78-79	\$29.50	
931 110 149 00	OEM Fuel Filter (must change fittings)	\$5.00	
928 110 185 03	Air Filter	\$32.00	
928 110 185 Kn	K & N Air Filter	\$68.00	
928 110 185 Ki	K & N Recharge Kit	\$12.95	
928 113 445 00	Smog Pump Filter	\$15.00	
BELTS			
928 105 157 00	Timing Belt, '78-82 (square tooth)	\$27.00	
928 105 157 50	Timing Belt, '83-95 (round tooth)	\$42.00	
999 192 117 50	Air Pump and Fan Belt, '78	\$12.00	
999 192 120 50	Air Pump and Fan Belt, '80-82	\$12.00	
999 192 128 50	Power Steering Belt, '78-84	\$12.00	
999 192 135 50	Alternator Belt, '78-81	\$12.00	
999 192 146 50	A/C Belt, '78-79	\$18.00	
999 192 160 50	Air Pump and Fan, '79 & '83-86	\$12.00	
999 192 214 50	Alternator Belt, '82-83	\$12.00	
999 192 259 50	Alternator Belt, '84	\$12.00	
999 192 266 50	Alternator Belt, '85-90	\$12.00	
999 192 286 50	Power Steering Belt '85-95	\$12.00	
999 192 305 50	A/C Belt, '80-95	\$12.00	
999 192 306 50	Air Pump, '87-95 12.5x925	\$12.00	
999 192 335 50	A/C Belt, '90-95 12.5x1080	\$19.00	
999 192 347 50	Alternator Belt, '90 At '95 At	\$23.00	
928 602 541 00	Euro Dual Distributor Belt	\$25.00	▼



- Fuel Filter
- Oil Filter
- Air Filter
- Smog Pump Filter

Belts

928 107 201 05	Oil Filter	\$6.50	▲
944 107 197 01	Oil Drain Plug, 19mm	\$10.00	
911 107 176 03	Oil Drain Plug, 21mm	\$18.00	
900 123 118 30	Crush Ring Oil Drain, 22x27	\$1.00	
U928 101 208 00	Used Oil Pan, '78-88	\$200.00	
U928 101 208 01	Used Oil Pan, '89-95	\$250.00	
928 101 207 00	Oil Pan Gasket	\$16.00	
U928 107 032 06	Used Oil Sump Pickup	\$80.00	
928 107 008 02	Engine Oil Pump, '83-95	\$418.00	
U928 107 008 00	Used Oil Pump, '80-82	\$200.00	
U928 107 008 02	Used Oil Pump, '83-95	\$200.00	
U928 107 018 06	Used Oil Pump, '78-79	\$200.00	
999 701 006 40	O-Ring For Oil Pump Bolts	\$1.50	
928 107 037 05	Oil Cooler Lines, '78-86	\$295.00	
U928 107 037 05	Used Oil Cooler Lines, '78-86	\$150.00	
928 107 737 07	Dip Stick, '78-84	\$56.00	
928 107 737 11	Dip Stick, '85	\$55.00	
928 107 041 01	Oil Dip Stick, '86-95	\$20.00	
928 107 107 04	Oil Pump Drive Gear, '78-82	\$35.00	
928 107 107 13	Oil Pump Drive Gear, '83-95	\$98.00	
U928 107 107 04	Used Oil Pump Drive Gear, '78-82	\$15.00	
U928 107 107 13	Used Oil Pump Drive Gear, '83-95	\$50.00	
928 107 136 04	Oil Pickup Tube Seal	\$6.00	
928 107 139 07	Oil Pan Baffle For GTS	\$18.00	
928 107 169 01	Oil Filler Gasket	\$4.00	
928 107 212 00	Oil Cooler, '90-95	\$461.00	
900 331 022 40	Oil Cooler O-Ring, '90-95	\$5.70	
928 107 307 00	Oil Filler Gasket, '87-95	\$10.00	
928 107 311 01	Oil Filler Hose to Pan	\$15.00	
928 107 313 00	Breather Hose, '85-86	\$27.00	
928 107 313 02	Filler Neck Vent Hose, '87-91	\$36.00	
928 107 315 00	Breather Hose, '78-84	\$15.00	
928 107 445 00	Valve Cover Hose, '85-86	\$39.00	
928 107 445 02	Valve Cover Hose, '87-95 (right front)	\$28.00	
928 107 601 00	Breather Hose Elbow, '85-86	\$20.00	
928 107 603 00	Oil Hose To Filler Neck, '87-95	\$48.00	
928 107 707 04	Oil Housing Gasket	\$5.50	
928 107 711 00	Cork Oil Cap Seal, '78-84	\$2.00	
928 107 717 03	Oil Strainer, '78-84	\$40.00	
928 107 722 00	Breather Hose, '78-83 (from filler cap)	\$38.00	
928 107 724 00	Breather Hose, '83-84 (from filler cap)	\$20.00	
928 606 203 01	Oil Pressure Sender, '78-88	\$55.00	
928 606 203 03	Oil Pressure Sender, '89-95	\$108.00	
944 107 091 01	Oil Filler Cap, '85-95	\$16.00	▼



- Oil Pan
- Oil Cooler Lines
- Oil Dip Stick

TIMING BELTS — The timing belt used on the 928 was, at the time, the longest rubber belt used on a production engine. Nearly seven feet long, it wraps around the front of the engine using power from the crank shaft to turn both camshaft drive pulleys, the oil pump pulley, and the water pump driven by the smooth back of the belt. Porsche recommends changing the timing belt at 60,000 miles; we suggest that the belt be changed at no more than 45,000 miles. The lowest recorded mileage for belt failure was 31,000 miles on an '85 model four valve. Age and mileage will impact the reliability of the belt.

On all four valve and some two valve engines, failure of the belt causes damage to the valves requiring a complete valve job (several thousand dollars in repairs). If the belt jumps or breaks, even if running at idle, it will bend most of the valves on the interference motors.

It is recommended that the water pump be changed when the belt is changed because the increased pressure from a newly tensioned belt often causes the old water pump to leak and fail.



928 100 901 00 WR	Engine Gasket Set, '78-82	\$325.00	▲
928 100 901 01	Engine Gasket Set, '83-84	\$425.00	
928 100 901 02	Engine Gasket Set, '85-86	\$495.00	
928 100 901 04	Engine Gasket Set, '87-95	\$449.00	
928 101 207 00	Oil Pan Gasket	\$16.00	
928 104 443 08	Spark Plug Seal, 4V	\$2.10	
928 104 447 06	Valve Cover Gasket, '85-86	\$24.74	
928 104 447 06 98	Valve Cover Gasket Set, '85-86	\$125.00	
928 104 447 09	Valve Cover Gasket, '87-95	\$14.95	
928 104 447 09 98	Valve Cover Gasket Set, '87-95	\$110.00	
928 100 901 01 WR	Head Gasket Set, '83-84 4.7	\$325.00	
928 104 903 00	Head Gasket Set, '85-86 5.0	\$395.00	
928 104 903 01	Head Gasket Set, '87-91 5.0	\$379.00	
944 105 199 03	Cam Tower Gasket, '78-84	\$8.00	
928 106 197 03	O-Ring for Cross Over, '84	\$3.80	
928 107 711 00	Cork Oil Cap Seal, '78-84	\$2.00	

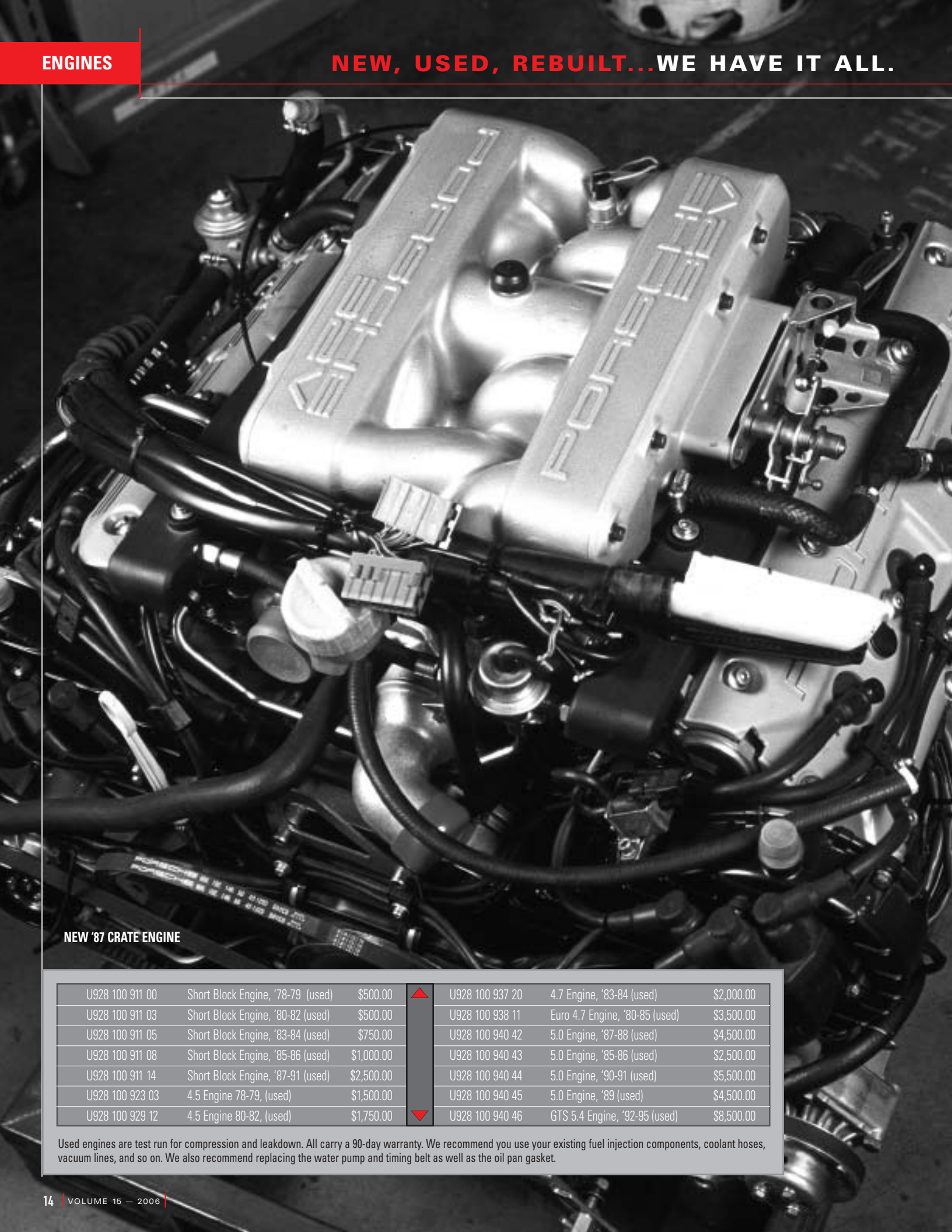
- Gasket Set
- Head Gasket

INTAKE MANIFOLDS

928 110 330 03	Intake Manifold Gasket, '78-84	\$4.00	
928 110 568 00	Intake Manifold Gasket, '86	\$59.00	
928 110 580 02	Intake Manifold Gasket, '87-95	\$20.00	
928 111 193 12	Exhaust Manifold Gasket, '78-84	\$5.95	
944 111 205 00	Manifold Gasket, '85-95 (at head)	\$16.00	
999 113 263 40	Seal Crankshaft (front)	\$25.00	
999 113 275 40	Oil Pump Shaft Seal	\$21.00	
999 113 282 40	Seal Camshaft	\$12.00	
999 113 426 41	Crankshaft Seal (rear)	\$25.00	

O-RINGS

928 606 213 03	Oil Level Sender Gasket	\$3.00	
999 701 183 50	O-Ring Seal Airmass Sensor	\$3.00	
999 701 210 40	O-Ring CIS Intake manifold	\$3.00	
999 701 320 40	O-Ring for Dip Stick	\$2.00	
999 701 425 40	O-Ring Cam Large, '78-79	\$14.00	
999 701 436 40	O-Ring CIS Throttle Body	\$12.00	
999 701 592 40	O-Ring Camshaft (small)	\$2.25	
999 701 599 40	O-Ring CIS Airflow Meter	\$9.00	
999 701 602 40	O-Ring Camshaft (large), '80-84	\$8.00	
999 701 627 40	O-Ring Thermostat Housing	\$7.00	
999 701 632 40	O-Ring Thermostat	\$5.50	
999 701 633 40	O-Ring Oil Pump	\$15.00	
999 701 650 40	O-Ring Tensioner Piston	\$1.00	
999 701 651 40	O-Ring For Radiator Drain Plug	\$2.00	
999 701 699 40	O-Ring Airmass Sensor	\$8.50	
999 701 731 40	O-Ring Valve Cover, '85-95	\$1.15	
999 701 846 40	O-Ring Oil Cap, '85-95	\$8.68	▼



NEW '87 CRATE ENGINE

U928 100 911 00	Short Block Engine, '78-79 (used)	\$500.00	▲	U928 100 937 20	4.7 Engine, '83-84 (used)	\$2,000.00
U928 100 911 03	Short Block Engine, '80-82 (used)	\$500.00		U928 100 938 11	Euro 4.7 Engine, '80-85 (used)	\$3,500.00
U928 100 911 05	Short Block Engine, '83-84 (used)	\$750.00		U928 100 940 42	5.0 Engine, '87-88 (used)	\$4,500.00
U928 100 911 08	Short Block Engine, '85-86 (used)	\$1,000.00		U928 100 940 43	5.0 Engine, '85-86 (used)	\$2,500.00
U928 100 911 14	Short Block Engine, '87-91 (used)	\$2,500.00		U928 100 940 44	5.0 Engine, '90-91 (used)	\$5,500.00
U928 100 923 03	4.5 Engine 78-79, (used)	\$1,500.00		U928 100 940 45	5.0 Engine, '89 (used)	\$4,500.00
U928 100 929 12	4.5 Engine 80-82, (used)	\$1,750.00	▼	U928 100 940 46	GTS 5.4 Engine, '92-95 (used)	\$8,500.00

Used engines are test run for compression and leakdown. All carry a 90-day warranty. We recommend you use your existing fuel injection components, coolant hoses, vacuum lines, and so on. We also recommend replacing the water pump and timing belt as well as the oil pan gasket.

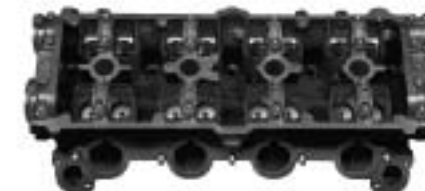
The 16-valve 928 engines '78-84 normally do not bend valves when the timing belt slips or breaks. The 32-valve engines '85-95 typically do, even if the failure happens at idle in the driveway. Most, if not all, of the valves hit the pistons. There has always been some confusion about the 16-valve; perhaps because the 944, with its higher compression and bigger camshafts, is an interference engine, and in most respects the 944 engine is half of a 928 V-8. But our experience confirms that the 928 16-valve engine should not normally bend valves. The exceptions would include excessive carbon buildup on the heads of the valve and in the notch reliefs on the piston, heads that have been milled/surfaced a lot, or big custom camshafts that have been installed. Porsche added a belt tension warning light to the '85 and newer 928s because belt tension was such an important issue given the cost of removing the engine, removing the heads, and replacing valves. This warning system has a built-in three minute or so delay before it checks for a ground circuit; if the pin in the tensioner is touching the arm for the main tension roller there should be no warning. It is a rather simple system and can often give false readings. So while you do not want to ignore it, it can give false warnings. In addition, do NOT rely on it to tell you BEFORE you have a problem.

999 062 044 02	2 Valve Exhaust Stud, 8x30	\$3.00
U928 104 014 02	Used Cylinder Head, '87-88	\$750.00
928 104 014 06	Cylinder Head, '89-95	\$1,495.00
U928 104 014 06	Used Cylinder Head, '89-95	\$1,250.00
U928 104 046 04	Used Cylinder Head, '78-79	\$250.00
U928 104 050 01	Used Cylinder Head, '85-86	\$500.00
928 104 054 00	Cylinder Head, '80-82	\$395.00
U928 104 054 00	Used Cylinder Head, '80-82	\$500.00
U928 104 055 05	Used Cylinder Head Euro S	\$500.00
U928 104 072 00	Used Cylinder Head, '83-84	\$500.00
928 104 111 01	Valve Cover Bolt (short), '87-95	\$23.00
U928 104 111 01	Used Valve Cover Bolt (short)	\$6.00
928 104 115 02	Valve Cover Grommet, 4V	\$1.50
928 104 116 00	Valve Cover Washer	\$1.00
928 104 117 01	Valve Cover Bolt, '87-95 (long)	\$10.00
928 104 193 12	Valve Guide Seal 2V	\$2.50
944 104 327 51	Valve Guide 4v	\$6.00
928 104 328 51	Valve Guide 2v	\$6.00
928 104 361 07	Head Gasket (right) 1-4, 4.7	\$84.00
928 104 362 07	Head Gasket (left) 5-8, 4.7	\$84.00
928 104 367 05	Head Gasket (right) 1-4, 5.0	\$70.00
928 104 368 05	Head Gasket (left) 5-8, 5.0	\$70.00
928 104 371 12	Head Gasket (right) 1-4, 4.5	\$84.00
928 104 372 12	Head Gasket (left) 5-8, 4.5	\$84.00
928 104 443 08	Spark Plug Seal, 4V	\$2.10
VALVE COVER GASKETS		
928 104 447 06	Valve Cover Gasket, '85-86	\$24.74
928 104 447 06 98	Valve Cover Gasket Set, '85-86	\$125.00
928 104 447 09	Valve Cover Gasket, '87-95	\$16.95
928 104 447 09 98	Valve Cover Gasket Set, '87-95	\$110.00
U928 104 461 08	Used Valve Cover, '87-95	\$75.00
U928 104 484 00	Used Spacer, '85/86 Head	\$10.00
928 104 601 07	Valve Guide Seal, 4V	\$2.50

CAMSHAFTS		
U928 105 156 07	Used Camshaft (left), '78-79	\$500.00
U928 105 173 01	Used Camshaft (right), '80-82	\$250.00
U928 105 174 01	Used Camshaft (left), '80-82	\$500.00
U928 105 187 00	Used Euro Cam (right), '80-83	\$450.00
U928 105 188 00	Used Euro Cam (left), '80-83	\$650.00
944 105 199 03	Cam Tower Gasket, '78-84	\$8.00
U928 105 203 00	Used Camshaft (right), '83-84	\$250.00
U928 105 204 00	Used Camshaft (left), '83-84	\$500.00
HYDRAULIC LIFTERS		
928 105 311 06	Hydraulic Lifter, '78-84	\$69.95
U928 105 311 06	Used Hydraulic Lifter, '78-84	\$15.00
928 105 312 02	Hydraulic Lifter, '85-95	\$44.95
U928 105 312 02	Used Hydraulic Lifter, '85-95	\$15.00
928 105 409 02	Intake Valve, '80-85 (Euro)	\$50.00
928 105 410 04	Exhaust Valve, '80-85 (Euro)	\$85.00
VALVES		
928 105 413 00	Intake Valve, '78-84	\$35.00
928 105 417 03	Exhaust Valve, '78-84	\$35.00
928 105 427 01	Lifter gasket, '78-82	\$5.00
928 105 641 01	Intake Valve, '85-86	\$35.00
928 105 641 05	Intake Valve, '87-95	\$35.00
928 105 642 01	Exhaust Valve, '85-86	\$45.00
928 105 642 06	Exhaust Valve, '87-95	\$30.00
900 117 050 00	Flat Cam Woodruff Key	\$1.00
900 174 056 40	O-Ring for Valve Cover Plug	\$0.65
900 219 004 02	Plug in 2V Head	\$3.00
928 105 149 03	Rubber Cam Tower Plug, '78-79	\$6.11
928 105 205 00	Cam Plug Support, 4V	\$5.00
928 105 215 00	Plug for 4V Cylinder Head	\$8.50
999 113 282 40	Camshaft Seal	\$12.00
999 701 592 40	Small Camshaft O-Ring	\$2.25
999 701 602 40	Large Camshaft O-Ring, '80-84	\$8.00
928 105 184 00	Small Seal in Cam Tower (front)	\$1.51
928 105 189 02	Cork Gasket on Cam Tower (rear)	\$1.10



16 Valve Head



32 Valve Head



Camshafts

U900 083 036 02	Used Front Crankshaft Bolt	\$3.70
U928 101 123 02	Used Alternator Bracket, '85-95	\$75.00
U928 101 127 00	Used Alternator adj. Bracket, '85-95	\$25.00
U928 101 402 07	Used Alternator adj. Bracket, '78-84	\$9.00
MAIN BEARINGS		
928 101 901 01	Main Bearing Set, '78-81	\$249.00
928 101 901 02	Main Bearing Set, '81-84	\$275.00
928 101 901 08	Main Bearing Set, '84-95	\$280.00
928 103 172 02	Connecting Rod Nut	\$2.00
928 103 133 00	Connecting Rod Bushing	\$4.60
928 103 143 05 002	Rod Bearing Set (standard)	\$129.00
928 102 011 25	Crankshaft, '78-84	\$750.00
U928 102 011 25	Used Crankshaft, '78-84	\$250.00
U928 102 011 27	Used Crankshaft, '85-91	\$750.00
PULLEYS		
928 102 118 00	AC Pulley, '78-79	\$25.00
928 102 118 03	AC Pulley, '80-86	\$71.00
U928 102 118 03	Used AC Pulley, '80-86	\$30.00
928 102 120 14	Vibration Damper, '78-79	\$711.00
U928 102 120 14	Used Vibration Damper, '78-79	\$200.00
928 102 120 16	Vibration Damper, '80-82	\$711.00
U928 102 120 16	Used Vibration Damper, '80-82	\$200.00
928 102 120 23	Vibration Damper, '83-91	\$695.00
U928 102 120 23	Used Vibration Damper, '83-91	\$300.00
928 102 120 24	Vibration Damper, '92-95	\$675.00
U928 102 120 24	Used Vibration Damper, '92-95	\$300.00
928 102 124 01	Crank Washer on Front	\$21.00
928 102 125 02	Thrust Washer at Crank	\$2.69
928 102 130 02	Crankshaft Pulley, '78-81	\$124.00
U928 102 130 02	Used Crank Pulley, '78-81	\$50.00
928 102 139 02	Crankshaft Pulley, '82	\$232.00
U928 102 139 02	Used Crank Pulley, '82	\$100.00
928 102 139 03	Crankshaft Pulley, '82-83	\$295.00
U928 102 139 03	Used Crank Pulley, '82-83	\$150.00

928 102 139 05	Crankshaft Pulley, '84	\$230.00
U928 102 139 05	Used Crank Pulley, '84	\$100.00
928 102 139 11	Crankshaft Pulley, '85-90	\$151.00
U928 102 139 11	Used Crank Pulley, '85-90	\$120.00
FLYWHEELS		
928 102 075 00	AT Flywheel, '83	\$295.00
928 102 075 01	AT Flywheel, '85-86	\$1,270.00
928 102 075 02	AT Flywheel, '84-86	\$1,270.00
928 102 075 03	AT Flywheel, '87-88	\$1,177.00
928 102 075 04	AT Flywheel, '89-91	\$1,266.00
928 102 151 01	Flywheel Bolt	\$3.16
928 102 202 04	5 Speed Flywheel, '78-79	\$395.00
U928 102 202 04	Used 5 Speed Flywheel, '78-79	\$150.00
928 102 202 10	5 Speed Flywheel, '80-83	\$249.00
U928 102 202 10	Used 5 Speed Flywheel, '80-83	\$200.00
928 102 202 11	5 Speed Flywheel, '84	\$295.00
U928 102 202 11	Used 5 Speed Flywheel, '84	\$200.00
928 102 078 01	5 Speed Flywheel, '85-86	\$864.00
U928 102 078 01	Used 5 Speed Flywheel, '85-86	\$400.00
928 102 208 03	5 Speed Flywheel, '87-95	\$595.00
U928 102 208 03	Used 5 Speed Flywheel, '87-95	\$250.00
PISTONS		
U928 103 043 07	Used Piston 100mm, '87-91	\$50.00
928 103 093 00	Piston, 97mm '83-84	\$296.00
U928 103 093 00	Used Piston, 97mm '83-84	\$50.00
928 103 902 00	Piston Ring Set, 95mm '78-79	\$67.00
928 103 906 11	Piston Ring Set 4.7 (8 required)	\$24.95
928 103 906 28	Piston Ring Set, '85-91	\$28.00
U922 116 025 00	Used Ring Gear AT, '78-82	\$150.00
U922 116 041 03	Used 4 Speed Flex Plate at Engine	\$150.00
MOTOR MOUNTS		
928 375 039 00	Engine Mount, '83-95	\$295.00
928 375 043 02	Engine Mount, '78-82	\$139.00
928 375 179 02	Engine Shock, '78-79	\$129.00

TENSIONERS		
928 105 036 00	Belt Tensioner, '85-95	\$1095.00
U928 105 036 00	Used Belt Tensioner, '85-95	\$450.00
928 105 036 0R	Belt Tensioner, '85-95 (rebuilt exch.)	\$349.00
928 105 046 06	Belt Tensioner, '83-84	\$741.00
U928 105 046 06	Used Belt Tensioner, '78-84	\$400.00
928 105 046 06R	Belt Tensioner, '78-84 (rebuilt exch.)	\$295.00
928 105 489 00	Tensioner Arm, '85-86	\$126.00
U928 105 489 00	Used Tensioner Arm, '85-86	\$60.00
928 105 489 02	Tensioner Arm, '87-95	\$161.00
U928 105 489 02	Used Tensioner Arm, '87-95	\$80.00
928 105 512 12	Tension Roller, '78-95	\$69.50
928 105 540 05	Tensioner Arm, '78-84	\$88.00
U928 105 540 05	Used Tensioner Arm, '78-84	\$35.00
928 105 552 06	Tensioner Boot, '83-84	\$22.00
928 105 552 08	Tensioner Boot, '85-95	\$21.95
999 512 322 02	Tensioner Boot Clamp, '78-82	\$6.00
999 512 345 02	Tensioner Boot Clamp, '83-95	\$6.00
U928 105 570 00	Used Shoulder Bolt, '78-81 10mm	\$20.00
928 105 570 03	Shoulder Bolt, '82-86 12mm	\$13.00
928 105 570 08	Shoulder Bolt, '87-95 12mm	\$44.00
928 105 067 00	Lower Guide Roller (1 bearing)	\$149.00
U928 105 067 00	Used Lower Roller (under crank)	\$50.00
928 105 067 01	Lower Guide Roller (2 bearings)	\$202.09
U928 105 067 01	Used Lower Roller (under crank)	\$75.00
928 105 067 02	Bearing for Lower Guide Roller	\$20.00
N 01 2 408 2	Clip for Lower Roller	\$1.00
GEARS		
928 105 125 03	Timing Gear Crank, '78-82	NLA
U928 105 125 03	Used Timing Gear Crank, '78-82	\$85.00
928 105 125 12	Timing Gear Crank, '83-95	\$98.00
U928 105 125 12	Used Timing Gear Crank, '83-95	\$40.00
928 105 545 04	Cam Gear, '78-82 (square tooth)	\$115.00
U928 105 545 04	Used Cam Gear, '78-82	\$50.00
928 105 545 10	Cam Gear, '83-84 (round tooth)	\$112.00
U928 105 545 10	Used Cam Gear, '83-84	\$50.00
928 105 530 01	Timing Gear Cam, '85-95	\$112.00

U928 105 530 01	Used Timing Gear Cam, '85-95	\$50.00
U928 105 459 00	Used Cam Gear Hub, '85-95	\$13.00
928 107 107 04	Oil Pump Drive Gear, '78-82	\$36.00
928 107 107 13	Oil Pump Drive Gear, '83-95	\$98.00
U928 107 107 04	Used Oil Pump Drive Gear, '78-82	\$15.00
U928 107 107 13	Used Oil Pump Drive Gear, '83-95	\$50.00
928 105 144 05	Center Belt Cover, '78-84	\$69.00
U928 105 144 05	Used Center Belt Cover, '78-84	\$30.00
928 105 144 07	Center Belt Cover, '87-95	\$67.00
928 105 145 04	Left Belt Cover, '78-84	\$39.00
U928 105 145 04	Used Left Belt Cover, '78-84	\$20.00
928 105 146 03	Right Belt Cover, '78-84	\$37.00
U928 105 146 03	Used Right Belt Cover, '78-84	\$15.00
928 105 147 05	Center Belt Back, '87 (1 roller)	\$63.00
928 105 149 03	Cam Tower Rubber Plug, '78-79	\$6.11
TIMING BELTS		
928 105 157 00	Timing Belt, '78-82 (square tooth)	\$27.00
928 105 157 50	Timing Belt, '83-95 (round tooth)	\$42.00
928 105 157 60	Timing Belt, '83-95 (OEM)	\$104.00
CAM SEALS / O-RINGS		
928 105 184 00	Small Seal Cam Tower Ft.	\$1.51
928 105 189 02	Cork Gasket at Cam Tower Rear	\$1.10
928 105 205 00	Cam Plug Support on 4V	\$5.00
928 105 215 00	Plug for 4V Cylinder Head	\$8.50
928 105 262 00	Pin, '87-95 (head)	\$1.25
928 105 571 00	Idler Roller, '78-84	\$50.00
928 105 571 02	Idler Roller, '85-86	\$55.00
928 105 571 04	Idler Roller, '87-95	\$76.00
928 105 572 00	Spacer Washer for Arm	\$6.00
928 105 611 05	Belt Tensioner Gasket	\$12.00
928 105 615 01	Copper Contact for Tensioner	\$34.00
999 924 002 40	Tensioner Arm Bushing, '78-81	\$1.70
999 924 003 40	Tensioner Arm Bushings, '82-84	\$2.00
928 105 613 04	Tensioner Arm Bushing, '85-95	\$18.00
928 105 611 05	Tensioner Gasket	\$12.00
999 701 650 40	O-Ring for Tensioner	\$1.00



100 mm Piston for 5 Liter Motor



- Intake Tubes
- Intake Manifold
- Upper Air Cleaner



- 5 Speed Flywheel
- Motor Mount
- Automatic Flywheel
- Harmonic Balancer
- Main Bearings



- Belt Tensioner
- Tensioner Boot
- Idler Roller
- Tension Roller
- Tensioner Metallic Washer

Camshaft Gear



WATER PUMPS

928 106 015 20	Water Pump, '87-95	\$295.00
928 106 015 22	Water Pump, '78-86	\$269.00
928 106 015 KX	Water Pump, '78-86 (rebuilt)	\$119.00
928 106 015 LX	Water Pump, '87-95 (rebuilt)	\$119.00
WPC	Water Pump Core*	\$200.00
900 075 333 02	Water Pump Bolts 6x25	\$1.50
928 106 134 05	Water Pump Gasket	\$3.00
900 249 008 02	Countersink Screw on Late Water Pump	\$1.00

RADIATORS

928 106 023 18	Radiator No Cooler, '78-86	\$785.00
U928 106 023 18	Used Radiator, No Cooler, '78-86	\$300.00
928 106 023 20	Radiator No Cooler, '90-95	\$649.00
928 106 040 02	Radiator, 2 Cooler, '78-86	\$1,195.00
U928 106 040 02	Used Radiator, 2 Cooler, '78-86	\$500.00
928 106 041 01	Radiator Tank with seal (2 cooler holes)	\$95.00
928 106 041 02	Radiator Tank with Seal (no cooler holes)	\$95.00
U928 106 042 01	Used Radiator with Oil Cooler	\$400.00
928 106 042 02	Radiator w Trans Cooler, '78-84	\$875.00
U928 106 042 02	Used Radiator with Trans Cooler	\$400.00
928 106 042 03	Radiator w Trans Cooler, '90-95	\$895.00
928 106 043 01	Radiator, 2 Coolers, '87-91	\$1,495.00
U928 106 043 01	Used 2 Cooler Radiator, '87-91	\$600.00
928 106 044 01	Radiator with Oil Cooler, '87-89	\$895.00
U928 106 123 20	Used No Cooler Radiator, '87/95	\$300.00
928 106 443 02	Radiator Top Nipple	\$3.50
928 106 444 01	Radiator Drain Plug, '78-95	\$3.75

FANS

928 106 063 00	Upper Fan Shroud, '78-84	\$155.00
U928 106 063 00	Used Upper Fan Shroud, '78-84	\$45.00
928 106 063 03	Upper Fan Shroud, '85-86	\$157.00
U928 106 063 03	Used Upper Fan Shroud, '85-86	\$75.00
928 106 080 02	Euro Fan Belt Tensioner (also 1980)	\$742.00
U928 106 080 02	Used Euro Fan Belt Tensioner	\$250.00
928 106 110 04	Fan Clutch Carrier, '78-86	\$58.00
U928 106 110 04	Used Fan Carrier, '78-86	\$25.00
928 106 112 05	Fan Clutch, '78-86	\$345.00
U928 106 112 05	Used Fan Clutch, '78-86	\$175.00
928 106 445 02	Fan Clutch Bearing, '81-86	\$38.00
928 106 441 05	Fan Clutch Bearing Rear, '78-86	\$28.00
928 102 111 02	Pilot and Fan Clutch Bearing	\$15.00
U928 106 113 02	Used Fan Pulley, '78-80	\$35.00
928 106 113 05	Fan Pulley, '81-86	\$81.00
U928 106 113 05	Used Fan Pulley, '81-86	\$35.00

THERMOSTATS

928 106 129 16	Thermostat, '75 (C with O-Ring)	\$25.00
928 106 129 17	Thermostat, '83 (C with O-Ring)	\$25.00
U928 106 137 01	Used Fan Blade, '83-86	\$50.00

928 106 143 00	Lid For Smog Pump Filter, '87-95	\$4.50
928 106 163 00	Thermostat Seal, '84-95	\$11.00
928 106 167 01	Water Housing Gasket, '87-95	\$2.00
928 106 177 01	Radiator Top Mount	\$4.00
928 106 197 02	Water Flange Gasket	\$29.00
928 106 197 03	O-Ring for Cross Over, '84	\$3.80
928 106 197 04	Water Flange Gasket, '78-84	\$2.50
928 106 227 00	Cross Over Housing Seal, '85-95	\$3.06

HOSES

928 106 238 06	Upper Radiator Hose, '78-84	\$35.00
928 106 238 08	Upper Radiator Hose, '85-95	\$27.00
928 106 239 08	Lower Radiator Hose, '78-85	\$36.00
928 106 239 09	Lower Radiator Hose, '86-95	\$27.00
928 106 256 03	Coolant Expansion Tank, '78-95	\$115.00
928 106 257 03	Radiator Cap, '78-95	\$6.00
930 110 256 02	Expansion Tank Plug for Extra Nipple	\$2.00
999 512 255 02	Hose Clamp for Expansion Tank Plug	\$2.00
928 106 259 02	Fan Shroud, '87-95	\$232.00
U928 106 259 02	Used Fan Shroud, '87-95	\$100.00
928 106 262 02	Fan Shroud (lower), '78-86	\$42.00
U928 106 262 02	Used Fan Shroud (lower), '78-86	\$20.00
928 106 275 02	Thermostat to Reservoir Hose, '83-86	\$18.00
928 106 275 03	Thermostat to Reservoir Hose, '87-95	\$22.00
928 106 277 01	Radiator to Reservoir Hose, '78-83	NLA
928 106 277 02	Radiator to Reservoir Hose, '84-95	\$33.00
928 106 321 03	Thermostat to Reservoir Hose '78-84, '87-95	\$37.00
928 106 321 04	Thermostat to Reservoir Hose, '85-86	\$37.00
928 106 323 01	Reservoir to Y Pipe Hose	\$10.92

HEATERS

928 574 567 02	Engine Heater Valve Hose, '78-84	\$4.50
928 574 567 03	Engine Heater Valve Hose, '85-95	\$10.00
928 574 573 03	Heater Control Valve (rear of engine)	\$41.00
928 574 587 03	Heater Hose Intake, '78-95	\$26.00
928 574 589 04	Heater Hose Return, '78/95	\$44.00
928 574 717 02	Vacuum Elbow	\$5.00
928 606 201 01	Coolant Temp Sender, '78-88	\$45.00
928 606 201 03	Coolant Temp Sender, '89-95	\$25.77
U928 618 418 00	Used Fan Control Unit, '87-95	\$125.00
U928 618 421 00	Used Fan Speed Amplifier	\$150.00
U928 624 103 00	Used Cooling Fan, '78-79	\$100.00
U928 624 103 01	Used Cooling Fan, '80-86	\$200.00
U928 624 129 00	Used Vent Control Motor, '83.5+	\$200.00
928 624 145 00	Electric Cooling Fan, '87-95	\$271.00
U928 624 145 00	Used Cooling Fans, '87-95	\$100.00
823 959 481 F 7	Fan Switch-75' '78-86	\$12.00
823 959 481 F 9	Fan Switch-92' '78-86	\$12.00
928 641 503 01	Coolant Level Sensor	\$65.00
999 701 632 40	Thermostat O-Ring	\$5.50
928 606 149 00	Fan Switch in Radiator, '87-95	\$59.00

*Casting cannot be broken

Cooling Problems

The 928 International race car utilizes a stock Behr radiator and regularly races in the high desert of California. Our car runs consistently and successfully at Willow Springs International Raceway in 100° weather and experiences no overheating problems.

The 928 engine cannot run without a thermostat or with the incorrect thermostat. The round disc on the rear of the thermostat closes the hole in the rear of the thermostat housing as the thermostat opens to circulate water to the radiator. The thermostat o-rings must be the correct size and thickness as well as being placed on the side of the thermostat toward the radiator. This allows a proper seal of the opening at the back of the housing. If the disc does not seal the hole at the back of the thermostat housing, coolant will be recirculated in the engine instead of being sent to the radiator, causing overheating.

The belt-driven fan on pre-1987 928s incorporates a silicon filled viscous fan clutch which should tighten with heat, thereby turning the fan blade faster when hot. This clutch degrades over time, particularly if it is removed from the engine during repairs and left sitting face down with the shaft in a vertical rather than a horizontal position, causing the silicon to leak out.

The auxiliary electric fan should engage thermostatically or anytime the air conditioning is turned on.

If the car overheats in traffic but cools down on the highway, you most likely have an air flow problem.



Radiator, Water Pumps and Hoses



Fan Mount, Fan, Bearings, Clutch and Pulley



Water Pump



Thermostat with O-Ring and Radiator Cap

The dual electric fan cooling system '87-95 is rather complex, especially the '87-90 air flaps in front of the radiator. The system includes a computer brain under the carpeted cover beside the passenger seat, a control unit mounted on the panel in front of the radiator (looks like an amplifier), a temp sensor in the front of the radiator left front lower, and a temp sensor in the center rear top of the intake manifold. Automatic transmissions have a temp switch on the trans, the A/C system has a pressure switch to tell the computer when it is generating heat, and the hood light switch interrupts the operation of the fan circuit as a safety. The '87-90 models had adjustable louvers and a servo motor in the ducting in front of the radiator to adjust airflow (which can fail in the closed position and cause rapid overheating). The cooling fans have variable speeds as the voltage is stepped down from 12 volts. The system senses if an electric fan has failed and increases the speed of the remaining fan to compensate. When the intake temperature sensor fails, it causes the fans to run until the battery goes dead.



RMB8 6	Rear Muffler Bypass, '86.5	\$149.00
RMB8 6 STAINLESS	Stainless Rear Muffler Bypass, '86.5	\$229.00
RMB STAINLESS	Stainless Rear Muffler Bypass, '87-95	\$185.00
RMB	Rear Muffler Bypass, '87-95	\$149.00
928 111 044 00	Rear Muffler, Late '86	\$195.00
U928 111 097 01	Used Rear Muffler, '87-89	\$250.00
928 111 097 04	Rear Muffler, '90-95	\$395.00
U928 111 097 04	Used Rear Muffler, '90-95	\$250.00
928 111 127 02	Gasket to Catalytic, '78-95	\$15.95
928 111 135 01	Muffler Gasket, '78-79 (cat rear)	\$14.00
U928 111 145 05	Used Exhaust Manifold, '85-86 (right)	\$250.00
U928 111 146 05	Used Exhaust Manifold, '85-86 (left)	\$250.00
928 111 181 00	Washer for Exhaust Manifold	\$2.00
928 111 193 12	Exhaust Manifold Gasket, '78-84	\$5.75
928 111 244 03	Seal Ring at Cat Rear, '78-84	\$20.00
928 111 252 00	Rubber Bushing for Muffler, '78	\$8.00
928 111 259 02	Rubber Muffler Hanger	\$10.00
928 111 264 01	Muffler Hanger Bracket	\$7.00
U928 111 264 01	Used Muffler Hanger Bracket	\$3.00
U928 111 427 00	Used Muffler Hanger	\$20.00
RMS	Stainless Exhaust, '79-84	\$595.00
U928 111 931 00	Used Rear Muffler, '80-82	\$150.00
U928 111 931 02	Used Rear Muffler, '83-84	\$150.00
928 111 933 00	Rear Muffler, '85-86 (early)	\$195.00
U928 111 933 00	Used Rear Muffler, '85-86 (early)	\$995.00
928 111 934 00	Center Muffler, '80-84	\$695.00
U928 111 934 00	Used Center Muffler, '80-84	\$250.00
928 111 935 00	Center Muffler, '85, early '86	\$1591.00
U928 111 935 00	Used Center Muffler, '85, early '86	\$250.00



Oxygen Sensors

AIR INJECTION / SMOG PUMPS		
928 113 445 00	Smog Pump Filter	\$15.00
928 113 017 00	Rebuilt Smog Pump, '80-95	\$149.00
928 113 109 04	Rebuilt Smog Pump, '78-79	\$149.00
SPC	Smog Pump Core	\$50.00
U928 113 113 10	Used Smog Pump Adjuster	\$15.00
928 113 139 09	Smog Pump Hose	\$64.00
928 113 140 03	Air Hose for Check Valve, '78-80	\$10.00
928 113 140 05	Air Hose for Check Valve, '81-84	\$11.00
U928 113 145 00	Used Smog Pump Filter Cover, '78-86	\$25.00
U930 113 147 01	Used Diverter Valve	\$75.00
928 113 149 00	Smog Pump Hose	\$4.00
928 113 155 00	Smog Pump Intake Hose	\$11.00
928 113 159 02	Elbow Hose for EGR	\$32.00
CATALYTICS		
U928 113 134 11	Used Catalytic Converter, '78-79	\$250.00
U928 113 138 06	Used Catalytic Converter, '80	\$250.00
U928 113 211 04	Used Catalytic Converter, '81-84	\$250.00
U928 113 212 01	Used Catalytic Converter, '85-86	\$350.00
U928 113 219 01	Used Catalytic Converter, '87-89	\$350.00
911 606 123 00	Oxygen Sensor, '80-82	\$89.00
928 606 123 UN	Universal Oxygen Sensor, '80-82	\$40.00
928 606 124 00	Oxygen Sensor, '83-84	\$198.00
928 606 128 00	Oxygen Sensor, '85-86	\$139.00
928 606 128 01	Oxygen Sensor, '87-95	\$150.00
928 606 128 UN	Universal Oxygen Sensor, '83-95	\$60.00
999 901 008 005	Exhaust Nut 8mm	\$1.00



Exhaust Manifold 32 Valve

TANKS		
928 201 003 08	Fuel Tank, '78-95	\$1,057.00
U928 201 003 08	Used Fuel Tank, '78-95	\$450.00
928 201 027 03	Fuel Restrictor Insert	\$43.00
928 201 057 02	Fuel Filler Protective Flap	\$18.00
U928 201 057 02	Used Protective Flap	\$8.00
928 201 081 04	Fuel Tank Strainer (37x1.5)	\$49.00
928 201 145 02	Fuel pump cover, '78-79	\$87.00
U928 201 145 02	Used Fuel Pump Cover, '78-79	\$40.00
928 201 145 03	Fuel Pump Cover, '80-95	\$87.00
U928 201 145 03	Used Fuel Pump Cover, '80-95	\$40.00
928 201 187 02	Seal at Bottom of Tank	\$3.50
928 201 219 02	Y Connector for Charcoal Can	\$3.00
928 201 275 03	Fuel Cap Seal	\$9.00
928 201 313 02	Gas Tank Strap, '78-79	NLA
U928 201 313 02	Used Gas Tank Strap, '78-79	\$75.00
928 201 313 03	Gas Tank Strap, '80-83.5	\$318.00
U928 201 313 03	Used Gas Tank Strap, '80-83.5	\$125.00
928 201 313 04	Gas Tank Strap, '83.5-86	\$242.00
U928 201 313 04	Used Gas Tank Strap, '83.5-86	\$100.00
928 201 313 06	Gas Tank Strap '87-95	\$515.00
U928 201 313 06	Used Gas Tank Strap, '87-95	\$150.00
928 201 327 02	O-Ring Seal for Level Sender	\$3.00
GAS CAPS		
928 201 333 02	Gas Filler Boot	\$36.00
928 201 903 02	Gas Tank Cap, '78-95	\$149.00
U928 201 903 02	Used Gas Cap, '78-95	\$75.00

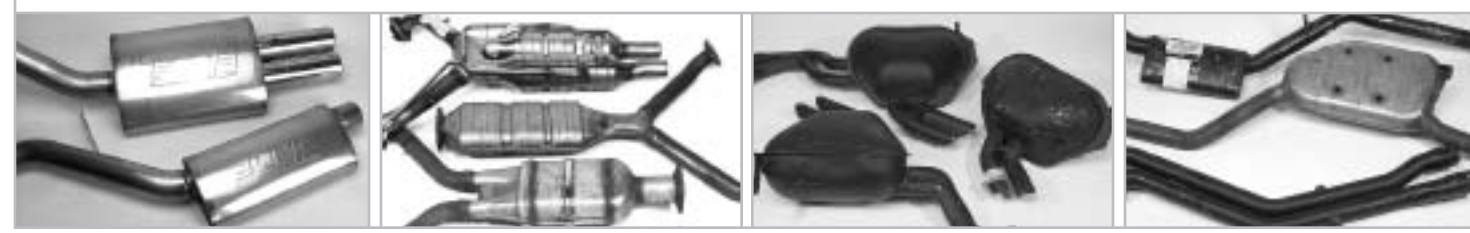
928 356 063 10	Fuel Line Filter to Pump	\$38.00
U928 356 063 10	Used Fuel Line, Filter to Pump	\$15.00
928 356 550 04	Fuel Hose with in Tank Pump	\$21.00
928 356 550 05	Fuel Hose w/o Pump	\$15.00
FUEL PUMPS		
928 608 013 00	Fuel Pump in Tank	\$159.00
U928 608 013 00	Used Fuel Pump in Tank	\$60.00
911 608 102 00	Fuel Pump, '78-79 w check #984	\$349.00
911 608 102 02	Fuel Pump, '78-79 #967	\$329.00
U911 608 102 02	Used Fuel Pump, '78-79 #967	\$150.00
928 608 104 01	Fuel Pump, '80-86 #464 017	\$279.00
U928 608 104 01	Used Fuel Pump, '80-86 #464 017	\$100.00
928 608 104 02	Fuel Pump, '87-88 #464 045	\$195.00
U928 608 104 02	Used Fuel Pump, '87-88 #464 045	\$100.00
928 608 104 03	Fuel Pump, '89-95 #464 057	\$260.00
U928 608 104 03	Used Fuel Pump, '89-95 #464 057	\$100.00
930 608 113 00	Fuel Pump in Fender, '78-79 #979	\$389.00
U930 608 113 00	Used Fuel Pump in Fender, '78-79 #979	\$185.00
FUEL LEVEL SENDING UNITS		
928 641 030 01	Fuel Level Sensor, '78-88	\$100.00
928 641 030 02	Fuel Level Sensor, '89-95	\$100.00
900 906 046 00	Ring for Gas Cap Flap	\$6.00
893 906 093	Check Valve at Fuel Pump	\$22.00



Fuel Filter Under Tank



- Fuel Line Under Tank
- Inside Tank Fuel Pump
- Fuel Filter
- Accumulator
- Fuel Pressure Regulator
- Fuel Level Sending Unit
- Fuel Pump
- Fuel Cap



Borla Exhausts

Catalytic Converters

Rear Mufflers

Intermediate Mufflers

IF YOU DON'T SEE IT
CALL 714-632-9288

928 110 225 00	Fuel Injector Valve, '78-79	\$40.00
928 606 110 OR	Fuel Injector, '80-84 (rebuilt)	\$59.00
928 606 119 OR	Fuel Injector, '87-95 (rebuilt)	\$59.00
928 606 119 02	Used Fuel Injector, '87-95	\$50.00
928 606 120 OR	Fuel Injector, '85-86 (rebuilt)	\$59.00
928 606 120 00	Used Fuel Injector, '85-86	\$50.00
INJECTOR SEALS		
311 133 261 A	Injector Seal (small), '80-84	\$1.00
311 133 263	Injector Seal (large), '80-84	\$1.00
944 110 901 00	Injector Seal Kit, '85-86	\$5.95
928 110 903 00	Injection Hose Repair Kit, '80-84	\$35.00
928 110 904 00	Injector Seal Kit, '87-95	\$7.95
928 110 049 00	Mount for Air Cleaner, '80-84	\$32.00
930 110 122 00	Seal for CIS Air Box	\$12.00
928 110 158 01	Intake Boot, '78-84 (8 required)	\$6.00
928 110 174 08	Air Hose Under Manifold, '85-86	\$25.00
928 110 174 09	Stabilizer Hose, '87-95	\$34.00
928 110 175 00	Vacuum Limiter Hose CIS	\$6.00
928 110 177 02	Regulator Air Hose, '78-79	\$18.00
928 110 178 00	Vacuum Limiter Hose CIS	\$21.00
928 110 191 00	Rubber Mount-Plenum to Block	\$6.00
931 110 191 00	Rubber Air Box Mount, '85-95	\$12.00
FUEL ACCUMULATORS		
928 110 197 05	Fuel Accumulator, '78-79	\$229.00
928 110 197 07	Fuel Accumulator, '79 from 0639	\$148.00
928 110 198 01	Pressure Regulator, '80-86	\$79.00
928 110 198 01ADJ	Adj. Fuel Pressure Regulator, '80-86	\$249.00
928 110 198 02	Fuel Pressure Regulator, '87	\$119.00
928 110 198 04	Fuel Pressure Regulator, '88-95	\$89.00
928 110 198 ADJ	Adj. Fuel Pressure Regulator, '88-95	\$195.00
928 110 202 00	Fuel Damper, '80-84 (on front)	\$110.00
928 110 202 01	Fuel Damper, '87-95 (front)	\$154.00
928 110 220 00	Vacuum hose, '87-95 (to Venturi)	\$20.00

928 110 224 00	Vacuum Hose, '87-95 (to plenum)	\$22.00
U928 110 230 00	Used Air Filter Top, '78-84	\$50.00
U928 110 230 02	Used Air Filter Top, '85/86	\$75.00
U928 110 230 06	Used Air Filter Top, '87-91	\$75.00
928 110 243 02	Intake Boot, '85-86	\$26.00
928 110 248 01	Intake T/B Boot, '78-84	\$24.00
928 110 248 03	Intake T/B Boot, '85-86	\$14.00
911 110 264 00	Cold Start Base, '78-79	\$5.00
928 110 269 01	Fuel Line, '85/86 (to damper)	\$25.00
928 110 272 04	Intake Tube, '78-84, '87-91	\$56.00
928 110 273 00	Y Vacuum Fitting	\$4.00
928 110 330 03	Intake Manifold Gasket, '78-84	\$4.00
928 110 343 00	Intake Boot, '85-86 (8 required)	\$10.00
928 110 347 00	Intake Boot, '85-86 (2 required)	\$18.95
AIR FILTER STRAPS		
928 110 363 01	Air Filter Strap, '78-84	\$34.50
928 110 363 06	Air Filter Strap, '85-95	\$36.50
928 110 398 00	Rubber Injector Sleeve, '78-79	\$3.00
928 110 399 02	Fuel Injector Sleeve, '78-79	\$9.50
928 110 403 00	Engine Badge, '78-84	\$14.00
928 110 432 00	Valve Cover Hose, '85-86	NLA
928 110 432 01	Vent Hose Valve Cover, '87-95 rear	\$22.00
928 110 439 00	Distribution Piece, '78-79 inj.	\$12.00
928 110 441 02	7 Way Vacuum Piece	\$24.00
928 110 441 03	5 Way Vacuum Piece	\$12.00
INTAKE MANIFOLD GASKETS		
928 110 568 00	Intake Manifold Gasket, '86	\$59.00
928 110 580 02	Intake Manifold Gasket, '87-95	\$20.00
930 110 602 01	Fuel Pressure Damper, '87-95L	\$119.00
928 110 626 01	Throttle Body Cable, '87-95	\$30.00
928 110 633 00	Intake Manifold Hose, '87-95	\$21.00
928 110 637 04	Gasket Intake, '87-95	\$4.50
928 110 694 01	Seal Ring for intake bolts '87-95	\$4.50

928 110 713 01	Intake Side Cover Gasket, '87-95	\$15.00
928 110 714 01	Intake Side Cover Gasket, '87-95	\$15.00
U928 110 906 00	Used Cis Fuel Distributor	\$350.00
928 110 906 X	Rblt CIS Fuel Distributor Exchange	\$650.00
944 111 205 00	Manifold Gasket, '85-95 (at head)	\$16.00
999 512 348 02	Clamp Intake Boot #40-60	\$2.00
928 605 101 00	Thermo-Time Switch, '80-84	\$75.00
928 606 102 02	Auxiliary Air Valve, '78-84	NLA
U928 606 102 02	Used Auxiliary Air Valve, '78-84	\$50.00
911 606 107 01	Cold Start Injector	\$169.00
CONTROL PRESSURE REGULATOR - CIS		
928 606 109 02	Warm Up Regulator #053	\$649.00
U928 606 109 02	Used Warm-Up Reg, '78-79.5 053	\$125.00
928 606 109 03	Warm Up Regulator 5 Speed #063	\$351.00
U928 606 109 03	Used Warm Up Reg 5 Speed #063	\$125.00
944 606 113 01	Throttle Switch	\$99.00
944 606 115 00	Impulse Sensor (flywheel)	\$195.00
AIR FLOW METERS		
928 606 121 01	Air Flow Meter, '80	NLA
U928 606 121 01	Used Air Flow Meter, '80	\$200.00
928 606 121 02	Air Flow Meter, '81-84	\$495.00
U928 606 121 02	Used Air Flow Meter, '81-84	\$200.00
928 606 125 01	Temp Sender, II-83-84	\$32.00
928 606 126 00	Injection Temp Sender, '85-91	\$41.00

911 606 141 00	Anti Knock Sensor, '87-90	\$66.00
MASS AIR SENSORS		
928 606 141 00	Mass Air Sensor, '85-95	NLA
U928 606 141 00	Used Mass Air Sensor, '85-95	\$250.00
928 606 141 LX	Mass Air Sensor, '85-95 (rebuilt)	\$395.00
928 110 901 00	Screen for Mass Air Sensor	\$11.00
928 606 149 00	Fan Temp Switch, '87-95	\$59.00
928 606 161 00	Idle Stabilizer, '85-86	\$139.00
928 606 161 01	Idle Stabilizer Valve, '87-95	\$295.00
928 606 217 00	Thermo Switch, '85-95	\$30.00
FUEL INJECTION COMPUTERS		
928 618 123 02	Fuel Injection Brain, '84-86 Euro	\$1,635.00
U928 618 123 02	Used LH Brain, '84-86 Euro	\$650.00
U928 618 123 04	Used LH Brain, '85-86	\$650.00
928 618 123 04R	Fuel Injection Brain, '85-86 (rebuilt)	\$895.00
928 618 123 10R	Fuel Injection Brain, '87-88 (rebuilt)	\$895.00
928 618 123 11R	Fuel Injection Brain, '87-88 (rebuilt)	\$895.00
928 618 123 13R	Fuel Injection Brain, '89-90 (rebuilt)	\$895.00
928 618 123 25R	Fuel Injection Brain, '91 AT (rebuilt)	\$895.00
928 618 123 26R	Fuel Injection Brain, '91 5sp (rebuilt)	\$895.00
928 618 123 30R	Fuel Injection Brain, '92-95 (rebuilt)	\$895.00
928 618 123 NU	Fuel Injection Brain Core	\$357.00
999 689 001 00	Rubber Mount for Fuel Damper	NLA
999 702 153 40	Rubber Bushing for Fuel Rail	\$2.50



Mass Airflow Sensor

S4 Throttle Body

Airflow Sensor 1980-84 USA

Fuel Injector



Fuel Injection Computers

The '85-95 928 all use LH engine management with two computers—one for the injection, and one for spark. The injection brain does fail on occasion, and either the car does not run or the injectors can be heard to pulse wildly when an attempt is made to start the car. The hot wire mass airflow sensor under the air filter housing can also degrade over time and send an incorrect voltage signal to the injection brain, resulting in an overly rich running condition or poor acceleration. One "test" of the mass air is to unplug it and see if the car runs better at idle. For several years now, we have been able to have both of these units rebuilt, and they are offered with a one year warranty.

QUESTIONS?
CALL 714-632-9288

SPARK PLUGS			
WR44 77	Bosch Platinum + 4, '84-95	\$6.95	
WR7D C	Bosch Copper, '85-91	\$2.00	
WR8D C	Bosch Copper, '80-84	\$1.75	
WR8D P	Bosch Platinum, '80-84	\$4.00	
WR7D PO	Bosch Platinum, '85-91	\$4.00	
WR7D TC	Bosch, '93-95 Spark Plug	\$5.80	
CAPS			
928 602 211 01	Distributor Cap, '85-95	\$49.00	
928 602 213 00	Ignition Rotor, '85-95	\$39.00	
928 602 902 00	Distributor Cap, '78-84	\$76.00	
928 602 904 03	Ignition Rotor, '78-84	\$12.00	
944 602 251 00	Euro Distributor Cap, '84-85	\$42.00	
944 602 906 01	Euro Twin Distributor Rotor	\$38.00	
928 602 541 00	Euro Dual Distributor Belt	\$25.00	
WIRE SETS			
928 609 061 EL	Plug Wire Set, '78-84 (economy)	\$75.00	
928 609 061 ST	Plug Wire Set, '78-84	\$169.00	
928 602 060 EL	Plug Wire Set, '85-86 (economy)	\$149.00	
928 602 060 ST	Plug Wire Set, '85-86	\$295.00	
928 602 061 EL	Euro Plug Wire Set, '84-86 (economy)	\$129.00	
928 602 061 ST	Euro Wire Set, '84-86	\$249.00	
928 602 062 EL	Plug Wire Set, '87-88 (economy)	\$149.00	
928 602 062 ST	lug Wire Set, '87-88 P	\$295.00	
928 602 063 EL	Plug Wire Set, '89-91 (economy)	\$149.00	
928 602 063 ST	Plug Wire Set, '89-91	\$295.00	

COILS			
928 602 039 00	Coil Wire, '85-88	\$42.00	
928 602 040 00	Coil Wire, '89-95	\$34.00	
928 609 061 07	Coil Wire, '78-84	\$43.00	
944 602 115 00	Ignition Coil, '85-88	\$59.00	
U944 602 115 00	Used Ignition Coil '85-88	\$20.00	
928 602 116 00	Ignition Coil '89-95	\$70.00	
928 602 503 00	Ignition Coil, '78-84	\$68.00	
928 602 801 00	Coil Cover cap '85-95	\$11.00	
928 602 311 00	Spark Plug Connector '85-95	\$28.00	
U928 602 311 00	Used Spark Plug Connector '85/9	\$15.00	
928 602 559 00	Spark Plug wire clip '85-86	\$3.00	
U928 602 702 02	Used TSZ Ignition Control Unit '78-84	\$175.00	
928 602 706 01	Ignition Control Unit '85-95	\$105.00	
U928 602 706 01	Used Ignition control '85-95	\$50.00	
928 602 907 00	Distributor Wire '78-84-green	\$96.00	
928 609 105 03	Spark Plug Connector '78-84	\$15.00	
U928 609 105 03	Used Spark Plug Connector '78-4	\$7.00	
U928 618 124 05	Used Ignition EZK unit '85-86	\$150.00	
U928 618 124 11	Used Ignition EZK '87	\$400.00	
U928 618 124 15	Used Ignition EZK '88-90	\$400.00	
U928 618 124 16	Used Ignition EZK '89 GT	\$400.00	
46 905 109	Series Resistor 0.4	\$28.00	
46 905 109 A	Series Resistor 0.6	\$28.00	
U928 602 032 02	Used Distributor '78-79	\$100.00	
928 602 103 00	Distributor seal '78-84	\$5.00	



We offer spark plug wires with and without the spark plug connector which simply screws onto a stud crimped on the wire. The wires are high quality US manufactured, and use the original OEM connectors swedged onto them. The set without spark plug connectors is sold as the economy. Examine your plug connectors to determine which you will need. Both sets include coil wires and are exactly what we use on our own vehicles, including the race cars.

CLUTCH KITS		
928 116 911 00	Clutch Kit, '80-86	\$695.00
928 116 911 01	Clutch Kit, '87-88	\$895.00
928 116 911 02	Clutch Kit, '89-91	\$895.00
928 116 011 23	Clutch Disc 1, '78-79	\$229.00
928 116 011 24	Clutch Disc 2, '78-79	\$229.00
928 116 011 35	Clutch Disc 1, '80-86	\$182.00
928 116 011 36	Clutch Disc 2, '80-86	\$175.00
928 116 013 23	Clutch Disc, '87-95	\$159.00
PRESSURE PLATES		
928 116 031 03	Pressure Plate, '78-79	\$359.00
U928 116 031 03	Used Pressure Plate, '78-79	\$150.00
928 116 031 26	Pressure Plate, '80-86	\$330.00
U928 116 031 26	Used Pressure Plate, '80-86	\$150.00
928 116 004 10	Pressure Plate, '87-88	\$495.00
928 116 004 12	Pressure Plate, '89-91	\$595.00
928 116 004 16	Pressure Plate, '92-95	\$595.00
928 116 033 03	Intermediate Plate, '78-79	\$575.00
U928 116 033 03	Used Intermediate Plate, '78-79	\$250.00
928 116 033 22	Intermediate Plate, '80-83	\$695.00
U928 116 033 22	Used Intermediate Plate, '80-83	\$400.00
928 116 033 26	Intermediate Plate, '84-86	\$986.00
U928 116 033 26	Used Intermediate Plate, '84-86	\$425.00
928 116 075 01	Ball Pivot for Clutch Arm	\$30.00
RELEASE BEARINGS		
928 116 085 08	Release Bearing, '87-95	\$169.00
928 116 085 24	Release Bearing, '78-86	\$179.00
U928 116 085 24	Used Release Bearing, '78-86	\$50.00
928 116 087 13	Guide Tube, '78-86	\$65.00

928 116 087 15	Guide Tube, '87-89	\$65.00
928 116 087 16	Guide Tube, '92-95 (and updated '87+)	\$78.00
U928 116 143 00	Used Ring Gear 5 Speed, '78-79	\$100.00
928 116 145 03	Ball Cup Bushing for Fork	\$15.00
928 102 111 02	Pilot Bearing	\$15.00
HYDRAULICS		
928 116 237 18	Clutch Slave Cylinder, '78-82	\$65.00
928 116 237 19	Clutch Slave Cylinder, '83-86	\$65.00
928 116 237 22	Clutch Slave Cylinder, '87-95	\$78.00
U928 116 401 15	Used Upper Bell housing, '78-86	\$100.00
U928 116 402 00	Used Upper Clutch Cover, '87-95	\$200.00
U928 116 411 12	Used Lower Bell Housing, '78-82	\$75.00
U928 116 412 01	Used Lower Bell housing, '83-88	\$75.00
928 116 425 00	Cap Plug for Clutch Cover	\$3.30
928 116 427 02	Clutch Housing Seal	\$10.00
U928 116 832 07	Used Release Arm, '78-91	\$50.00
928 116 832 09	Release Arm, '78-95	\$123.00
999 181 021 50	Clutch Fluid Hose Feed Blue	\$22.00
U928 421 235 16	Used Central Shaft, '79-95	\$125.00
928 423 077 07	Clutch Fluid Hose, '87-95	\$136.00
928 423 173 06	Clutch Master, '78-95 (with 10" booster)	\$75.00
928 423 177 01	Clutch Hose (with 9" booster)	\$95.00
928 423 177 03	Clutch Hose (with 10" booster)	\$45.00
928 423 193 00	Clutch Master, '78 (with 9" booster)	\$95.00
928 423 199 01	Clutch Slave Flex Line, '80-82	\$22.00
928 423 210 03	Brake and Clutch Pedal Pad (5 Speed)	\$5.00
928 423 311 06	Clutch Pedal, '78-86	\$260.00
928 423 311 09	Clutch Pedal, '87-95	\$195.00
U922 421 051 01	Used Clamping Sleeve	\$50.00



The two disc clutch '78-86 uses an intermediate plate which floats between the two discs. It is very important that after the assembly is bolted to the flywheel that the clutch arm be pulled back to release the tension of the pressure plate and the intermediate plate be pried back away from the flywheel. There are three "windows" where you can see the flat springs, and this is where you pry back to move the center ring away from the flywheel. The short clutch shaft with the splines which goes from the pilot bearing through the clutch assembly needs to be carefully examined for wear in the splined area where the clutch discs ride before installing new discs. If there is a noticeable step in the splines, the new, thicker disc can hang up on the step and cause the clutch to drag or not disengage completely.

The basic clutch kit includes the pressure plate, release bearing (throw out bearing), and the friction disc or discs. It is recommended that the pilot bearing and clutch arm white plastic socket also be changed. The '78-86 may also need the intermediate plate.

When bleeding the clutch, unbolt the slave cylinder from the clutch housing. Press the rod into the slave cylinder, against the stop, and release again slowly. This will force back the remaining air into the clutch line or master cylinder tank. I have personally used this method with great results.

Most clutch master cylinder failures are the result of a bad seal and piston. Since the body is cast iron, there is seldom a problem with it. You can take the piston and seal from a new cylinder and insert it into the old body from inside the car and save many hours of labor. Always check the condition of the old cylinder prior to installation of the new parts.

CLUTCHES AND TRANSMISSIONS

CHANGING THE BALL CUP ON THE SHIFTER FOR MORE PRECISE SHIFTING. **By Kurt Gibble**

These are directions for replacing the shifter bushing that's located on the top of the torque tube just behind the bell housing (and engine). The directions are exact for an '87 S4 (s/n 0181). This is usually the culprit in fore/aft shifter sloppiness (see Panorama May '97), although Dave Cooley has noted that sometimes the coupler just in front of the trans can also be the problem. The procedure isn't too difficult, but you can't be ham-fisted.

- Go in passenger footwell, remove lower fuse panel (2 10mm nuts) and disconnect the O2 sensor (thick gray wire with black plug). Push out the grommet and wires through the hole in the tunnel.
- Pull up shifter leather boot—pull up the front of the plastic frame and it'll snap out of the console. Pull up rubber boot. Look at the shifter and memorize. Remove the 2 clips and the shifter rod pins and remove the shifter, springs, bushings, washers, and figure eight piece.
- Support car on jack stands—no loss in having it high.
- Optional step: Use a digital level to measure the position of the two shifting rod pins. You could also measure the shifter before taking it out. (This is so we're sure to get the bushing spaced properly.)
- Remove Exhaust. Spray 13mm nuts to manifolds. Place support (jack) on cross pipe in front of rear muffler. Remove two 13mm bolts and nuts on rear muffler, one of same on each intermediate, 17mm center support hanger behind the cat. Remove the nuts on the exhaust manifolds. Lower rear a couple of inches, then remove the bolts from the manifolds, lower the front while feeding the O2 sensor through the heat shields. (If you're near 60K, you might want to change the O2 sensor while the exhaust is down.)
- Remove the center and two front heat shields—ten 8mm bolts total. On the center, I removed the exhaust hanger to get it down. Remove the front tunnel brace to which the heat shields mount (four 13mm bolts).
- Pry the shifting guide rod cup off of the ball on top of the torque tube. I used a Stanley wrecking bar—the gently curved end. Others have used screwdrivers and motorcycle tire irons.
- Gently pull the shifting guide rod to the side and down—mine went more easily to the driver's side. There's a bearing welded to the top of the torque tube (Jim Stadter) in which the guide tube rides, and you probably don't want to break or bend this—just a guess on my part.

928 300 005 03	G 28/03 Rebuilt Trans, '78-79	\$2,495.00
U928 300 005 03	Used 28/03 5sp Trans, '78-79	\$750.00
928 300 005 05	G 28/05 Rebuilt Trans, '80-82	\$1,995.00
928 300 005 07	G 28/07 Rebuilt Trans, '83-84	\$2,495.00
928 300 005 08	G 28/08 Rebuilt Trans, '83-84	\$2,495.00
928 300 005 10	G 28/10 Rebuilt Trans, '85-86	\$2,495.00
U928 300 005 10	Used 28/10 5sp Trans 85-86	\$2,000.00
928 300 005 13	G 28/13 Rebuilt Trans, '87-88	\$2,495.00
U928 300 005 13	Used 28/13 5 Spd. Trans, '87-88	\$2,500.00
U928 300 030 57	Used 28/55 5 Spd. Trans, '90-95	\$4,500.00
TC1	5 Speed Trans Core, '78-84	\$750.00
TC2	5 Speed Trans Core, '85-89	\$1,000.00

GASKETS

928 300 901 01	Gasket Set for 5 Speed	\$85.00
928 301 393 07	Trans cover gasket	\$5.00
U928 302 036 00	Used Counter Shaft, '78-86	\$75.00
928 302 152 06	Input Shaft Bearing, '78-84	\$49.50
928 302 152 10	Input Shaft Bearing, '85-86	\$55.00
928 302 242 00	Dog Teeth, '78-84 (1st-4th)	\$195.00
928 302 301 31	Synchronizer, '78-84 (1st)	\$90.00
928 302 302 31	Synchronizer, '78-84 (2nd and 3rd)	\$59.00
928 302 302 33	Synchronizer, '78-84 (4th)	\$79.00
928 302 304 31	Synchronizer, '78-84 (5th)	\$69.00
928 304 211 02	Synchronizer, '87-95 (reverse)	\$133.00
928 304 211 05	Synchronizer, '87-95 (4,5 '85-86 all)	\$126.00
928 304 211 12	Synchronizer, '87-95 1, 2, 3	\$215.00

REVERSE GEARS

928 302 026 07	Reverse Gear, '83-84	\$294.00
U928 302 026 07	Used Reverse Gear, '83-84	\$200.00
928 302 026 08	Reverse Gear, '78-82 (NLA)	NLA
U928 302 026 08	Used Reverse Gear, '78-82	\$200.00
928 302 305 08	Reverse Gear, '78-82	\$489.00
U928 302 305 08	Used Reverse Gear, '78-82	\$250.00
928 302 305 09	Reverse Gear, '83-84	\$548.00
U928 302 305 09	Used Reverse Gear, '83-84	\$250.00

915 302 315 01	Trans Stop Block, '78-84	\$42.00
915 302 316 01	Trans Brake Band, '78-84	\$7.50
928 302 318 01	Brake Band 2nd, '78-82	\$32.00
928 302 327 00	Anchor Block	\$15.00
928 302 411 01	Shifting Sleeve, '78-84 (1, R)	\$185.00
U928 302 411 01	Used Shifting Sleeve, '78-84 (1, R)	\$50.00
928 302 413 11	Shifting Sleeve, '78-82	\$329.00
U928 302 413 11	Used Shifting Sleeve, '78-82	\$75.00

GEARS

928 302 901 13	1&2nd Gear Set, '78-82	\$3,077.00
U928 302 901 13	Used 1&2nd Gear Set, '78-82	\$500.00
928 302 901 14	1&2nd Gear Set, '83-84	\$995.00
U928 302 901 14	Used 1&2nd Gear Set, '83-84	\$500.00
U928 302 901 18	Used 1&2nd Gear Set, '87-95	\$995.00
928 302 901 21	1&2nd Gear Set, '85-86	\$2,147.00
U928 302 901 21	Used 1&2nd Gear Set, '85-86	\$995.00
U928 302 905 08	Used 5th Gear Set, '78-79	\$500.00
U928 302 905 09	Used 5th Gear Set, '80-82	\$500.00
928 302 905 15	5th Gear Set, '83-84	\$995.00
U928 302 905 15	Used 5th Gear Set, '83-84	\$500.00
928 302 905 23	5th Gear Set 85-86	\$1,482.00
U928 302 905 23	Used 5th Gear Set, '85-86	\$750.00
928 302 905 33	5th Gear Set, '87-88	\$1,589.00
U928 302 905 33	Used 5th Gear Set, '87-88	\$750.00

RINGS AND PINIONS

928 302 911 26	Ring and Pinion, '78-82 2.72	\$995.00
U928 302 911 26	Used Ring and Pinion, '78-82 2.72	\$500.00
928 302 911 56	Ring and Pinion 85-86 2.20	\$995.00
U928 302 911 56	Used Ring & Pinion, '85-86 2.20	\$500.00
999 059 027 00	Differential Bearing	\$51.00

LIMITED SLIP PARTS

U928 332 052 04	Used Limited Slip Diff., '78-82	\$650.00
U928 332 052 20	Used Limited Slip Diff., '83-89	\$950.00
928 375 045 16	Trans Mount, '80-95	\$72.00
U928 375 045 16	Used Trans Mount, '80-95	\$30.00



5 Speed Transmission



Ring and Pinion

- Reverse Gear
- Input Bearing
- Slider
- Engaging Teeth
- Syncro Ring

TORQUE TUBES		
960 421 012 07	Rebuilt Torque Tube, '83-95 AT	\$495.00
922 421 012 03	3 Spd. AT Torque Tube (rebuilt exch)	\$495.00
CTC	Torque Tube Core	\$300.00
123 270 00 98	Trans Service Kit Auto 3 Spd.	\$35.00
960 307 901 01	Trans Service Kit, 4 Spd.	\$35.00
900 052 117 00	Converter Bearing, '78-82	\$30.00
900 052 122 00	Converter Bearing, '83-95	\$30.00
999 064 019 02	Trans Drain Plug	\$7.00
999 064 020 02	Trans Drain Plug with Magnet	\$12.00
960 116 042 00	Converter Drive Flange, '83-86	\$350.00
U960 116 042 00	Used Converter Flange, '83-86	\$150.00
960 116 042 02	Converter Drive Flange, '87-95	\$480.00
U960 116 042 02	Used Converter Flange, '87-95	\$200.00
U922 421 051 01	Used Clamping Sleeve, '78-95	\$50.00
922 421 101 04	Converter Drive Flange, '78-82	\$695.00
U922 421 101 04	Used Drive Flange, '78-82	\$250.00
U922 421 239 01	Used Clamping Sleeve	\$50.00
U922 421 255 00	Used Clamping Piece	\$45.00
922 116 101 01	Drive Plate at Trans, 3 Spd.	\$284.00
U922 116 101 01	Used Drive Plate at Trans, 3 Spd.	\$100.00
900 123 033 20	Crush Ring 10x14 Converter Drain	\$0.50
900 123 062 30	Crush Ring 10x14 AT Drain	\$0.50

TORQUE CONVERTERS

U123 250 010 2	Used Torque Converter 78-82	\$250.00
722 250 020 2	Torque Converter, '85-86	\$1,073.61
U722 250 020 2	Used Torque Converter, '85-86	\$500.00
722 250 050 2	Torque Converter, '83-85	\$1,132.00
U722 250 050 2	Used Torque Converter 83-85	\$500.00
722 250 060 2	Torque Converter, '87-91	\$1,395.00
U722 250 060 2	Used Torque Converter, '87-91	\$600.00
123 270 011 2	3 Spd. Transmission Oil Pan	\$182.73
U123 270 011 2	Used 3 Spd. Oil Pan	\$85.00
722 270 111 2	AT Transmission Pan, '86-95	\$216.00
722 270 250 7	AT Trans Valve Body, '83-86	\$995.00



Automatic Transmission

VALVE BODIES		
U722 270 250 7	Used Valve Body, '83-86	\$500.00
722 270 340 7	AT Trans Valve Body, '87-88	\$695.00
U722 270 340 7	Used Valve Body, '87-88	\$500.00
TRANSMISSIONS		
922 300 003 AV	Auto Trans 3 Spd. A22:01 (rebuilt)	\$1,995.00
U922 300 003 AV	3 Spd. AT Trans A22:01 (used)	\$750.00
960 300 004 00	4 Spd. Auto Trans, '83-84 (rebuilt)	\$1,995.00
U960 300 004 00	Auto Trans, '83-84 (used)	\$1,000.00
960 300 004 12	4 Spd. Auto Trans, 87-88 (rebuilt)	\$1,995.00
U960 300 004 12	Auto Trans, '87-88 (used)	\$1,250.00
U960 300 004 16	4 Spd Auto Trans, '89 (used)	\$1,500.00
960 300 004 DV	4sp Auto Trans, '85-86 (rebuilt)	\$1,995.00
U960 300 004 DV	Auto Trans, '85-86 (used)	\$1,000.00
960 300 004 FX	4 Spd Auto Trans, '89 (rebuilt)	\$1,995.00
AT1	Auto Trans Core, '78-82	\$500.00
AT2	Auto Trans Core, '83-86	\$750.00
AT3	Auto Trans Core, '87-89	\$1,000.00

HOSES

922 307 020 00	AT Trans Hose, '78-86 (intake RR)	\$89.00
960 307 020 01	AT Intake Hose (left)	\$72.00
922 307 021 00	AT Trans Hose, '78-86 (return LR)	\$65.00
960 307 021 02	AT Return Hose (right)	\$78.00
922 307 023 02	AT Trans Hose, '78-86 (intake rad.)	\$55.00
922 307 025 00	AT Trans Hose, '78-86 (rad. top)	\$115.00
960 307 031 04	4 Spd. Trans Pan A28:01	\$289.00
928 307 072 00	Trans Cooling Hose, '87-95	\$93.00
922 321 535 00	AT Trans Reservoir 3 Spd.	\$25.13
0 545 420 6	3 Spd. AT Back Up Switch	\$38.00
10 997 474 7	4 Spd. AT Pump Seal	\$9.25



- Transmission Service Kit
- Flex Plate at Flywheel
- Torque Converter
- Flex Plate at Torque Converter
- Valve Body
- Converter input Bearing

- Measure the distance from the cup to the rod and mark the orientation. Loosen the 17mm locking nut on the cup threads. How, you ask? Well, you might try to put a 22mm wrench on the cup to counter-hold the torque you apply with the 17mm open-end wrench. If you do, you'll probably twist the cup right off the threads—you can guess which you've been warned. I was able to grab the tube (back about three inches) with a "normal" pair of pliers and then squeeze those pliers with a channel lock to get enough grip. A channel lock won't go up in the tunnel, as the clearance is too small (the tube has to stay fairly high for this so that the narrow part of the pliers goes where the clearance is the smallest). Unscrew the cup while counting the threads.
- Put a little grease on the inside of the new cup and clean off the ball. Thread on the new cup the correct number of turns, orient it properly, and then measure the distance from the cup the correct number of turns; orient it properly, and then measure the distance from the cup to the rod and adjust it if you forgot how to count. Snug the 17mm nut. Place cup on top (Don't press on it yet) of the ball. Go in the car and measure the angle of the pins/shifter, or at least make sure things look aligned.
- Tighten 17mm lock nut—it really doesn't have to be too tight. Even if it does work loose, the cup won't be able to unscrew, so I don't see a big problem looming (YMMV). Push the cup onto the ball (my guess is the plastic will give more easily on a warm day). I used the other end (right-angle end) of my Stanley wrecking bar by pivoting it against a small piece of metal (aluminum, of course) on the top of the tunnel. Worked really nicely.
- Reassemble shifter. The trick to putting this in is finding some way to compress the springs so you can get the clicks on. The springs fit tightly onto the shift level so there's not a lot of room. I compressed the springs in a vise and then wrapped four turns of No. 26 bare copper wire around the spring in two places. Then install and cut the copper wire. Nylon thread may work (even dental floss) and, as some of the copper remained, the nylon may be better here.
- Replace cross member, heat shields, and exhaust, remembering to feed the O2 sensor wires (and install the grommet) before the heat shields are tightened, and especially before the exhaust is entirely up.

- Shift frame Under Boot
- 5 Speed Shift Lever
- Shifter Boot Automatic
- Shift Indicator Automatic



- Torque Tube
- Central shaft
- Carriers
- Bearings
- Vibration Damper



- 5 Speed Linkage with Forward Ball Socket
- Clutch Pedal
- Rear Shift Rod Coupler
- Clamping Sleeve
- Rear Shift Coupler
- Clamp Bolt
- Brake Pedal



- Carbon Look T Handle



- Leather Shift Boot

CENTRAL TUBES

928 421 012 13	5 Spd. Torque Tube, '78 (early rebuilt)	\$495.00
928 421 012 14	5 Spd. Torque Tube, '78-80 (rebuilt)	\$495.00
928 421 012 26	5 Spd. Torque Tube, '80-95 (rebuilt)	\$495.00
960 421 012 07	4 Spd. Torque Tube, '83-95 (auto.)	\$495.00
CTC	Central Tube Core	\$300.00
928 421 235 16	Central Clutch Shaft, '79-95	\$179.00
931 421 240 00	Clamping Bolt	\$8.95
928 423 023 04	Throttle Cable, '85-86	\$122.00
928 423 023 06	Throttle Cable, '78-84	\$65.00
928 423 023 08	Throttle Cable, '87-95	\$68.00
928 423 041 01	Pressure Control Cable, '83-84	\$395.00
U928 423 041 01	Used Pressure Cable, '83-84	\$200.00
928 423 041 02	Pressure Control Cable, '85-86	\$321.00
U928 423 041 02	Used Pressure Cable, '85-86	\$150.00
928 423 041 06	Pressure Control Cable, '87-95	\$340.00
U928 423 041 06	Used Pressure Cable, '87-95	\$150.00
928 423 071 03	Pressure Control Cable, '78-82	\$109.00
U928 423 071 03	Used Pressure Cable, '78-82	\$50.00
911 423 147 00	Ball Socket-Shift Cable	\$5.00
U928 423 311 06	Used Clutch Pedal, '78-86	\$125.00
U928 423 311 09	Used Clutch Pedal, '87-95	\$100.00
928 424 005 01	Forward Shift Ball Socket	\$84.00
928 424 029 00	Rear Shift Rod Coupler	\$78.00
U928 424 029 00	Used Rear Shift Coupler	\$35.00
922 424 033 01	3 Speed Auto Shift Cable	\$205.00
U922 424 033 01	Used 3 Speed AT Shift Cable	\$85.00

SHIFTER BOOTS

928 424 07BLACK	Leather Shift Boot-5 Speed, '80-90	\$49.00
928 424 07BLUE	Leather Shift Boot-5 Speed, '80-90	\$49.00
928 424 07BROWN	Leather Shift Boot-5 Speed, '80-90	\$49.00
928 424 07BURGUNDY	Leather Shift Boot-5 Speed, '80-90	\$49.00
928 424 105 06	Shift Knob, '78-79-5 Speed	NLA
928 424 139 02	Shift Boot, '78-79-5 Speed	\$49.00
928 424 181 03	Insulation Boot-5 Speed, '78-84	\$12.95
928 424 181 04	Insulation Boot-5 Speed, 85-95	\$12.95
928 426 033 03	Shift Cable, '83-86	\$219.00
U928 426 033 03	Used Shift Cable 83-86	\$100.00
928 426 033 04	Shift Cable, '87-95	\$215.00
U928 426 033 04	Used Shift Cable, '87-95	\$100.00
928 426 075 01	AT Shift Handle for '85-95	\$395.00
U928 426 075 01	Used Shift Handle, '85-95	\$200.00
U928 552 091 02	Used 3 Spd. Shift Indicator, '78	\$65.00
U928 552 091 04	Used 3 Spd. Shift Indicator, '79-82	\$75.00
U928 552 091 20	Used Shift Indicator, '83-95	\$85.00
CARB ON	Carbon Fiber Look T Handle	\$49.00

Ordering Information and Company Policies

TO PLACE AN ORDER:

PHONE: We are open Mon-Fri, 8:00 am to 5:00 pm Pacific time. Our toll free order line is 800-634-6117. Technical assistance can be reached at 714-632-9288.

FAX: You may fax your order to 714-632-9328. Be sure to include accurate descriptions, as well as shipping information, payment terms, and a phone number where you can be reached.

MAIL: Please use our shipping address to mail your order, and be sure to include your phone number.

E-MAIL: Our e-mail address is mr928@928intl.com, or you can reach us at our website at www.928intl.com.

PAYMENT TERMS: We gladly accept Visa, MasterCard, American Express, and Discover Card. Please include the cardholder name, billing address, and expiration date. We also accept cashiers checks, personal checks, and money orders. Personal checks may take up to 10 business days to clear. Wire funds transfers may be sent to Wells Fargo Bank 2535 N. Tustin, Orange, CA 92865. Account number 0940-623630 ABA #16-24, Rte# 121000248. Phone 714-998-8402.

PRICES: All prices are subject to change without prior notice and are FOB Anaheim, CA. We reserve the right to correct any typographical errors.

SALES TAX: Sales tax will be charged to all transactions in the state of California with the exception of resale establishments with a current resale card on file.

SHIPPING: 928 International uses UPS, Fed Ex and US mail. All shipments over 125 lbs. or dimensionally oversized will be shipped by deferred air freight or truck. Most orders are shipped same day. In the event an item is back-ordered, you will be given the option of split shipments.

WARRANTY: All new and rebuilt parts carry a one year limited warranty. Used parts come with a One Year warranty. All warranties cover only the part and do not cover any installation charges or damage to other parts. Failure of a part due to misuse or improper installation is not covered under this warranty.

CORES: All cores must be in their original packaging and must be in rebuildable condition. Broken shafts, housings, and incomplete or dismantled cores may not be suitable for a full refund.

RETURNS OR EXCHANGES: If for any reason you need to return or exchange an item, first call 928 International to obtain a Return Authorization Number. Next, carefully package your return and include a copy of the original invoice. Please print the Return Authorization Number on the outside of the package as well as on the invoice copy. Insure for full value. All items must be in the original packaging and in sellable condition. Books, tools, electrical items, and mounted wheels are not returnable. All returned items are subject to a 25% restocking charge. No returns after 30 days.

INTERNATIONAL ORDERS: All international orders must be pre-paid in U.S. funds via wire transfer to our bank. All international orders are shipped via air freight or parcel post. In order to calculate the shipping costs, we need to pack the order to determine size, weight and number of boxes. All international orders are final sales and non-returnable and non-refundable.

[HTTP://www.928intl.com](http://www.928intl.com)

CORE RETURN GUIDELINES: TO HELP SPEED UP THE RETURN PROCESS OF YOUR CORE, PLEASE NOTE THE FOLLOWING GUIDELINES:

1. All cores must be returned completely assembled with no missing parts.
2. All cores are subject to inspection before credit can be issued.
3. Returned cores must be of the same type as the rebuilt unit purchased.

Note: Water pump cores are not rebuildable if the impeller has touched the housing. If your impeller has made contact with the housing, your core charge will not be refunded. If you have any questions, please contact our customer service department.



2900 East Miraloma Avenue D
Anaheim, California 92806
Telephone: 714/632-9288
Facsimile: 714/632-9328
E-mail: mr928@928intl.com
<http://www.928intl.com>

- ▶ 018 Sport steering wheel with elevated hub
- 020 Speedometer with 2 scales KPH/MPH
- 026 Activated charcoal canister
- 027 Version for California
- 139 Seat heating – left
- 157 Oxygen sensor and catalyst
- 158 Radio “Monterey”– 86 “Reno”– 87
- 195 Prepared for cellular telephone
- 197 Higher amperage battery
- 219 Differential
- 220 Locking differential
- 221 Porsche-locking differential
- 249 Automatic transmission
- 261 Passenger side mirror – electric – plain
- 286 High intensity windscreen washer
- 298 Prepared for unleaded fuel, manual transmission
- 302 Type designated on rear end
- 331 AM/FM Cassette w/2 door speakers
- 340 Seat heating – right
- 341 Central locking system
- 347 Platinum anodized wheels
- 383 Sport seat – left
- 387 Sport seat – right
- 393 Forged wheel 8J/9Jx16
- 395 Light metal wheels – forged
- 400 Pressure cast wheels
- 401 Light metal wheels
- 406 50 year anniversary car 1982
- 409 Sport seats left and right leather
- 410 Sport seats left and right leatherette/cloth
- 415 Wider rear track
- 418 Protective side mouldings
- 423 Cassette container and coin box
- 437 Comfort seat left
- 438 Comfort seat right
- 454 Automatic speed control
- 455 Wheel locks
- 462 Sekuriflex windshield
- 462 Special model “Weissach” 1982
- 467 Driver side mirror, convex
- 468 Graduated tint windshield, green side glass
- 471 Sport group 1
- 474 Sport shock absorbers
- 481 5 speed manual transmission
- 490 Hi-Fi sound system
- 494 Amplifier system
- 498 Without rear model designation
- 513 Lumbar support – right seat
- 528 Passenger side mirror convex
- 533 Alarm system
- 537 Left seat with positrol and lumbar
- 538 Right seat with positrol and lumbar
- 553 Version for USA
- 562 Airbag driver’s side
- 563 Airbag passenger’s side
- 567 Windshield green graduated tint
- 570 High output air conditioner
- 573 Air conditioner
- 576 Without rear fog light
- 586 Lumbar support – left seat
- 593 Antilock brake system
- 595 Rear spoiler painted to match body
- 637 Sport Group “Club Sport”
- 639 928 GT
- 650 Sunroof
- 691 CD-Player “CD-1” with radio
- 692 Remote CD changer (6-disc)
- 900 Tourist delivery
- 981 All leather lining
- C03 California type car



FAX: 714-632-9328

Sold To: *(Billing Address)*

Ship To: *(If Different Address)*

Name: _____
 Address: _____
 City: _____ State: _____ Zip: _____
 Country: _____
 Daytime Telephone: _____ / _____
 Evening Telephone: _____ / _____
 Car Year: _____ Manual: Automatic:
 Vin Number: _____ E-Mail: _____

Name: _____
 Address: _____
 City: _____ State: _____ Zip: _____
 Country: _____
 Daytime Telephone: _____ / _____
 Evening Telephone: _____ / _____

Part number	Page #	Description	Qty.	Item price	Total

Method of payment *(Please do not send cash)*



C.O.D. *(Cash, money order or cashier's check)* VISA *(13 or 16 digits)* AMERICAN EXPRESS *(15 digits)*
 CHECK OR MONEY ORDER MASTERCARD *(16 digits)* DISCOVER *(16 digits)*

Name: _____
 Expiration Date: _____
 Card Number: _____
 Signature: _____

**Freight and Sales Tax
 will be added to all
 applicable orders**

USED PARTS NOW HAVE A 12 MONTH WARRANTY

STEERING RACKS		
928 347 010 24	Rebuilt Steering Rack, '78-81	\$395.00
928 347 010 27	Rebuilt Steering Rack, '82-95	\$395.00
928 347 779 03	Steering Rack Bushing	\$18.00
SRC	Steering Rack Core	\$300.00
928 347 191 03	Steering Rack Boot	\$15.00
900 123 042 20	Crush Ring 14x18 for Steering	\$1.50
928 347 021 04	Steering Joint Knuckle at Rack	\$117.00
U928 347 021 04	Used Steering Joint Knuckle	\$50.00
928 347 031 01	Tie Rod Assembly, '78-86.5	\$70.00
928 347 031 07	Tie Rod Assembly, '86.5-95	\$74.00
928 347 329 00	Steering Rack Stop, '78-81	\$12.00
928 347 329 04	Steering Rack Stop, '82-95	\$14.00
928 347 322 02	Tie Rod End	\$39.00
LEATHER WHEEL COVERS		
928 347 04BLACK	3 Spoke Steering Wheel Kit	\$59.00
928 347 04BROWN	3 Spoke Steering Wheel Kit	\$59.00
928 347 05BLACK	4 Spoke Steering Wheel Kit	\$59.00
928 347 05BLUE	4 Spoke Steering Wheel Kit	\$59.00
928 347 05BROWN	4 Spoke Steering Wheel Kit	\$59.00
928 347 05BURGUNDY	4 Spoke Steering Wheel Kit	\$59.00
928 347 05TAN	4 Spoke Steering Wheel Kit	\$59.00
U928 347 084 01	Used 3 spoke steering wheel	\$150.00
U928 347 084 02	Used 4 Spoke Steering Wheel	\$250.00
U911 347 859 07	Used Steering Wheel Pad	\$125.00
928 347 089 AX	Rebuilt Steering Pump, '91-95	\$269.00
▲		
HOSES		
928 347 089 X	Rebuilt Steering Pump, '85-90	\$269.00
U928 347 093 01	Used Steering Shaft with Upper Joint	\$150.00
928 347 099 00	Horn Contact	\$15.00
U928 347 431 05	Used Power Steering Pump, '78-84	\$50.00
928 347 431 EX	Rebuilt Steering Pump, '78-84	\$275.00
928 347 921 00	Seal Kit, Power Steering Pump, '79-84	\$25.00
STEERING COLUMNS		
928 347 739 02	Steering Bearing Support Ring	\$10.00
928 347 755 02	Ignition Lock Control Cam	\$5.00
928 347 791 00	Steering Shaft Bearing	\$27.50
928 347 913 00	Ignition Lock Seal	\$2.00
928 347 915 01	Ignition Lock with Key	\$99.00
928 347 919 00	Control Cam Kit with Screws	\$12.50
900 015 030 02	Bolts For Ignition Spacer	\$2.55
928 347 962 00	Spacer for Long Ignition Shaft	\$3.50
964 613 012 00	Ignition Electric Switch	\$55.00



- Steering Rack Boots
- Tie Rod Assembly
- Rear Sway Bar Drop Link
- Steering Rack
- Power Steering Pump

**IF YOU DON'T SEE IT
 CALL 714-632-9288**

SUSPENSION ARMS - FRONT

U928 341 017 04	Used '86.5 + Lower Control Arm	\$175.00
928 341 027 03R	Rebuilt Upper A-Arm (left), '78-86	\$295.00
928 341 027 37	Upper LF A-Arm, '86.5-95	\$870.00
U928 341 027 37	Used Upper A-Arm (left), '86.5-95	\$375.00
928 341 028 03R	Rebuilt Upper A-Arm (right), '78-86	\$295.00
CAC	A-Arm Core	\$50.00
928 341 028 37	Upper RF A-Arm, '86.5-95	\$870.00
U928 341 028 37	Used Upper RF A-Arm, '86.5-95	\$375.00
431 407 377 A	Up A Arm Ball Joint Boot	\$26.00
928 341 049 08	Lower Ball Joint, '86.5-95	\$110.00
928 341 049 12	Lower Ball Joint, '78-86.5	\$119.00
U928 341 057 03	Used Steering Knuckle, '78-81 LF	\$150.00
U928 341 057 13	Used Steering Knuckle, '82-85 LF	\$200.00
U928 341 057 16	Used Steering Knuckle, '87-88 LF	\$350.00
U928 341 057 17	Used Steering Knuckle, '89-95 LF	\$350.00
U928 341 058 03	Used Steering Knuckle, '78-81 R	\$150.00
U928 341 058 13	Used Steering Knuckle, '82-85 R	\$200.00
U928 341 058 16	Used Steering Knuckle, '87-88 R	\$350.00
U928 341 058 17	Used Steering Knuckle, '89-95 R	\$350.00
U928 341 065 02	Used Front Wheel Hub, '78-85	\$100.00
U928 341 065 10	Used Front Wheel Hub, '86-86.5	\$150.00
U928 341 066 04	Used Front Wheel Hub, '87-95	\$150.00
928 341 466 00	Ball Joint Eccentric, '78-86	\$75.00
U928 341 466 00	Used Ball Joint Eccentric	\$25.00
928 341 466 01	Ball Joint Eccentric, '87-95	\$33.00
U928 341 466 01	Used Ball Joint Eccentric	\$15.00
900 910 115 02	Locking Nut for Eccentric	\$1.10
928 341 671 02	50mm Wheel Stud	\$12.00
U911 341 673 00	Used Clamping Nut for Spindle	\$15.00

FRONT SHOCKS

928 343 055 04	Front Boge Shock, '78-86.5	\$98.00
928 343 055 06	Front Bilstein Shock, '78-95	\$250.00
928 343 055 07	Front Boge Shock, '86.5-95	\$125.00
U928 343 069 00	Used Sway Bar Link, '78-86 front	\$70.00
U928 343 069 01	Used Sway Bar Link, '86-95 (front)	\$70.00

*Requires 72mm studs.

U928 343 535 02	Used Front Boge Adj. Nut	\$25.00
U928 343 537 00	Used Threaded Ring Front Shock	\$10.00
U928 343 777 00	Used Ft Sway Bar U Bracket	\$6.50
928 343 793 04	Front Sway Bar Bushing	\$13.00
477 501 701	Wheel Spacer, '83-86 21mm*	\$62.12

WHEEL BEARINGS

999 053 050 00	Rear Wheel Bearing	\$95.00
999 059 067 00	Outer Wheel Bearing, '78-86	\$15.00
999 059 089 01	Outer Wheel Bearing, '86.5-95	\$15.00
999 059 090 00	Inner Wheel Bearing, '78-95	\$15.00
477 405 641	Wheel Bearing Seal, Front	\$5.00
U928 331 043 06	Used Left Lower Rear Control	\$250.00
U928 331 044 06	Used Right Rear Lower Control	\$250.00
U928 331 065 07	Used Rear Wheel Hub	\$100.00
U928 331 101 02	Used Upper Rear Control Arm	\$25.00
U928 331 641 01	Used Pivot Bolt	\$35.00
901 331 671 01	Wheel Stud, 72mm	\$9.00

REAR SHOCKS

928 333 051 08	Shock, '78-85 Boge Rear	\$110.00
928 333 051 12	Shock, Rear Bilstein	\$225.00
928 333 051 16	Shock, '86.5+ Boge Rear	\$110.00
928 333 059 01	Rear Sway Bar Link Left	\$45.00
U928 333 059 01	Used Rear Sway Bar Link Left	\$25.00
928 333 060 01	Rear Sway Bar Link Right	\$45.00
U928 333 060 01	Used Rear Sway Bar Link Right	\$25.00
U928 333 511 05	Used Threaded Sleeve Boge	\$20.00
U928 333 513 01	Used Front Bilstein Adj. Nut	\$20.00
U928 333 513 02	Used Adj. Nut Boge	\$15.00
U928 333 521 07	Used Rear Spring Seat Lower, '84-95	\$7.50
U928 333 522 08	Used Rear Spring Seat Upper, '84-95	\$15.00
U928 341 017 02	Used Lower Control Arm, '78-86	\$75.00



- ❶ - BILSTEIN Shock
- Upper A-Arms
- ❷ - Rear Wheel Bearing
- Rear Pivot Bolt
- ❸ - Lower Arm
- Upper A-Arm
- Rear Lower Arm
- ❹ - Rear Sway Bar Link
- Steering Knuckle
- Front Sway Bar Link

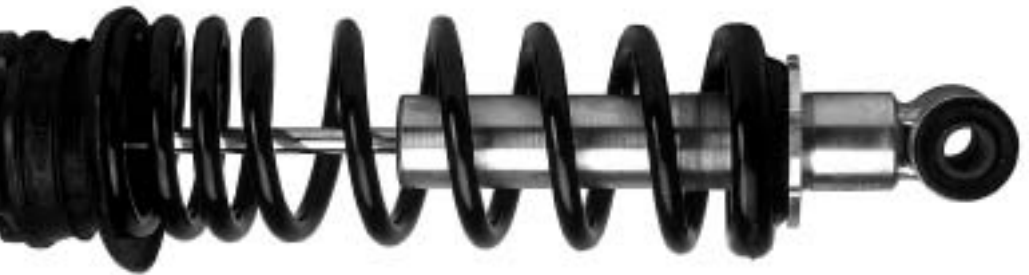
U928 332 033 30	Used Axle Shaft Assembly, '78-85	\$150.00
928 332 033 30AX	Rebuilt Axle, '78-84	\$249.00
U928 332 033 40	Used Axle, '85 FS860444 up	\$250.00
928 332 033 40AX	Rebuilt Axle, '85 from FS860444	\$249.00
U928 332 033 41	Used Axle, '86 up to GS860999	\$250.00
928 332 033 41AX	Rebuilt Axle, '86 up to GS860999	\$249.00
U928 332 033 44	Used Axle, '86.5-95 (44 tooth)	\$250.00
928 332 033 44AX	Rebuilt Axle, '86.5-95 (44 tooth)	\$249.00
930 332 297 00	Axle Joint Gasket	\$5.55
928 332 922 01	Axle Boot Kit, '78-81	\$28.00
928 332 924 01	Axle Boot Kit, '82-84	\$25.00
928 332 924 02	Axle Boot Kit, '85-91	\$20.00
AXLE	Axle Core	\$75.00
900 067 168 01	CV Bolt, '78-84 10x57	\$2.00
900 067 123 01	CV Bolt, '85-95 10x50	\$1.80



- Rear Axle
- CV Joint
- CV Boot Repair Kit



928 International EIBACH Progressive Rate Spring Set



BILSTEIN Shock with EIBACH Performance Spring

QUESTIONS?
CALL 714-632-9288

BRAKE ROTORS		
928 351 041 09	Front Brake Disc, '78-81	\$79.00
928 351 043 01	Front Left Brake Disc, '82-86.5	\$110.00
928 351 043 60	Front Left Brake Disc, '86.5-91	\$110.00
928 351 044 01	Front Right Brake Disc, '82-86.5	\$110.00
928 351 044 60	Front Right Brake Disc, '86.5-91	\$110.00
928 351 045 01	Front Left Brake Disc, '92-95	\$229.95
928 351 046 01	Front Right Brake Disc, '92-95	\$229.95
951 352 041 01	Brake Disc, '86.5-95 (rear)	\$110.00
944 352 041 02	Brake Disc, '78-86.5 (rear)	\$78.00
N 03 3 167 1	Brake Rotor Set Screw	\$0.87
U928 351 421 03	Used LF Brake Caliper, '87-91	\$200.00
U928 351 422 03	Used RF Brake Caliper, '87-91	\$200.00
928 351 423 03	Front Left Brake Caliper, '92-95	\$406.00
928 351 424 03	Front Right Brake Caliper, '92-95	\$406.00
U928 351 425 01	Used LF Brake Caliper, '78-81	\$50.00
U928 351 426 01	Used RF Brake Caliper, '78-81	\$50.00
U928 351 427 01	Used LF Brake Caliper, '83.5-86.5	\$50.00
U928 351 428 01	Used RF Brake Caliper, '83.5-86.5	\$50.00
930 351 927 00	Dust Cap for Brake Bleeder, '87-95	\$2.00
901 351 927 10	Rubber Cap for Bleeder	\$3.51
928 351 935 00	Brake Spring Front, '78-81	\$4.00
928 351 936 00	Brake Pin Front, '78-81	\$3.00
928 351 941 00	Caliper Rebuild Kit, '78-81 (front)	\$12.00
928 351 943 00	Caliper Rebuild Kit, '82-86.5 (front)	\$11.00
928 351 945 01	Front Bleeder Valve, '82-86	\$5.00
928 351 953 00	Brake Caliper Spring, '82-83	\$8.00
928 351 953 01	Brake Caliper Spring, '83-86.5	\$8.00
928 352 097 10	Hand Brake Shoe (4 Required)	\$35.00
U928 352 097 10	Used Hand Brake Shoe	\$15.00
U928 352 421 02	Used LR Brake Caliper, '86-95	\$200.00
U928 352 422 02	Used RR Brake Caliper, '86-95	\$200.00
U928 352 425 01	Used LR Brake Caliper, '78-86.5	\$50.00
U928 352 426 01	Used RR Brake Caliper, '78-86.5	\$50.00
928 352 941 00	Rear Caliper Rebuild Kit, '78-86	\$17.00
MASTER CYLINDERS		
928 355 011 04	Brake Master Cylinder, '78-83	\$195.00
928 355 011 23	Brake Master Cylinder, '84-86.5	\$229.00
928 355 011 24	Brake Master Cylinder, '86.5-95	\$249.00
U928 355 023 04	Used Brake Booster 9 in., '78-79	\$150.00
928 355 023 09	Brake Booster 10 in., '79-95	\$375.00
U928 355 023 09	Used Brake Booster, '78-95	\$150.00
HOSES		
928 355 079 00	Front Brake Hose, '78-81	\$34.00
928 355 079 02	Front Brake Hose, '82-83.5	\$68.00
928 355 080 02	Rear Brake Hose, '86.5-95	\$38.00
928 355 080 SS	Stainless Brake Lines, '78-83.5	\$119.00

928 355 081 00	Front Brake Hose, '83-86.5	\$97.00
928 355 081 02	Front Brake Hose, '86.5-91	\$82.00
928 355 082 SS	Stainless Brake Lines, '83.5-95	\$119.00
928 355 660 03	Brake Booster Check Valve	\$16.00
35 133 753 A	Venturi Tube from Booster	\$11.00
911 355 921 00	Rubber Grommet for Booster	\$3.00
911 355 922 00	Brake Fluid Reservoir Grommet	\$2.20
928 423 211 00	Brake Pedal Pad for AT Cars	\$10.00
U928 424 551 16	Used Left Brake Cable (short)	\$75.00
U928 424 552 16	Used Right Brake Cable (long)	\$100.00
928 606 402 00	Rear ABS Sensor up to '86.5	\$182.00
U928 606 402 00	Used Rear ABS Sensor up to '86	\$100.00
928 606 402 01	Rear ABS Sensor, '86.5-95	\$189.00
U928 606 402 01	Used Rear ABS Sensor, '86.5-95	\$80.00
U928 606 404 00	Used Front ABS Sensor, '86	\$125.00
928 606 404 02	Front ABS Sensor, '86.5-91	\$124.00
U928 606 404 02	Used Front ABS Sensor, '86.5-91	\$60.00
477 611 361	Brake Reservoir Cap	\$8.50
431 611 933	Brake Booster Check Valve	\$12.00
928 612 311 00	Brake Pad Sensor, '78 (early front)	\$15.00
928 612 311 03	Brake Pad Sensor, '78-81 (front)	\$15.00
928 612 313 00	Brake Pad Sensor, '78 (early rear)	\$15.00
928 612 313 01	Brake Pad Sensor, '78-86 (rear)	\$15.00
928 612 313 02	Brake Pad Sensor, '86.5-88 (rear)	\$15.00
928 612 315 01	Brake Pad Sensor, '82-86.5 (front)	\$15.00
928 612 315 02	Brake Pad Sensor, '86.5-88 (front)	\$15.00
928 612 363 01	Brake Pad Sensor, '89-95 (rear)	\$15.00
928 612 365 01	Brake Pad Sensor, '89-91 (front)	\$15.00
928 612 366 00	Brake Pad Sensor, '92-95 (front)	\$15.00
843 820 675	Check Valve Vacuum (black/blue)	\$15.00
113 945 515 G	Brake Light and Pressure Switch	\$28.00
PADS		
D209 D	Front Brake Pads, '78-81	\$45.00
D210 D	Rear Brake Pads, '78-86.5	\$35.00
D439 D	Front Brake Pads, '86.5-91	\$55.00
D440 D	Rear Brake Pads, '86.5-91	\$45.00
D501 D	Front Brake Pads, '81-86.5	\$45.00
965 351 096 00	Damping Plate 44mm, '89-95	\$6.95
964 351 096 01	Damping Plate 36mm, '89-95	\$6.50
928 351 096 17	Damping Plate 44mm, '87-88	\$4.50
928 351 096 18	Damping Plate 42mm, '86.5-88	\$4.50
928 351 096 19	Damping Plate 36mm, '86.5-88	\$5.50
964 352 096 00	Damping Plate 30mm, '89-95	\$5.00
964 352 096 01	Damping Plate 28mm, '89-95	\$7.00
928 352 096 10	Damping Plate 30mm, '88	\$10.50
928 352 096 11	Damping Plate 28mm, '88	\$10.00

BRAKE PAD SENSOR INDICATOR WITH ERRONEOUS READINGS

To find the defective pad sensor, you need only a visual inspection. The sensor works by wearing out a plastic cap attached to the inner brake pad. The cap contains a small wire which completes an electrical circuit. As the pad wears down, the plastic cap deteriorates to the point where the wire gets abraded. This creates an open circuit and a warning light on your cluster saying the pads are thin. So, now that you know how it works, you have to check two things:

1. None of the four plastic caps are chewed up
2. All four of the sensors are connected to the car wiring.

CHECKING BRAKE BOOSTER OPERATION

Note: The 928 repair manual does not provide a test for the booster. The following was provided as a replacement.

1. Operating Check
 - a. Depress the brake pedal several times with the engine off, and check that there is no change in pedal reserve distance.
 - b. Depress the brake pedal and start the engine. If he pedal goes down slightly, operation is normal.
2. Air Tightness Check
 - a. Start the engine and stop it after one or two minutes. Depress the brake pedal slowly several times. If the pedal goes down more the first time, but gradually rises after the second or third time, the booster is airtight.
 - b. Depress the brake pedal while the engine is running, and stop it with the pedal depressed. If there is no change in pedal reserve travel after holding the pedal for thirty seconds, the booster is airtight.



Brake Booster

Brake Pads

Brake Wear Sensor



Brake Fluid Reservoir



Brake Master Cylinder



Stainless Brake Lines DOT Legal

A common problem with the climate control system is that the controller only works on full hot or full cold. This is because it relies on the micro switches at either end. These can indicate that the outside air temperature sender is not operating properly. This sensor is located in the the alternator cooling hose in front of the left front tire. The sensor can be tested with an ohm meter. If the outside temperature is:

0° C = approximately 933 ohms

20° C = approximately 588 ohms

30° C = approximately 457 ohms

Another common problem is erratic blower speeds or loss of certain speeds. This usually occurs because of a faulty thermal bi-metal switch located in the evaporator housing under the hood.

U928 126 010 01	Used A/C Compressor, '78-79	\$250.00
U928 126 010 06	Used A/C Compressor, '80-89	\$250.00
U928 126 113 00	Used A/C Compressor, '90-91	\$350.00
U928 126 017 00	Used AC Bracket, '78-79	\$35.00
U928 126 017 04	Used Compressor Bracket, '80-89	\$35.00
928 126 123 03	A/C Adjuster Bracket, '80-89	\$20.00
U928 126 123 03	Used AC Adjuster Bracket, '80-89	\$10.00
U928 126 901 00	Used A/C Clutch, '80-89	\$150.00
U928 573 902 02	Used A/C Clutch, '78-79	\$150.00
928 570 033 00	Rear A/C Vent, '85-95	\$89.00
928 573 011 06	A/C Condenser, '87-95 5sp	\$820.00
U928 573 011 06	Used A/C Condenser, '87-95 5sp	\$350.00
928 573 013 02	A/C Evaporator, '78-86.5	NLA
U928 573 013 02	Used A/C Evaporator '78-86.5	\$200.00
928 573 013 04	A/C Evaporator, '86.5-92	\$575.00
U928 573 013 04	Used A/C Evaporator, '86.5-92	\$250.00
928 573 02	A/C Condenser, '87-95 AT	\$618.00
U928 573 021 00	Used A/C Condenser, '87-95 AT	\$275.00
928 573 021 01	A/C Condenser, '92-95	\$618.00
U928 573 021 01	Used A/C Condenser, '87-95 5 Spd.	\$250.00
928 574 093 KT	A/C Sliding Knob with Clip	\$10.00
928 573 060 05R	A/C Control Head, '80-83 (rebuilt)	\$295.00
928 573 060 09R	A/C Control Head, '83.5-90 (rebuilt)	\$295.00
ACC	AC Control Head Core	\$100.00
928 573 060 11R	A/C Control Head, '91-95 (rebuilt)	\$295.00
U928 573 061 05	Used A/C Control Head, '78-79	\$200.00
928 573 119 03	A/C Control Head, '80-82 (manual)	\$695.00
U928 573 119 03	Used A/C Control Head, '80-82 (manual)	\$300.00
928 573 077 04	Vacuum Pod Above Fuse Panel	\$20.97
928 573 094 02	Vacuum Pod for Center Vent, '80-84	\$145.00

HOSES

928 573 097 06	A/C Pressure Hose, '87-89	\$125.00
928 573 097 07	A/C Pressure Hose, '80-86	\$159.00
928 573 098 02	A/C Suction Hose, '78-79	\$211.00
928 573 098 03	A/C Suction Hose, '80-83	\$152.00
928 573 098 04	A/C Suction Hose, '84-86	\$148.00
928 573 098 05	A/C Suction Hose, '87-89	\$144.00
928 573 098 08	A/C Suction Hose, '90-95	\$280.00
928 573 123 02	Expansion Valve, '78-86.5	\$49.00
928 573 123 05	Expansion Valve, '86.5-95	\$49.00
928 573 143 03	A/C Condenser, '78-86	\$475.00

U928 573 143 03	Used A/C Condenser, '78-86	\$225.00
U928 573 150 03	Used A/C Control Motor, '80-83.5	\$200.00
928 573 309 03	Vac Pod for Central Nozzle	\$86.00
928 573 691 02	A/C Change Over Valve	\$60.00
928 573 727 02	Vacuum Y Connection	\$9.00
928 573 941 03	A/C Drier, '78-86	\$75.00
944 573 943 00	A/C Drier, '87-95	\$75.00
928 574 033 05	A/C Blower Motor	\$479.00
U928 574 033 05	Used A/C Blower Motor	\$200.00
928 574 040 02	Center Vent, '78-79	\$66.00
U928 574 040 02	Used Center Vent, '78-79	\$30.00
928 574 040 03	Center Vent for Vinyl, '80-95	\$74.00
U928 574 040 03	Used Center Vent, Vinyl, '80-95	\$35.00
928 574 040 50	Center Vent with Leather, '80-95	\$74.00
U928 574 040 50	Used Center Vent Leather, '80-95	\$35.00
U928 574 047 02	Used Heat exchanger, '78-93	\$100.00
928 574 077 02	Vacuum Control Pod Defrost	\$47.00
928 574 079 06	Vacuum Pod for Footwell, '80-95	\$68.00
928 574 087 02	Left Door Vent, '78-86	\$69.00
U928 574 087 02	Used Left Door Vent, '78-86	\$30.00
928 574 087 03	Left Door Vent, '87-95	\$72.00
U928 574 087 03	Used Left Door Vent, '87-95	\$30.00
928 574 088 02	Right Door Vent, '78-86	\$70.00
U928 574 088 02	Used Right Door Vent, '78-86	\$30.00
928 574 088 03	Right Door Vent, '87-95	\$69.00
U928 574 088 03	Used Right Door Vent, '87-95	\$30.00
928 574 133 02	Heater Blower Gasket	\$15.00
928 574 157 00	Wiper Motor Cover	\$74.00
959 613 137 00	AC Pressure Switch, '78-95	\$45.00
U959 613 137 00	Used Pressure Switch, '78-95	\$20.00
928 616 101 00	A/C Thermo Bimetal Switch, '89+	\$94.00
928 618 101 01	A/C Thermo Bimetal Relay, '78-88	\$130.00
928 618 105 00	AC Relay, '78-79	\$106.22
928 624 041 00	Dash Temp Sender, '80-95	\$79.00
U928 659 021 01	Used Outside Air Temp Sender	\$65.00
999 707 247 40	AC O-Ring 7.5x2mm	\$1.50
999 707 250 40	AC O-Ring 10.6x2mm	\$1.50
999 707 251 40	AC O-Ring 14x2mm	\$1.50
999 707 252 40	AC O-Ring 17x2mm	\$2.50
999 707 259 40	AC O-Ring	\$10.00
999 707 261 40	AC O-Ring 9x1.8mm	\$10.00



AC Knob and Clip



AC Control Unit

At 928 International, we have a rebuild exchange program for climate control heads, the brain box in the console. They are carefully refurbished to original operating condition using upgrade internal components as needed, and then cleaned and tested. They carry a full one year warranty and are about one third the cost of a new unit. These are normally in stock and ready to ship same day.



AC Center Vent



RESTORATION COMPONENTS

BODY PANELS – TRIMS – DOORS	40	GLASS AND MIRRORS	49
LIGHTS	42	INSIGNIAS	49
BULBS	43	INTERIOR	50
STARTERS – ALTERNATORS		INSTRUMENTS	52
RELAYS – SWITCHES	46	FLOOR MATS	54
WIPERS AND WASHERS	48	RADIOS AND ANTENNAS	55
LOCKS	48	LATEST PRODUCTS	57

FRONT SPOILERS		
928 511 139 03	Front Hood Shocks -SL36- 40 lbs.	\$14.00
928 505 071 03	Front "S" Spoiler, '80-86	\$349.00
928 505 071 21	Front Spoiler, '87-95	\$479.00
928 505 071 21 KT	Spoiler Install Kit, '87-95	\$38.00
928 505 071 KT	Spoiler Install Kit, '80-86	\$39.95
928 505 289 02	Spoiler Support, '87-95 (3 needed)	\$8.50
FRONT BUMPER COVERS		
928 505 113 06	Front Bumper Cover, '78-86	\$695.00
U928 505 113 06	Used Front Bumper Cover, '78-86	\$450.00
928 505 113 20	Front Bumper Cover, '87-95	\$1,195.00
U928 505 113 20	Used Front Bumper Cover, '87-95	\$650.00
928 025 289 02	Bumper Beading Front or Rear '78-86	\$12.00
U928 503 011 03	Used Left Fender, '78-86	\$500.00
U928 503 011 11	Used Left Fender, '87-95	\$750.00
U928 503 012 03	Used Right Fender, '78-86	\$500.00
U928 503 012 11	Used Right Fender, '87-95	\$750.00
U928 503 031 02	Used Fender Support w/o Spoiler	\$50.00
U928 503 031 03	Used Fender Strut with Spoiler	\$60.00
928 504 027 02	Left bottom Splash Shield	\$31.00
928 504 028 02	Right Bottom Splash Shield	\$32.00
U928 504 029 02	Used Catalytic Converter Cover	\$150.00
U928 504 061 02	Used Engine Cross Brace	\$75.00
928 504 159 02	Left Brake Duct, '80-86	\$55.00
U928 504 159 02	Used Left Duct, '78-86	\$25.00
928 504 160 02	Right Brake Duct, '80-86	\$58.00
U928 504 160 02	Used Right Duct, '78-86	\$25.00
SPLASH SHIELDS		
928 504 221 07	Splash Shield, '84-86 (left)	\$64.00
928 504 221 08	Splash Shield No Spoiler	\$52.00
928 504 221 10	Splash Shield with Spoiler	\$52.00
928 504 221 11	Splash Shield, '87-95 (left)	\$52.00
928 504 222 11	Splash Shield, '87-95 (right)	\$48.00
928 504 223 02	Splash Shield Seal, '78-84	\$10.00
928 504 223 04	Splash Shield Seal (left inside)	\$8.00
928 504 223 05	Splash Shield Seal (left top)	\$5.00
928 504 223 07	Splash Shield Seal (left long)	\$4.00
928 504 223 08	Splash Shield Seal (right long)	\$5.00
928 504 223 09	Splash Shield Seal, '87-95	\$3.00
999 591 487 02	Splash Shield Speednut	\$0.50
900 187 115 02	Screw 5.5x16 for Splash Shield	\$0.75
928 504 304 02	Splash Shield Right Rear, '89	\$36.00
U928 504 304 02	Used Rear Splash Guard (right)	\$16.00
928 504 309 02	Splash Shield Left Rear, '78-86	\$42.00
U928 504 309 02	Used LR Splash Shield, '78-86	\$20.00
928 504 309 03	Splash Shield Left Rear, '87-95	\$35.00
U928 504 381 05	Used Fender Liner, '87-89	\$75.00
928 504 551 03	Hood Seal (left and right)	\$14.50
928 504 941 04	Engine Undertray, '78-86	\$160.00
U928 504 941 04	Used Engine Undertray, '78-86	\$80.00
U928 505 010 05	Used Front Reinforcement, '78-86	\$100.00
U928 505 010 21	Used Front Reinforcement, '87-95	\$450.00



Hood Badge Kit



License Plate Holder



Rear Bumper Guard



Front Light Frame

U928 505 015 22	Used Front Bumper Shock, '87-95	\$75.00
928 505 055 02	Left Fog Light Trim, '78-86	\$39.00
U928 505 055 02	Used Left Fog Trim, '78-86	\$20.00
928 505 056 02	Right Fog Light Trim, '78-86	\$39.00
U928 505 056 02	Used Right Fog Trim, '78-86	\$20.00
U928 505 114 02	Used Front Bumper Cover Rail	\$25.00
928 505 117 04	Euro Fog Trim (left)	\$37.00
928 505 118 04	Euro Fog Trim (right)	\$37.00
928 505 143 03	Beading Front Bumper, '87-95	\$9.00
928 505 153 21	Black Fog Light Trim, '87-95	\$3.75
928 505 155 21	Protective Rubber, '87-95	\$7.50
928 505 159 02	Left Spoiler Duct, '80-86	\$65.00
U928 505 159 02	Used L Brake Duct, '80-86	\$50.00
928 505 160 02	Right Spoiler Duct, '80-86	\$65.00
U928 505 160 02	Used R Brake Duct, '80-86	\$45.00
U928 511 005 04	Used Front Hood, '78-95	\$400.00
928 511 027 02	Front Hood Lock Bottom	\$54.00
928 511 029 02	Upper Hood Latch, '78-85	\$27.00
U928 511 029 02	Used Upper Hood Latch, '78-85	\$14.00
928 511 029 03	Upper Hood Latch, '85-95	\$38.00
U928 511 029 03	Used Upper Hood Latch, '85-95	\$12.00
928 511 037 04	Hood Release Cable	\$42.00
U928 511 041 04	Used Left Hood Hinge	\$30.00
U928 511 042 04	Used Right Hood Hinge	\$30.00
928 511 141 03	Hood Seal at Rear	\$26.00
928 511 173 02	Hood Release Backing	\$6.50
928 511 175 02	Hood Release Handle	\$6.00
928 511 203 02	Hood Stop	\$2.50
928 511 551 03	Hood Seal (left or right)	\$16.00
928 556 285 02	Hood Insulation Pad	\$65.00
928 559 037 03	Fender Molding (left front)	\$90.00
U928 559 037 03	Used Ft Fender Molding (left)	\$45.00
928 559 038 03	Fender Molding (right front)	\$90.00
U928 559 038 03	Used Ft Fender Molding (right)	\$45.00
928 559 103 04	Top Windshield Molding	\$125.00
928 559 107 02	Clamp for Vert. Window Trim	\$1.00
928 559 121 03	Drip Molding End (left)	\$10.00
928 559 122 03	Drip Molding End (right)	\$10.00
GRILLES		
928 559 135 04	Grille, Horizontal (3 per car)	\$36.00
U928 559 135 04	Used Horizontal Grille (3 per car)	\$15.00
928 559 137 02	Grille, Vertical Bracket	\$27.00
928 559 139 02	Grille, Vertical Bracket (2 per car)	\$24.00
901 559 210 KT	Hood Emblem Kit	\$37.70
928 559 213 05	Left Sleeve Windshield Trim	\$10.00
928 559 214 05	Right Sleeve Windshield Trim	\$10.00
928 559 281 02	Clip for Side Body Molding	\$4.00
928 701 016 02	License Bracket Set, '78-86 F&R	\$68.00
U928 701 016 02	Used License Bracket, '78-86	\$25.00
U928 701 050 03	Used License Plate Holder, '87-95	\$15.00
928 701 050 04	License Plate Holder (front), '87-95	\$27.00
U928 701 050 04	Used License Plate (front), '87-95	\$15.00

928 701 950 00	License Plate Bracket with Bolts	\$42.00
999 703 132 40	Hood Stops	\$2.00
HDW	Hardware Kit, '87-95 License	\$18.50
928 505 317 00	GTS Rear Reflector	\$129.00
DECALS		
928 505 325 04	"Porsche" Decal – Dark Grey	\$35.00
928 505 325 05	"Porsche" Decal – Light Grey	\$35.00
928 505 335 04	"928 S" Decal – Dark Grey	\$20.00
928 505 335 05	"928 S" Decal – Light Gray	\$20.00
928 505 335 06	"928 S4" Decal – Dark Gray	\$20.00
928 505 335 07	"928 S4" Decal – Light Gray	\$20.00
928 559 221 06	GTS Insignia	\$32.00
928 512 129 02	Rear Hatch Seal, '78-86	\$79.00
928 512 129 04	Rear Hatch Seal, '87-95	\$198.00
U928 531 005 10	Used Left Door, '78-95	\$375.00
U928 531 006 10	Used Right Door, '78-95	\$375.00
911 531 703 00	Rotary Door Knob Insert	\$1.50
928 537 033 04	Door Stay	\$33.58
928 537 063 04	Left Door Handle Hinge	\$51.00
U928 537 063 04	Used Left Door Handle Hinge	\$25.00
928 537 064 04	Right Door Handle Hinge	\$46.00
U928 537 064 04	Used Right Door Handle Hinge	\$25.00
928 537 085 03	Felt Window Guide	\$38.00
U928 537 085 03	Used Window Felt Guide	\$15.00
928 537 095 02	Door Lock Shaft & Pivot, '78-82	\$29.00
928 537 096 02	Door Lock Shaft & Pivot, '83-95	\$37.00
U928 537 096 02	Used Shaft and Pivot for Lock	\$15.00
928 537 111 02	Door Link Rod, '78 only	\$4.00
928 537 111 03	Door Link Rod, '79-80	\$2.00
928 537 111 04	Door Link Rod, '81-95	\$2.00
928 537 112 02	Door Link Rod, '78 only	\$4.00
928 537 140 02	Door Handle Adj. Rod	\$14.00
928 537 169 00	Left Inner Door Handle	\$32.00
U928 537 169 00	Used LF Inner Door Handle	\$7.00
928 537 170 00	Right Inner Door Handle	\$32.00
928 537 259 02	Lower Left Slide	\$17.00
928 537 260 02	Lower Right Slide	\$17.00
928 537 285 02	Guide Tube Bushing	\$2.00
928 537 289 02	Upper Left Slide	\$20.00
928 537 290 02	Upper Right Slide	\$20.00
928 537 301 05	Left Door Corner Molding	\$39.00
928 537 302 05	Right Door Corner Molding	\$39.00



- Hood Release Cable
- Hinge Lock Post



- Door Hardware



- Sunroof



- Window Regulator
- Window Roller and Rivet
- Window Motors

WINDOW SEALS		
928 537 319 03	Left Inner Door Glass Seal	\$132.00
928 537 320 03	Right Inner Door Glass Seal	\$132.00
928 537 321 03	Left Outer Door Glass Seal	\$139.00
928 537 322 03	Right Outer Door Glass Seal	\$139.00
928 537 323 03	Left Upper Door Glass Seal	\$178.00
928 537 324 03	Right Upper Door Glass Seal	\$178.00
928 537 341 02	Left Triangle Window Guide	\$4.00
928 537 342 02	Right Triangle Window Guide	\$4.00
928 537 345 05	Door Seal, '78-95 (left)	\$175.00
U928 537 345 05	Used Door Seal, '78-95 (left)	\$100.00
928 537 346 05	Door Seal, '78-95 (right)	\$175.00
U928 537 346 05	Used Door Seal, '78-95 (right)	\$100.00
928 537 370 03	Door Corner Molding Backing (right)	\$8.00
928 537 531 03	Door Lock Seal	\$3.00
928 537 545 02	Left Handle Backing	\$6.00
928 537 546 02	Right Handle Backing	\$6.00
928 537 581 03	Rotary Door Lock Knob	\$3.00
U928 537 581 03	Used Rotary Door Knob	\$4.00
928 537 585 02	Rotary Knob Backing Plate	\$5.00
U928 537 909 02	Used L Window Regulator, '78-94	\$90.00
U928 537 909 04	Used L Window Regulator, '84-95	\$90.00
U928 537 910 02	Used R Window Regulator, '78-84	\$90.00
U928 537 910 04	Used R Window Regulator, '84-95	\$90.00
928 555 359 02	Door Lock Top Knob	\$1.70
928 555 607 02	Knob Armrest Box	\$5.00
928 559 033 03	Door Molding (left)	\$146.00
U928 559 033 03	Used Door Molding (left)	\$65.00
928 559 034 03	Door Molding (right)	\$135.00
U928 559 034 03	Used Door Molding (right)	\$65.00
999 591 451 40	Door Plate Clip	\$1.00
999 591 519 40	Door Sill Rivet	\$1.00
WINDOW MOTORS		
928 624 013 03	L Window Motor, '84-95 (10 tooth)	\$175.00
U928 624 013 03	Used LF Window Motor, '84-95 (10 tooth)	\$100.00
928 624 013 04	L Window Motor, '78-83, (8 tooth)	\$175.00
U928 624 013 04	Used LF Window Motor, '78-83 (8 tooth)	\$100.00
928 624 014 03	R Window Motor, '84-95, (10 tooth)	\$175.00
U928 624 014 03	Used RT Window Motor, '84-95 (10 tooth)	\$100.00
928 624 014 04	R Window Motor, '78-83, 8 teeth	\$175.00
U928 624 014 04	Used RT Window Motor, '78-83 8T	\$100.00
928 624 401 02	Left Door Lock Motor, '80-88	\$126.00

When installing new hood or hatch shocks, always mount large end up. Installing shocks with the large end down will shorten their life.



U928 624 401 02	Used L Door Lock Motor, '80-88	\$50.00
928 624 402 02	Right Door Lock Motor, '80-88	\$126.00
U928 624 402 02	Used RT Door Lock Motor, '80-88	\$50.00
999 702 116 40	Grommet for Door Jam Clip	\$0.75
823 867 299	Door Panel Clip, Black	\$1.10
433 867 299 A	Door Clip, White	\$1.00
WRK	Window Roller Kit	\$6.00
0 043 082 GL	Reproduction GTS Wing	\$295.00

REAR BUMPER COVERS

U92 8505 123 05	Used Rear Bumper Cover, '78-86	\$250.00
U928 505 123 21	Used Rear Bumper Cover, '87-91	\$650.00
928 505 123 23	Rear Bumper Cover, '92-95	\$1,195.00
928 505 131 02	Plug In Bumper Cover, '78-86	\$15.00
U928 505 131 02	Used Plug In Bumper Cover	\$6.00
928 505 145 03	Beading Rear Bumper, '87-95	\$9.00
928 505 005 03	Left Rear Bumper Guard, '78-86	NLA
U928 505 005 03	Used LR Bumper Guard, '78-86	\$50.00
928 505 005 20	Left Rear Bumper Guard, '87-95	\$100.00
U928 505 005 20	Used LR Bumper Guard, '87-95	\$50.00
928 505 006 03	Right Rear Bumper Guard, '78-86	\$211.00
U928 505 006 03	Used RR Bumper Guard, '78-86	\$50.00
928 505 006 20	Right Rear Bumper Guard, '87-95	\$100.00
U928 505 006 20	Used RR Bumper Guard, '87-95	\$50.00
U928 505 015 02	Used Bumper Shock, '78-86	\$50.00
U928 505 016 22	Used Rear Bumper Shock, '87-95	\$100.00
U928 505 034 02	Used Bumper Cover Support	\$10.00
U928 505 037 02	Used Rear Bumper Support	\$10.00
928 505 039 02	Rear Bumper Support (left), '86	\$22.00
928 505 040 02	Rear Bumper Support (right), '86	\$24.00
U928 505 040 02	Used Rear Bumper Support	\$10.00

928 505 065 20	Rear S4 Bumper Pad Mount	\$82.00
U928 505 065 20	Used Rear S4 Bumper Pad Mount	\$35.00
U928 512 071 02	Used Center Rear Spoiler, '80-86	\$150.00
U928 512 073 02	Used Left Rear Spoiler, '80-86	\$40.00

REAR HATCH SEALS

U928 512 078 04	Used S4 Rear Spoiler	\$250.00
U928 512 129 02	Used Rear Hatch Seal, '78-86	\$35.00
U928 512 129 04	Used Rear Hatch Seal, '87-95	\$100.00
928 512 331 05	Rear Hatch Shock - SL36 - 100 lbs.	\$14.00
928 512 531 02	Teflon Hatch Anti-Squeak Film	\$3.75
928 543 439 03	Rear Molding Clip, '82-86	\$6.60
928 543 439 04	Rear Molding Clip (left), '82-86	NLA
928 543 440 04	Rear Molding Clip (right), '82-86	NLA
U928 564 025 02	Used Sunroof Transmission	\$50.00
928 564 057 02	Left Sunroof Hinge	\$32.00
U928 564 057 02	Used Left Sunroof Hinge	\$10.00
928 564 058 02	Right Sunroof Hinge	\$32.00
U928 564 058 02	Used Right Sunroof Hinge	\$10.00
928 564 083 43	Cable, Sunroof (left), '78-95	\$60.00
928 564 084 43	Cable, Sunroof (right), '78-95	\$60.00
928 564 259 02	Large Sunroof Seal	\$69.00
928 564 261 02	Small Sunroof Seal	\$39.00
928 564 267 02	Sunroof Sliding Block	\$2.00
928 564 268 03	Guide Shoe for Sunroof Track	\$2.00
928 564 358 02	Sunroof Protective Edge	\$9.00
U928 624 007 00	Used Sunroof Motor, '78-83	\$150.00
U911 624 016 03	Used Sunroof Motor, '84-91	\$150.00
928 701 050 03	License Plate Holder, '87-95 R	\$27.00
999 703 308 00	Rubber Mount for Sunroof Motor	\$6.50



GTS Rear Wing



S Three Piece Rear Spoiler

- S Brake Ducts
- Grill Horizontals
- S Front Spoiler



Front Fender with European/ROW Sidemarker



Front Bumper Cover 1978-1986



Splash shield Under Fender

QUESTIONS?
CALL 714-632-9288

Wiring order for the 1978-1986 headlight motor is as follows:

- 1 — brown red
- 2 — white black
- 3 — yellow green
- 4 — red black



Headlight Bucket



Chrome Trim Ring



Third Brake Light



Taillight Lens 78-86



Taillight Assembly 87-95



Used Headlight Base Assembly in Fender

U928 624 021 00	Used Headlight Motor, '78-86	\$125.00
U928 624 023 00	Used Headlight Motor, '87-95	\$125.00
928 631 070 00	Third Brake Light	\$65.00
U928 631 070 00	Used Third Brake Light	\$30.00
928 631 101 03	H4 Euro Headlight with Seal	\$269.00
U928 631 101 03	Used H4 Euro Headlamp	\$125.00
901 631 102 03	Headlight Steel Retainer Ring	\$36.00
U901 631 102 03	Used Headlight Steel Ring	\$15.00
928 631 113 01	Headlight Carrier	\$50.00
U928 631 113 01	Used Headlight Carrier	\$25.00
928 631 131 00	Red Door Jam Light	\$8.50
928 631 135 00	H5 Headlight Assembly	\$295.00
U928 631 135 00	Used Headlight Assembly H5	\$125.00
928 631 136 00	H5 Pigtail Connector	\$9.00
928 631 201 02	Headlight Support Rod	\$6.00
U928 631 410 00	Used Front Euro Side Marker	\$30.00
928 631 410 01	Euro Front Side Marker	\$75.00
928 631 411 02	Left Front Side Marker, '78-86	\$70.00
U928 631 411 02	Used LF Side Marker, '78-86	\$20.00
928 631 411 03	Left Front Side Marker, '87-95	\$55.00
U928 631 411 03	Used LF Side Marker, '87-95	\$25.00
928 631 412 02	Right Front Side Marker, '78-86	\$45.00
U928 631 412 02	Used RF Side Marker, '78-86	\$20.00
928 631 412 03	Right Front Side Marker, '87-95	\$55.00
U928 631 412 03	Used RF Side Marker, '87-95	\$20.00
928 631 416 00	Right Euro Fog Light	\$125.00
U928 631 416 00	Used Right Euro Fog Light	\$80.00
928 631 416 01	Left Euro Fog Light	\$125.00
U928 631 416 01	Used Left Euro Fog Light	\$80.00
928 631 417 00	Right Fog Light, '78-86	\$175.00

U928 631 417 00	Used Right Fog Light, '78-86	\$75.00
928 631 417 01	Left Fog Light, '78-86	\$175.00
U928 631 417 01	Used Left Fog Light, '78-86	\$75.00
928 631 421 00	Right Turn Light, '78-86	\$75.00
U928 631 421 00	Used Right Turn Light, '78-86	\$35.00
928 631 421 01	Left Turn Light, '78-86	\$75.00
U928 631 421 01	Used Left Turn Light, '78-86	\$35.00
928 631 421 22	Right Turn Light, '87-95	\$109.00
U928 631 421 22	Used Right Turn Light, '87-95	\$40.00
928 631 421 23	Left Turn Light, '87-95	\$109.00
U928 631 421 23	Used Left Turn Light, '87-95	\$40.00
928 631 425 01	Left Rear Side Marker, '78-86	\$75.00
U928 631 425 01	Used LR Side Marker, '78-86	\$35.00
928 631 425 02	Left Rear Side Marker, '87-95	\$71.00
U928 631 425 02	Used LR Side Marker, '87-95	\$35.00
U928 631 426 01	Used RR Side Marker, '78-86	\$35.00
928 631 426 02	Right Rear Side Marker, '78-95	\$65.00
U928 631 426 02	Used RR Side Marker, '87-95	\$35.00
928 631 429 00	Right Parking Light, '78	\$80.00
U928 631 429 00	Used Right Park Light, '78	\$50.00
928 631 429 01	Left Parking Light, '78	\$80.00
U928 631 429 01	Used Left Park Light, '78	\$50.00
928 631 443 00	Left Parking Light, '78-86	\$225.00
U928 631 443 00	Used Left Park Light 79-86	\$75.00
928 631 444 00	Right Park Light, '79-86	\$225.00
U928 631 444 00	Used Right Park Right, '79-86	\$75.00
928 631 449 00	Left Fog/Driving Light, '87-95	\$359.00
928 631 450 00	Right Fog/Driving Light, '87-95	\$359.00
928 631 453 00	Front Side Marker Seal, '87-95	\$5.00
928 631 465 02	Taillight Harness, '87-95	\$204.00

U928 631 465 02	Used S4 Rear Tail Harness	\$100.00
928 631 483 01	Left Tail Light, '87-95	\$259.00
U928 631 483 01	Used Left Tail Light, '87-95	\$120.00
928 631 484 01	Right Tail Light, '87-95	\$280.00
U928 631 484 01	Used Right Tail Light, '87-95	\$120.00
928 631 620 00	License Plate Light, '78-88	\$32.00
928 631 924 00	Tail Lens Seal, '78-86	\$5.25
928 631 925 00	Euro Driving Lens (left)	\$72.00
928 631 925 01	Left Fog Light Lens, '78-86	\$98.00
928 631 926 00	Euro Driving Lens (right)	\$72.00
928 631 926 01	Rt. Fog Light Lens, '78-86	\$68.00
928 631 927 00	Euro Driving Lens (left)	\$93.00
928 631 928 00	Euro Driving Lens (right)	\$115.00
928 631 929 00	Left Turn Lens, '78-86	\$29.00
928 631 930 00	Right Turn Lens, '78-86	\$24.00
928 631 931 03	Left Tail Light, '78-86	\$193.00
U928 631 931 03	Used Left Tail Light, '78-86	\$65.00
928 631 932 03	Right Tail Light, '78-86	\$191.00
U928 631 932 03	Used Right Tail Light, '78-86	\$65.00
928 631 933 03	Left Tail Lens, '78-86	\$149.00
U928 631 933 03	Used Left Tail Lens, '78-86	\$65.00
928 631 934 03	Right Tail Lens, '78-86	\$145.00
U928 631 934 03	Used Right Tail Lens, '78-86	\$65.00
928 631 937 00	Left Park Lens, '78	\$30.00
928 631 938 00	Right Park Lens, '78	\$30.00
928 631 945 00	Left Park Lens, '79-86	\$20.00
928 631 945 01	Left Turn Lens, '87-95	\$16.95
928 631 946 00	Right Park Lens, '79-86	\$20.00
928 631 946 01	Right Turn Lens, '87-95	\$24.00
928 631 951 02	Left Fog Lens, '87-95	\$195.00
928 631 952 02	Right Fog Lens, '87-95	\$195.00
928 631 965 00	Clear Fog Light Trim, '87-95	\$19.00
928 632 101 00	Glove Box Light	\$9.00
911 632 102 00	Interior Light	\$20.00
928 632 109 01	Floor Light	\$22.00
U928 750 041 05	Used Headlight Center Shaft	\$50.00
928 750 055 02	Headlight Shaft Guide	\$10.00
U928 750 067 02	Used Headlight Motor Arm	\$8.26
928 750 083 02	Headlight Cover	\$75.00
U928 750 083 02	Used Headlight Cover	\$50.00
U928 750 097 05	Used Headlight Driving Arm	\$75.00
928 750 211 04	Headlamp Lift Bushing	\$10.00
928 750 285 03	Headlamp U Bracket	\$80.00
U928 750 285 03	Used Headlight U Bracket	\$40.00
928 750 327 03	Chrome Headlight Trim Ring	\$40.00
U928 750 327 03	Used Headlight Trim Ring, '78-86	\$20.00
928 025 255 00	Front Sidemarker Seal, '78-86	\$6.50
914 504 319 00	Rubber Cap H/L Adjuster	\$3.00

999 631 018 90	Bulb 12V 3 Watt Glove Box	\$3.50
900 631 019 90	12 V 3W Instrument Light Bulb	\$1.00
999 631 034 90	H4 60/55 Bulb	\$20.00
900 631 102 90	Bulb Console & Door Safety	\$1.00
900 631 103 90	12V 4W Park/Door Light Bulb	\$1.00
900 631 104 90	12 Volt 5W Side and Rear Bulb	\$1.50
900 631 105 90	12 Volt 5W License Bulb	\$1.00
900 631 106 90	12 V 10W Interior Overhead Bulb	\$1.00
900 631 115 90	12 Volt 10W Rear Bulb	\$1.00
900 631 120 90	12v 2w Door Jam Light Bulb	\$1.10
900 631 126 90	H-3 55W Fog Light Bulb	\$12.00
900 631 127 90	12 V 21W Turn and Rear Bulb	\$1.00
999 631 127 90	Sealed Beam Headlight	\$12.00
900 631 128 90	12 Volt 21/5W Rear Bulb	\$2.55
999 631 128 90	H5 65/45 with Bulb	\$20.00
999 631 128 95	H4 55/100 with Bulb	\$20.00
900 631 132 90	12 Volt 1.2W Instrument Bulb	\$1.50
999 631 202 90	H4 80/100 with Bulb	\$20.00
999 631 301 90	Instrument Bulb with Holder	\$2.95
928 641 982 01	2w 12v Bulb	\$4.00
928 641 982 04	1.2 w 12v Bulb	\$3.00



H5 Headlight Bulb



H4 Headlight Bulb

Three different headlights have been used on the 928. The USA spec '78-86 used a conventional sealed beam unit with a seven inch diameter and plastic/chrome trim ring. The euro cars used the H-4 halogen eight inch diameter lights, and the small bulbs are replaceable. The '87-95 USA cars use a H-5 eight inch light which looks much like the H-4 and accepts small replacement bulbs, but is legal for use in the US. The H-4 Euro light throws the most light the farthest, which is why it is not legal in the US. The H-5 is good and accepts higher wattage bulbs. The seven inch sealed beams are the same as were used on old Chevy trucks, and the plastic chrome filler trim ring is the only chrome on any 928 (except for door lock bezels in '78).The mounting brackets are in place to upgrade all 928s to eight inch headlights. We occasionally have good used sets.



- Side Marker Bulb
- Brake Light Bulb
- Interior Overhead Bulb
- H-3 Footlight Bulb
- Hood Light Bulb
- Instrument Panel Bulb



- Mirror Adjustable Switch and Cross Over
- Early Seat Switch
- Intensive Washer Switch



- Combination Switch
- Window Switch
- Rear Wiper Switch



Porsche Alternator Wiring Harness Issues:
Porsche fitted cooling shroud to the back of the alternator and a hose to duct cool clean air to the alternator.

ALTERNATORS			
U928 603 011 01	Used Alternator, '85-89		\$250.00
928 603 011 EX	Rebuilt Alternator, '85-89		\$249.00
928 603 114 01	Alternator, '78-84		\$325.00
U928 603 114 01	Used Alternator, '82-84		\$150.00
928 603 114 AX	Alternator, '78-84 Rebuilt Exchange		\$249.00
AC	Alternator Core		\$75.00
U928 603 131 00	Used Alternator Pulley, '85-95		\$15.00
928 603 133 04	Alternator Cover, '78-84 (plastic)		\$31.00
928 603 133 07	Alternator Cover, '85-89		\$29.00
928 612 865 02	Rubber Seal for Alt. Cover		\$6.42
928 603 135 02	Alternator Cover Seal, '78-84		\$8.00
928 603 135 03	Alternator Cover Seal, '85-95		\$9.00
928 603 143 00	Alternator Cooling Hose		\$50.00
911 603 913 01	Volt Regulator - Valeo		\$65.00
928 604 103 AX	Starter, '78-86 Rebuilt Exchange		\$250.00
U928 604 103 AX	Used Starter, '78-86		\$100.00
U928 604 103 DX	Used Starter, '87-95		\$100.00
SC	Starter Core		\$75.00
U928 607 002 15	Used Alternator Harness, '87-88		\$125.00
U928 607 002 17	Used Alternator Harness, '89-95		\$300.00
FUSES			
N 01 7 121 1	8A Fuse, '78-84		\$0.50
N 01 7 121 4	16 A Fuse, '78-84		\$0.50
N 01 7 121 5	25 A Fuse, '78-84		\$0.50
999 607 004 00	5 Amp Fuse, '85-95		\$0.65
999 607 005 00	7.5 Amp Fuse, '85-95		\$0.65
999 607 007 00	15 Amp Fuse, '85-95		\$0.65
999 607 009 00	25 Amp Fuse, '85-95		\$0.65
999 607 010 00	30 Amp Fuse, '85-95		\$0.65
U928 610 105 01	Used Fuse Panel, '78-79		\$150.00
U928 610 105 04	Used Fuse Panel, '80-81		\$150.00
U928 610 105 05	Used Fuse Panel, '82		\$150.00
U928 610 105 06	Used Fuse Panel, '83		\$150.00
U928 610 105 07	Used Fuse Panel, '84		\$150.00
U928 610 105 09	Used Fuse Panel, '85-86 early		\$250.00
U928 610 105 13	Used Fuse Panel, '86 GS861000+		\$250.00
U928 610 105 16	Used Fuse Panel, '87-88		\$250.00
U928 610 105 17	Used Fuse Panel, '89		\$350.00
U928 610 105 19	Used Fuse Panel, '90		\$450.00
U928 612 007 00	Used Pos Battery Cable, '79-86		\$75.00
928 612 007 01	Positive Battery Cable, '78-86		\$195.00
U928 612 007 01	Used Pos Battery Cable, '78		\$193.00

928 612 007 02	Positive Battery Cable, '86.5		\$228.00
U928 612 007 02	Used Pos Battery Cable, '86.5		\$75.00
928 612 007 03	Positive Battery Cable, '87-89		\$275.00
U928 612 007 03	Used Pos Battery Cable, '87-89		\$75.00
928 612 009 10	Negative Battery Cable, '79-81		\$39.00
U928 612 009 10	Used Ground Strap, '79-81		\$20.00
928 612 009 13	Negative Battery Cable, '82-95		\$58.00
U928 612 009 13	Used Ground Strap, '82-95		\$25.00
928 612 073 00	Positive Terminal Cap, '85-95		\$7.00
928 612 869 00	Positive Terminal Cap, '78-84		\$9.00
928 612 871 02	Positive Terminal Shield		\$6.00
964 613 012 00	Ignition Electrical Switch		\$55.00
928 613 082 00	4-Way Mirror Knob, '87-95		\$7.00
SWITCH			
928 613 101 06	Turn Combo Switch with Cruise		\$179.00
U928 613 101 06	Used Combo Switch with Cruise		\$75.00
928 613 103 00	Headlight Switch		\$40.00
U928 613 103 00	Used Headlight Switch		\$20.00
U928 613 105 01	Used Flasher Switch		\$20.00
928 613 111 00	Fog Light Switch		\$56.00
U928 613 111 00	Used Fog Light Switch		\$20.00
911 613 113 00	Mirror Crossover Switch, '78-86		\$12.00
928 613 114 00	Rear Hatch Switch, '84-91		\$58.66
911 613 115 00	Mirror Switch 4-Way, '78-86		\$59.00
928 613 120 00	Sunroof Switch, '78-89		\$54.00
928 613 120 02	Sunroof Switch, '90-95		\$38.00
928 613 121 01	Potentiometer for Dash Lights		\$64.00
928 613 122 00	Intermittent Wiper, '78-88		\$53.00
928 613 123 05	Window Switch, '78-89		\$49.00
928 613 123 07	Window Switch, '90-95		\$54.00
928 613 124 00	Intensive Washer Switch		\$9.00
928 613 129 03	Rear Wiper Switch, '80-91		\$60.00
928 613 129 04	Rear Wiper Switch, '91-95		\$71.00
928 613 131 01	Temp Switch, '78-95		\$95.00
U928 613 131 01	Used Temp Switch, '78-95		\$40.00
928 613 144 00	Power Seat Switch, '78-84		\$44.00
928 613 154 01	Rear AC Temp Knob		\$5.35
928 613 155 01	Rear AC Fan Knob		\$6.00
928 613 173 00	Hood Alarm Switch, '87-95		\$14.00
928 613 181 00	Power Seat Switch, Vert, Sport		\$78.00
928 613 182 00	Seat Switch, '85-91 Horz. & ft vert.		\$115.00
928 613 183 00	Seat Switch, Backrest, '85-95		\$110.00
928 613 184 00	Seat Switch with Lumbar		\$45.00

928 613 240 00	Mirror Change over Switch, '87-95		\$61.00
928 613 241 00	4 Way Mirror Switch, '87-95		\$69.00
928 613 433 00	Rear Hatch Knob, '84-91		\$7.00
928 613 437 00	Rear Hatch Knob Center		\$3.00
928 613 462 00	4-Way Mirror Knob, '78-86		\$2.00
914 613 541 02	5 Speed Back Up Switch		\$69.00
964 613 601 00	Pin Switch Door and Rear Hatch		\$12.00
U928 617 121 01	Used Cruise Control Unit, '79-84		\$175.00
U928 617 127 00	Used Cruise Control Amp		\$175.00
928 617 127 00R	Rebuilt Cruise Control Amp		\$295.00
U928 618 106 01	Used Fuel Injection Brain, '80		\$500.00
U928 618 106 04	Used Fuel Injection Brain, '81-84		\$500.00
928 618 225 01	Relay Interior Light, '86.5-95		\$143.00
928 618 418 00	Fan Control Unit, '87-95		\$316.00
928 624 407 02	Rear Hatch Release Motor		\$149.00
U911 635 101 20	Used High Horn, '78-86		\$20.00
U911 635 102 20	Used Low Horn, '78-86		\$20.00
RELAY			
U928 615 111 00	Used, Aux Fan, Lamp Clean Relay		\$20.00
928 615 113 01	Fuel Pump Relay, '78-84		\$59.00
U928 615 113 01	Used Fuel Pump Relay, '78-84		\$25.00
U928 615 115 00	Used Window Heating Relay		\$40.00
928 615 116 00	Relay Headlight, '78-79 Window, '83-84		\$16.01
928 615 117 00	Multi-function Relay		\$15.63
928 615 119 00	Relay, Multi-function		\$26.00
U928 615 123 00	Used Relay, Hi, Lo Headlight, '78-79		\$20.00
928 615 124 01	Relay, Antilock		\$82.00
U928 615 124 01	Used ABS Relay		\$30.00
928 615 126 00	Window Relay		\$38.00
U928 615 126 00	Used Window Relay		\$17.00
U928 615 127 00	Used Headlight Relay, '78-79		\$20.00
928 615 137 01	Fog Light Relay		\$28.00
928 615 203 00	Ignition Relay, '87-95		\$36.08
U928 618 105 00	Used AC Relay, '78-79		\$50.00
U928 618 107 01	Used Headlight Relay, '87-95		\$50.00
928 618 107 02	Relay, Headlight, '80-86		\$109.00
U928 618 107 02	Used Headlight Relay, '80-86		\$50.00
928 618 107 04	Relay, Headlight, '87-95		\$97.00
928 618 111 00	Relay, Headlamp Washer		\$83.00
U928 618 111 00	Used Headlight Washer Relay		\$30.00
1H0 953 227	Turn Signal/4 Flasher Relay		\$21.33
141 951 253 B	Relay Fuel and Misc., '85-91		\$12.00



Sunroof Switch

WIPERS AND WASHERS

478 955 425	Front Wiper Blade	\$12.00
478 955 427 C	Rear Wiper Blade	\$12.00
999 137 054 40	Washer "Y" Connector	\$2.00
900 281 002 40	Nut for Headlamp Washer Nozzle	\$1.00
928 528 071 02	Headlamp Squirter	\$16.00
928 528 073 04	Washer Hose Connector in Hood	\$12.95
928 528 075 01	Washer Tank, '87-91	\$99.00
U928 528 075 01	Used Washer Tank	\$30.00
928 528 179 01	Washer Filler Neck, '85-95	\$59.00
928 528 181 02	Cap For Filler Neck	\$5.75
928 528 975 01	Washer Tank in Fender, '78-86	\$70.00
U928 528 975 01	Used Washer Tank in Fender	\$25.00
928 628 074 01	Washer Pump, '78-86	\$46.00
U928 628 074 01	Used Washer Pump, '78-86	\$20.00
928 628 077 00	Washer Nozzle Heated	\$45.00
928 628 079 00	Washer Nozzle	\$12.00
928 628 172 01	Washer Pump, '87-88	\$35.00
U928 628 172 01	Used Washer Pump, '87-88	\$15.00
928 628 179 00	Washer Filler Neck, '78-83	\$37.00
914 628 215 00	Washer Check Valve, '87-95	\$5.50
U928 628 221 00	Used Front Wiper Pivot, '78-84	\$75.00
U928 628 221 01	Used Front Wiper Pivot, '85-91	\$50.00
U928 628 303 00	Used Wiper Motor, '78-80	\$100.00
U928 628 303 01	Used Wiper Motor, '81-82	\$100.00
U944 628 303 01	Used Wiper Motor, '85-95	\$100.00
U928 628 303 02	Used Wiper Motor, '83-84	\$100.00
U928 628 309 02	Used Rear Wiper Pivot, '78-86	\$20.00
U928 628 309 03	Used Rear Wiper Pivot 87-91	\$25.00
928 628 325 01	Rear Wiper Pivot Seal	\$2.50
928 628 326 01	Rear Wiper Pivot Seal	\$2.50
U928 628 403 02	Used Rear Wiper Motor	\$50.00
914 628 433 00	Check Valve in Hood, '78-86	\$6.45
928 628 610 05	Rear Wiper Arm	\$200.00
U928 628 610 05	Used Rear Wiper Arm	\$75.00
928 628 621 00	R Wiper Cap Large w/o Spoiler	\$2.50
928 628 622 00	R Wiper Cap Large w/o Spoiler	\$8.75
928 628 623 00	Wiper Arm Cap Ft & R w Spoiler	\$8.75
928 628 716 02	Right Wiper Grommet	\$2.50
928 628 717 01	Left Wiper Grommet 4 Arm	\$2.50
914 628 741 00	Rubber Plug for Mounting Pump	\$6.00
901 628 749 20	T Piece Windshield Washer	\$3.06
281 955 187	Check Valve H/L Washer	\$12.95
477 955 481	Check Valve Hood Washer	\$4.95
191 955 681	Washer Pump @ Tank Bottom	\$69.00
U191 955 681	Used Washer Pump @ Tank Bottom	\$30.00



If you have wires attached to your lock, your car was fitted with the factory alarm option.

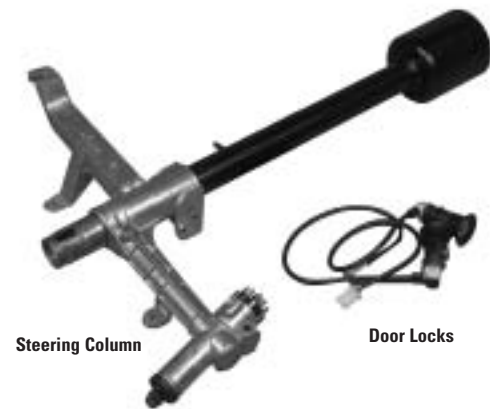
Remote rear hatch release failure is a common problem. To troubleshoot the problem, first check both fuses on the relay board. If you hear the motor turning but the hatch does not release, you may have an alignment problem. Most commonly, the release arm will not push the upper hatch release far enough. The easiest solution is to place a small shim under the forward end of the upper lock, altering the angle at which the upper hatch rests when closed.

We also offer full in-house locksmith service with the ability to repair or rekey your locks.



LOCKS

928 512 055 20	Rear Hatch Receiver, '84-95	\$109.00
U928 512 055 20	Used Rear Hatch Receiver, '84-95	\$50.00
928 512 055 40	Rear Hatch Receiver, '78-83	\$100.00
U928 512 055 40	Used Rear Hatch Receiver, '78-83	\$45.00
928 512 161 02	Hatch Lock Latch w/o Alarm	\$12.50
928 512 161 03	Hatch Lock Latch with Alarm	\$12.50
928 512 165 02	Pin for Hatch Latch	\$2.00
928 512 169 03	Hatch Lock Seal	\$5.00
928 512 903 02	Rear Hatch Lock, No Alarm	\$146.00
U928 512 903 02	Used Rear Hatch Lock, Non-Alarm	\$75.00
928 512 903 03	Rear Hatch Lock with Alarm	\$375.00
U928 512 903 03	Used Rear Hatch Lock, Alarm	\$175.00
928 537 630 02	Key Head Light Bulb	\$5.00
928 537 903 02	Door Lock, Non-Alarm	\$129.00
U928 537 903 02	Used Black Door Lock, Non-Alarm	\$60.00
U928 537 903 03	Used Chrome Door Lock, '78	\$60.00
928 537 905 02	Left Door Lock with Alarm	\$395.00
U928 537 905 02	Used Left Door Lock with Alarm	\$175.00
928 537 906 02	Right Door Lock with Alarm	\$395.00
U928 537 906 02	Used Right Door Lock with Alarm	\$125.00
944 538 041 00	Lighted Key Head	\$21.00
REKE Y	Re-Key Lock	\$45.00



Steering Column

Door Locks



Ignition Lock

Ignition Switch Electrical



- Upper Hatch Lock with Alarm
- Replacement White Latch for Upper Lock
- Pin for Above

USED PARTS NOW HAVE A 12 MONTH WARRANTY

U928 537 015 02	Used Left Door Glass Bronze	\$125.00
U928 537 016 02	Used Right Bronze Door Glass	\$125.00
U928 537 101 02	Used Left Green Door Glass	\$175.00
U928 537 102 02	Used Right Green Door Glass	\$175.00
928 543 037 04	1/4 Glass Seal, Left, '87-95	\$215.00
928 543 038 03	1/4 Glass Seal, Right, '78-81	\$75.00
928 543 038 04	1/4 Glass Seal, Right, '87-95	\$215.00
928 543 045 04	1/4 Glass Seal, Left with Spoiler	\$195.00
928 543 046 04	1/4 Glass Seal, Right with Spoiler	\$195.00
U928 543 103 08	Used Lf 1/4 Glass Bronze, No Spoiler	\$75.00
U928 543 103 09	Used Lf 1/4 Glass Bronze, with Spoiler	\$75.00
U928 543 104 08	Used Rt 1/4 Glass Bronze, No Spoiler	\$75.00
U928 543 104 09	Used Rt 1/4 Glass Bronze with Spoiler	\$75.00
U928 543 105 08	Used Lf 1/4 Glass Green, No Spoiler	\$75.00
U928 543 105 09	Used Lf 1/4 Glass Green, with Spoiler	\$75.00
U928 543 106 08	Used Rt 1/4 Glass Green, No Spoiler	\$75.00
U928 543 106 09	Used Rt 1/4 Glass Green, with Spoiler	\$75.00
U928 545 018 02	Used R Hatch Glass Green, No Spoiler	\$300.00
U928 545 018 03	Used R Hatch Glass Green w spoiler	\$300.00
U928 545 018 04	Used R Hatch Glass Green no spoiler	\$300.00
U928 545 018 05	Used R Hatch Glass Green w spoiler	\$300.00
U928 545 107 03	Used R Hatch Glass Bronze-'82	\$250.00

*no 3rd brake light.



- Rear View Mirror

- Electric Mirror Assembly 87-91
Mirror Glass
Mirror Glass Back

INSIGNIAS

928 505 317 00	GTS Rear Reflector	\$129.00
928 505 325 04	"Porsche" Decal-Dark Grey	\$35.00
928 505 325 05	"Porsche" Decal-Light Grey	\$35.00
928 505 335 04	"928 S" Decal-Dark Grey	\$20.00
928 505 335 05	"928 S" Decal-Light Gray	\$20.00
928 505 335 06	"928 S" Decal-Dark Gray	\$20.00
928 505 335 07	"928 S" Decal-Light Gray	\$20.00

GLASS AND MIRRORS

MIRRORS		
U928 624 067 00	Used Mirror Trans w Memory	\$150.00
944 731 027 01	Mirror Trans '87-91	\$229.00
U944 731 027 01	Used Mirror Trans '87-91	\$75.00
911 731 027 06	Mirror Motor Left '78-86	\$269.00
U911 731 027 06	Used Mirror Motor Left '78-86	\$50.00
911 731 028 06	Mirror Motor Right '78-86	\$229.00
U911 731 028 06	Used Mirror Motor Right '78-86	\$50.00
965 731 035 00	Left Aero mirror glass	\$82.00
944 731 035 02	Mirror Glass '87-91	\$60.00
U944 731 035 02	Used Mirror Glass '87-91	\$30.00
944 731 035 06	Mirror Glass '87-91 convex	\$91.00
U944 731 035 06	Used Mirror Glass '87-91 convex	\$40.00
911 731 035 08	Mirror Glass '78-86	\$86.00
U911 731 035 08	Used Mirror Glass '78-86	\$40.00
911 731 035 12	Mirror Glass '78-86 Convex	\$95.00
U911 731 035 12	Used Mirror Glass 78-86 Convex	\$45.00
965 731 038 01	Right Aero mirror glass	\$99.00
928 731 247 00	Left GTS Mirror Gasket	\$3.50
928 731 247 03	Left Mirror Base Seal '78-91	\$3.90
928 731 248 00	Right GTS Mirror Gasket	\$3.50
928 731 249 03	Right Mirror Base Seal '78-91	\$3.90
911 731 257 02	Hollow mirror base bolt	\$14.00
U911 731 257 02	Used Hollow bolt for mirror	\$6.00
911 731 347 00	Upper split washer mirror bolt	\$2.00
GTS AERO MIRROR		
928 731 901 00	GTS Aero Mirror Kit	\$482.00

928 GTS

INTERIOR COMPONENTS

928 555 1 BLACK	Luggage Cover, Aftermarket	\$279.00
928 555 1 BLUE	Luggage Cover, Aftermarket	\$279.00
928 555 1 BROWN	Luggage Cover, Aftermarket	\$279.00
928 555 1 BURGUNDY	Luggage Cover, Aftermarket	\$279.00
DASH TOP BLACK	Dash and Pod Overlay	\$129.00
DASH TOP BLUE	Dash and Pod Overlay	\$129.00
DASH TOP BROWN	Dash and Pod Overlay	\$129.00
DASH TOP WINE	Dash and Pod Overlay	\$129.00
DASH COVER BLACK	Carpet Dash Cover, '78-93	\$49.95
DASH COVER BLUE	Carpet Dash Cover, '78-93	\$49.95
DASH COVER BROWN	Carpet Dash Cover, '78-93	\$49.95
DASH COVER WINE	Carpet Dash Cover, '78-93	\$49.95
928 552 021	Remanufactured Leather Dash	\$895.00
DASH CORE	Dash Core	\$100.00
U928 552 021 52	Used Leather Dash, '78-89	\$500.00
U928 552 023 04	Used Vinyl Dash, '78-89	\$500.00
928 552 031	Remanufactured Dash Pod	\$625.00
U928 552 031 03	Used Dash Pod, '78-89	\$450.00
N 90 0 685 01	Clip for Carpet	\$1.00
999 507 251 02	Speed Clip for Interior Shelf	\$1.00
U928 521 002	Used Pair of Front Seats	\$500/1750.00
911 521 815 00	Seat Lever Trim	\$3.00
911 521 817 00	Seat Knob	\$2.00
928 522 321 02	Seat Belt Holder	\$2.31
928 522 415 03	Rear Seat Belt Rose	\$3.00
928 551 055 02	LF Threshold Plate with 928 logo	\$90.00
928 551 056 02	RT Threshold Plate with 928 logo	\$91.00
U928 551 081	Used Rear Tool Cover	\$100.00
928 551 221 02	Tool Kit Knob	\$12.00
U928 552 043	Used Vinyl Center Console	\$300.00
U928 552 045	Used Leather Center Console	\$500.00
U928 552 047 05	Used Center Console Trim, '80-82	\$75.00
U928 552 049 02	Used Spacer for Instruments	\$3.00
U928 552 053	Used Vinyl Glove Box Door	\$100.00
U928 552 059	Used Leather Glove Box Door	\$200.00
U928 552 060 02	Used Ash Tray	\$50.00
U928 552 074 02	Used Right Console Side	\$50.00
U928 552 135 03	Used Dash Column Cover	\$15.00
928 552 321 02	Cover Under Dash Pod	\$12.00
U928 552 321 02	Used Cover Under Dash Pod	\$5.00

928 552 362 00	Top Console Trim, '83-95 (vinyl)	\$7.50
928 552 362 50	Top Console Trim, '83-95 (leather)	\$7.50
U928 555 015	Used Vinyl Door Panel	\$250.00
U928 555 016	Used Leather Door Panel	\$400.00
U928 555 021	Used Vinyl Rear Quarter Panel	\$200.00
U928 555 022	Used Leather Rear Quarter Pane	\$500.00
U928 555 073	Used Left Windshield Post Cove	\$50.00
U928 555 074	Used Right Windshield Post Cove	\$50.00
928 555 075 05	Coin Holder, '87-95	\$50.00
928 555 275 02	Seat Belt Rose, '78-79 (left)	\$3.00
928 555 275 04	Seat Belt Rose, '80-91 (left)	\$3.00
928 555 276 02	Seat Belt Rose, '78-79 (right)	\$3.00
928 555 276 04	Seat Belt Rose, '80-92 (right)	\$3.00
U928 555 301 60	Used Sun Roof Motor Cover	\$100.00
928 555 365 03	Clip for Rear Hatch Plug	\$1.70
928 555 437 02	Clamp for Rear Interior Panel	\$2.00
U928 555 701	Used Cassette Box	\$200.00
928 555 729 03	Cassette Box Hinge	\$22.00
U928 555 901	Used Arm Rest with Map Pocket	\$125.00
928 556 045 02	Spare Tire Cover with Foam	\$146.00
999 591 559 40	Clip for Rear Hatch Panel	\$0.40
999 591 564 40	Plastic Rivet for Rear Hatch	\$0.25
999 591 796 02	Clip for Coin Holder	\$2.35
U928 624 407 02	Used Rear Hatch Motor	\$65.00
928 652 103 00	Cigarette Lighter	\$37.00
U928 652 103 00	Used Lighter	\$15.00
644 652 112 00	Lighter Elements	\$16.95
911 731 331 00	Sun Visor Clip	\$3.00
U928 803 126 09	Used Seat Belt, '78-79 ft	\$100.00
928 803 151 02	Seat Belt Clip	\$1.30
928 803 153 02	Seat Belt Clip	\$1.18
477 857 511 A	Interior Rear View Mirror	\$74.00
U477 857 511 A	Used Inside Rear View Mirror	\$30.00
311 881 247	Seat Knob Clip	\$1.00
CARPET BLACK	Carpet Kit	\$495.00
CARPET BLUE	Carpet Kit	\$495.00
CARPET BROWN	Carpet Kit	\$495.00
CARPET TAN	Carpet Kit	\$495.00

Dash Pod Overlay:
Custom made using a Factory vinyl dash as model molded hard plastic cover embossed with pebble grain texture completely covers dash.



Ash Tray



Glove Box Door



Dash



Shift Boot



Cassette Holder



Door Panel



Rear Quarter Panel



Instrument Pod



Center Console



Luggage Cover



A failed circuit board can be misdiagnosed as a bad gauge. Check the rear of the instrument panel for bad contacts. You can try using a pencil eraser to clean up copper contacts.

When installing 1990 and later clocks into earlier cars you will need to know the following wiring order:

- Top pin: Ground
- Empty
- 12v from lights
- 12v constant



Dash Circuit Board



Instrument Cluster



Oil Pressure Sending Unit



Console trim



170 MPH Speedo



Analog Clock

928 606 203 01	Oil Pressure Sender, '78-88	\$55.00
928 606 203 03	Oil Pressure Sender, '89-95	\$108.00
928 606 210 00	Impulse Sender, '78-84	\$69.00
928 606 210 01	Impulse Sender, '85-90	\$67.00
928 606 301 03	Oil Level Sender	\$228.00
U928 641 030 01	Used Fuel Level Sensor, '78-88	\$50.00
U928 641 030 02	Used Fuel Level Sensor, '89-95	\$50.00
U928 641 110 30	Used Instrument Cluster, '79-81	\$350.00
U928 641 153 00	Used Instrument Cluster, '89 AT	\$750.00
928 641 503 01	Coolant Level Sensor	\$65.00
U928 641 503 01	Used Coolant Level Sensor	\$25.00
928 641 513 00	Coolant Pressure Switch	\$83.00
U928 641 602 01	Used Central Warning Brain, '83	\$150.00
U928 641 602 05	Used Central Warning Brain, '84+	\$250.00
928 641 603 02	Lamp Bulb Control Unit, '78-83	\$232.00
U928 641 603 02	Used Lamp Bulb Unit, '78-83	\$95.00
928 641 603 04	Lamp Bulb Control Unit, '84-85	\$232.00
U928 641 603 04	Used Lamp Bulb Unit, '84-85	\$75.00
928 641 603 05	Lamp Bulb Control Unit, '86	\$195.00
U928 641 603 05	Used Lamp Bulb Unit, '86	\$95.00
U928 641 603 07	Used Lamp Bulb Unit, '87 ss 10	\$95.00
928 641 603 10	Lamp Bulb Control Unit, '87-95	\$373.00
928 641 605 00	Central Indicator, '78	\$193.00
U928 641 605 00	Used Central Indicator, '78	\$50.00
928 641 609 00	Central Indicator, '79	\$58.00
U928 641 609 00	Used Central Indicator, '79	\$25.00
928 641 609 03	Central Indicator, '80-82 with Clip	\$94.00
U928 641 609 03	Used Central Indicator, '80-82W	\$40.00
U928 641 609 05	Used Central Indicator 80-82	\$60.00
928 641 609 10	Central Indicator, '83	\$142.00
U928 641 609 10	Used Central Indicator, '83	\$40.00
928 641 609 13	Central Indicator, '83 w a/c	\$189.00
U928 641 609 13	Used Central Indicator, '83 w ac	\$60.00
928 641 609 15	Central Indicator, '84-88	\$241.00
U928 641 609 15	Used Central Indicator, '84-88	\$100.00
928 641 701 00	Analog Clock, '78-82	\$137.00
U928 641 701 00	Used Analog Clock, '78-82	\$50.00
U928 641 701 03	Used Digital Clock, '83-89	\$75.00
928 641 701 05	Analog Clock, '90-95	\$386.00
U928 641 903 00	Used 170 mph Speedometer, '78	\$150.00
928 641 951 00	Rebuilt 170 Speedo, '78-84 + core	\$353.00
U928 641 951 00	Used 170 Speedometer, '78-84	\$175.00
928 641 951 01	Rebuilt 170 Speedometer, '85-on	\$195.00
928 641 956 00	85 mph Speedometer, '79-84	\$422.00
U928 641 956 00	Used 85 mph Speedometer, '79-84	\$150.00
928 641 957 00	170 mph Speedometer, '79-84	\$456.00
U928 641 957 00	Used 170 mph Speedometer, '79-84	\$175.00
928 641 957 00R	Rebuilt 170 Speedometer, '79-84	\$195.00
928 641 957 01	170 mph Speedometer, '85-86 5sp	\$624.00
U928 641 957 01	Used 170 mph Speedometer, '85-86 5sp	\$150.00
928 641 957 02	170 mph Speedometer, '85-86 AT	\$637.00
U928 641 957 02	Used 170 mph Speedo, '85-86 AT	\$150.00
928 641 957 03	180 mph Speedometer, '87-88 AT	\$509.00
U928 641 957 03	Used 180 mph Speedo, '87-88 A/T	\$150.00
928 641 957 04	180 mph Speedometer 87 88 5sp	\$449.00
U928 641 957 04	Used 180 mph Speedo, '87-88 5sp	\$150.00
928 641 958 00	Bulb with Plate Holder	\$19.00
928 641 923 00	Printed Circuit, '78	NLA
928 641 939 00	Printed Circuit, '79-81	\$101.00
928 641 973 01	Printed Circuit, '82-84	NLA
928 641 973 02	Printed Circuit, '85-88	\$105.00
928 641 977 00	Plug for Printed Circuit	\$5.00
928 641 981 00	Resistor, Alternator Circuit	\$3.00

928 645 035 04	Power Antenna-Hirschmann non OEM	\$79.00
477 035 513	Antenna Mast, Smooth, '78-82	\$45.00
944 645 913 00	Antenna Mast, with Teeth, '83-84	\$60.00
928 645 201 00	Roof Antenna Kit	\$99.00
928 645 030 00	Manual Antenna	NLA
928 645 423 00	Small Rear Grill	\$20.00
928 555 689 00	Speaker Grill-Tweeter, '89-95	\$18.00
928 555 691 00	Speaker Grill for Mid, '89-95	\$44.00
U928 645 425 00	Used Left Rear Square Grill, '83-88	\$20.00
U928 645 426 00	Used Right Rear Grill, '83-88	\$20.00
928 645 428 00	Large Door Speaker, '83-88	\$130.00
U928 645 429 00	Used Small Speaker Grill, '83-88	\$35.00
928 645 430 00	Large Door Grill, '83-88	\$35.00
U928 645 430 00	Used Large Door Grill, '83-88	\$20.00
U928 645 435 00	Used 6 Channel Amplifier, '89-95	\$200.00
928 645 405 02	4 Channel Amplifier, '80-89	\$248.00
U928 645 405 02	Used 4 Channel Amplifier, '80-89	\$75.00
928 645 154 01	Fader Knob	\$5.00



Power Antenna



Original Stereo Components



Replacement Speakers and Mast

IF YOU DON'T SEE IT
CALL 714-632-9288

PERFORMANCE PARTS

Mark has been campaigning a lightweight street licensed '88 S4 with a 6.4 liter engine designed and developed in-house. This car features our proprietary design "stroker" crankshaft, with the block overbored to 104.5 mm using Mahle 968 pistons. The 6.4 engine has dyno tested at over 450 hp at the rear wheel.

This car has proven very competitive in wheel to wheel road racing, competing on tracks such as Laguna Seca, Willow Springs, Phoenix International, Las Vegas Speedway, Buttonwillow, Infineon at Sonoma and Road America.

On the 2.5 mile Willow Springs road course, Mark has clocked lap times of 1:24, with an average speed of over 100 mph. On the banking at the California Speedway, CA, speeds in excess of 165 mph have been attained in wheel to wheel racing, with lap times better than two new factory RSR race cars!



Autothority1	'85-86 Performance Chip Set	\$449.00	▲	MsdS	MSDS Headers, '78-84	\$595.00
Autothority2	'87-91 Performance Chip Set	\$595.00		Rmb	Rear Muffler Bypass, '87-95	\$149.00
BE	Bilstein Eibach Shock and Spring Package	\$1,245.00		Rmb Stainless	Stainless Rear Muffler Bypass, '87-95	\$185.00
BE Core	Shock Hardware Core	\$200.00		Rmb86	Rear Muffler Bypass, '86.5	\$149.00
Eibach	4 Piece Set of Eibach Springs	\$295.00		Rmb86 Stainless	Stainless Rear Muffler Bypass, '86.5	\$185.00
Carbon Fiber	Carbon Fiber Strut Brace Across Engine	\$245.00		928 355 080 ss	Stainless Brake Line Set, '78-83.5	\$119.00
GTS	GTS Brake Upgrade Kit	\$1,295.00		928 355 082 ss	Stainless Brake Line Set, '83.5-95	\$119.00
GTS Core	Core Deposit for Calipers Only	\$250.00	▼			

MSDS Headers



RMB Exhaust



RMB Exhaust with Stainless Tips



Sport Springs



Engine Strut Brace



Stainless Brake Lines



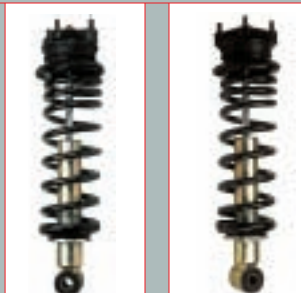
Autothority Chip Sets



GTS Brake Upgrade



Bilstein/Eibach Coil Over Package*



Oil Pan Baffle



Racing Brake Fluid



* Shown Assembled

LATEST PRODUCTS

Momo automatic shift knobs — Replaces the expensive factory knob in minutes.

\$119



A-Arm bushing — Replace your worn out front A-arm bushings with our new high density polyurethane bushings. A set of four does both upper A-arms. Available in kits for '78-86.5 and '86.5-95

\$75



Shift 1 ['78-84] — This new short shift lever not only lowers the top of the shift lever as in later model cars, but it also changes the shift geometry to reduce the length of throws and provide a much tighter shift pattern.

Shift 2 ['85-95] — Giving your '85-95 the feel of the Club Sport

\$85



Radiator end tank — Replacement end tank and seal for your factory Behr radiator.

\$95



Brake Caliper Adapter — This adapter allows you to bolt S4 or GTS Calipers on your '78-81 928. It does require the use of Porsche 993 rotors and you must have steel ball joints.

\$195



\$279

Aluminum Under Tray ['87-95] — This great new product is a near replica of the fragile plastic factory part. It uses all the factory mounting points and protects your engine from road debris as well as maintaining the terrific aerodynamics your car was delivered with.



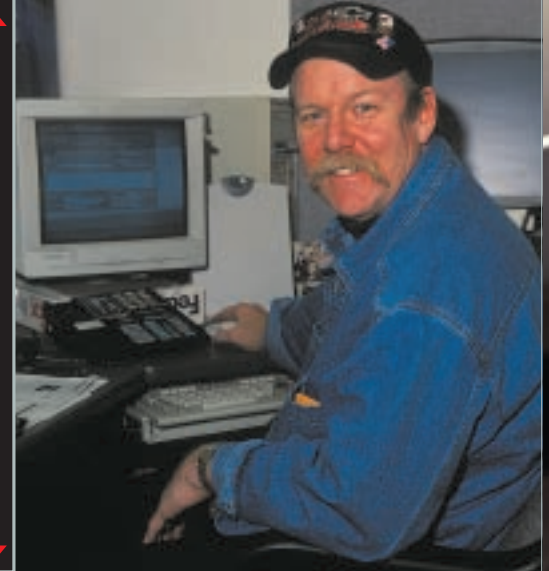
JIM BAILEY

"I wanted to let you know that working with you guys and all your support teams has been phenomenal and that is why I will continue to forever work with you guys and make you my only source for my 928 needs. Thanks and Happy Motoring."

Greg Hurley

"I just wanted to take a moment to thank you for the help your company has given me in putting my car back together. It was a mess when I got it. Tom has sold me the parts I needed and advised not to just throw parts at problems. Must say that is rare usually they want to sell more than you need. You have a great thing going and I am a customer for ever. Thanks."

Joe



TOM REICHENBERG

"Just a quick note of thanks for sending the parts on the LSD last Friday. Thanks for standing by your customers. This makes me more loyal than ever to 928 International. Good luck on the track too! Thanks."

D.W.

"This note is to thank you sooooo much for rushing in the injectors for my 928 last week. They arrived promptly, got installed and I was able to enjoy cruising in the shark on Christmas day to and from some great holiday stops. I cannot thank you enough for not only saving me money on the parts compared to the Porsche dealer here but your unsurpassed customer service and attention to detail. Please know that I will be telling all 928 owners that I know and meet to first check with you guys for anything that they need prior to going to the dealer service department. Your work with 928 owners is spectacular and has a powerful spokesperson from here forward in myself. Thanks again and Happy New Year and may 928's Always Rule!"

Phil C. Robinson

"Thanks for all your assistance. I really enjoy doing business with 928, you guys are the consummate professionals, always answering my e-mails, and my requests in a very timely manner. Thanks a lot."

B.R.

"Hello Landsharks. I have just had an amazing experience last Thursday. I ordered some miscellaneous parts from 928 International (new) It arrived yesterday (Monday) via FedEx. I am absolutely shocked and cannot recommend them more highly. Well done, 928 International!"

Leonard Zech

"I went home for lunch and there on my porch was the replacement pump. Dealing with you guys is simply the best. I am trying to talk all my Porsche and BWM friends into buying 928's, just so they can buy parts from your company and experience what real customer service is all about. I may even need another car after this one is done. Thanks again."

Richard Andrews

"Just wanted to comment on how quickly I got a needed part from 928 International in California all the way to Lyle, Washington. It is really pretty amazing. Yesterday afternoon, I went into Portland, Oregon to check on car's progress. They pointed out a broken front shock mount that they noticed while the fenders are off. Anyways, I start home for Lyle-Land and call Jim Bailey at 928 Int. on my cell phone at like 4:30. He says he can ship one right off (my car needs to be moving on Monday) and this morning at 8:30, here comes the FedEx van, way out here in Lyle Land, with a used shock mount for my GT. Think about that for a minute—incredible, huh? Thanks, everybody, for doing your jobs very well indeed!"

Don Hanson



MARK ANDERSON

"Just wanted to let you know why I continue to buy 928 parts from you and only you. I choose to use only 928 International because you have made it very convenient for me to ask questions, give advice and offer very personalized service. I could describe a part to you and within hours, I have not only the part number but the prices. Its because of this Tom that I will only use you exclusively to keep my 928 running like a well oiled machine. I know that if I ever need help or need to return a part that I bought that was defective, that you will stand behind what you sell and that I can count on you. Please pass this on to your co-workers also. Thanks."

Paul Laya



928 INTERNATIONAL STAFF

PRESORTED STD
US POSTAGE
PAID
JART

